

SèçÈÖ:|ã
Oè Á-æ|ã&^!ÁF
FGGEJÁÖ:|ã
Q | KÈI JÁÈÁ I ÁÈÁ ÈÇG
Qæ|KÈI JÁÈÁ I ÁÈÁ ÈÇF
T æ|KÈI JÁÈÁ I ÁÈÁ ÈÇG
Qç|)^çÁ , , ÈæçÈÈÁ|ã Èç {

No.	E2AH-2401
ISSUED:	APR. 06, 2001
REVISED:	MAY. 24, 2011
SERVICE INFORMATION	: ---



HOSHIZAKI MODULAR FLAKER

MODEL **FM-481AGE**
FM-481AGE-N

PARTS LIST (HE, GENERAL)

A-1	APR. 2001
B-0	DEC. 2001
B-1	JUN. 2002
B-2	AUG. 2002
C-0	DEC. 2002
D-0	FEB. 2004
E-0	JAN. 2005
F-0	DEC. 2005
F-1	APR. 2006
G-0	JAN. 2007
G-1	SEP. 2007
K-1	MAY. 2010

AUXILIARY CODE

U - 1

The auxiliary code is the first two characters in the serial number. The first character indicates the production year. Years progress or regress in alphabetical order. The series of letters and skipped letters depend on UL listing, production, and model. See the auxiliary code(s) and corresponding year(s) on the front cover.

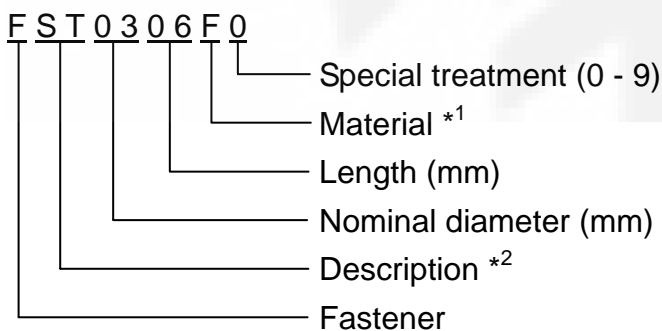
The second character indicates significant part changes within the same year. Base is "1" and this number advances for each change. If there is no significant part change at the turn of the year, this number starts from "0."

MARKS LOCATED UNDER THE AUXILIARY CODE

- = Part deleted.
- x = Part deleted and replaced by "o" part.
- o = New part in place of "x" part.

FASTENER PART NUMBER

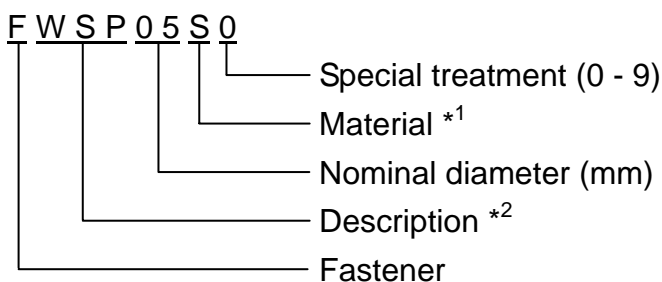
SCREWS



*1 **Material**

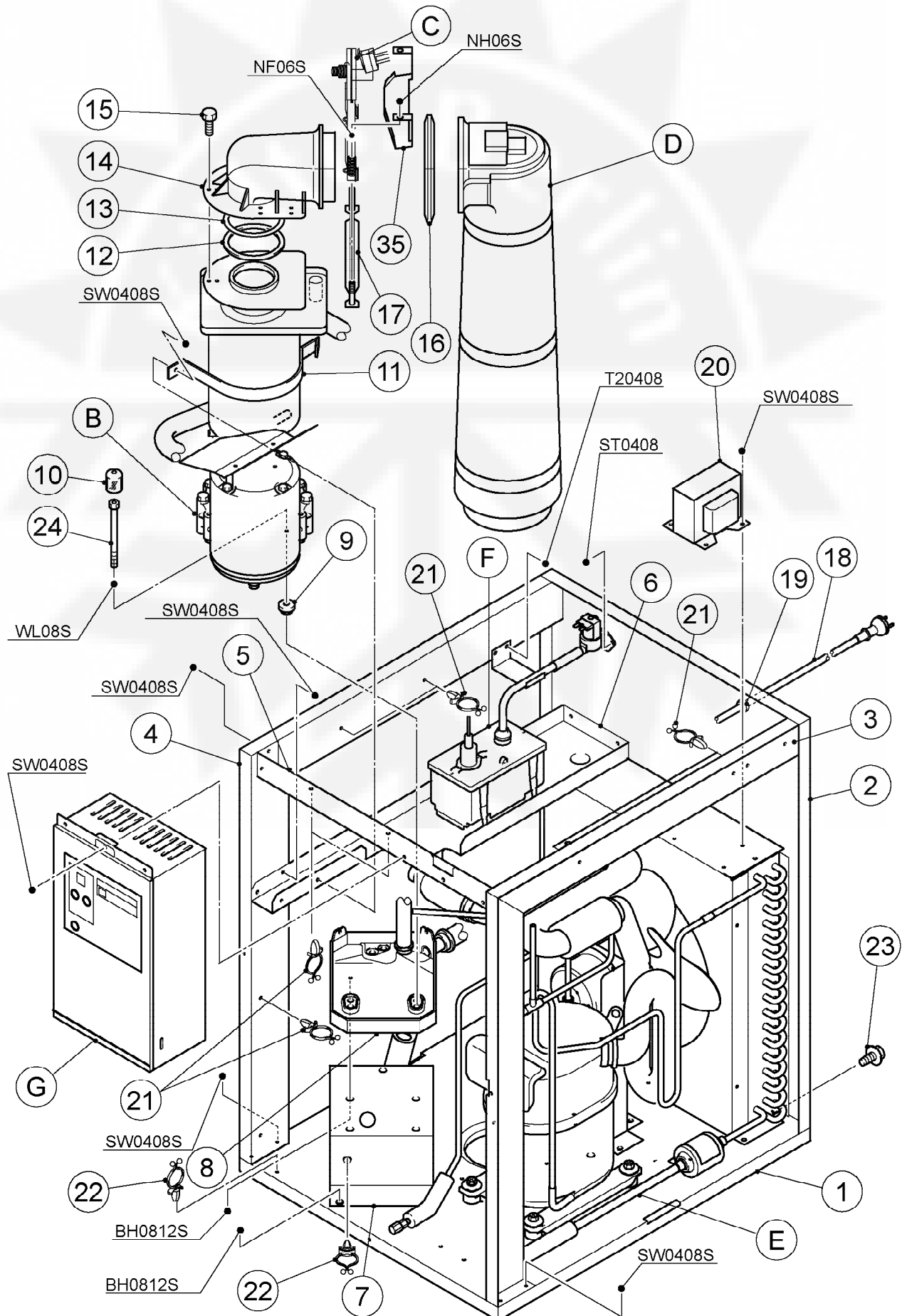
- F: Steel
- S: Austenitic stainless steel
- M: Martensitic stainless steel
- B: Copper alloy
- P: Polycarbonate
- N: Polyamide
- V: PVC
- A: ABS
- X: Polyacetal
- L: Aluminum

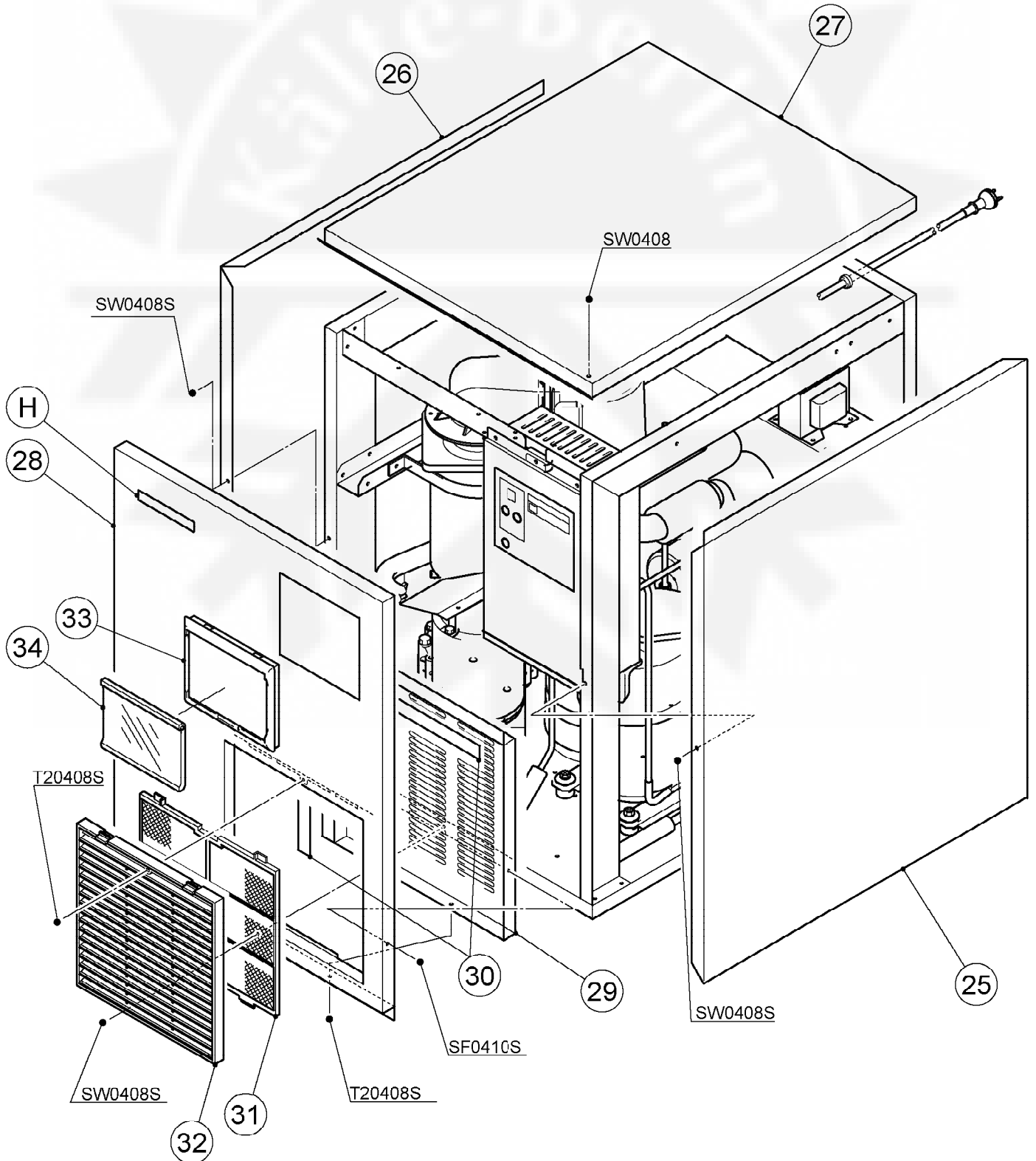
NUTS & WASHERS

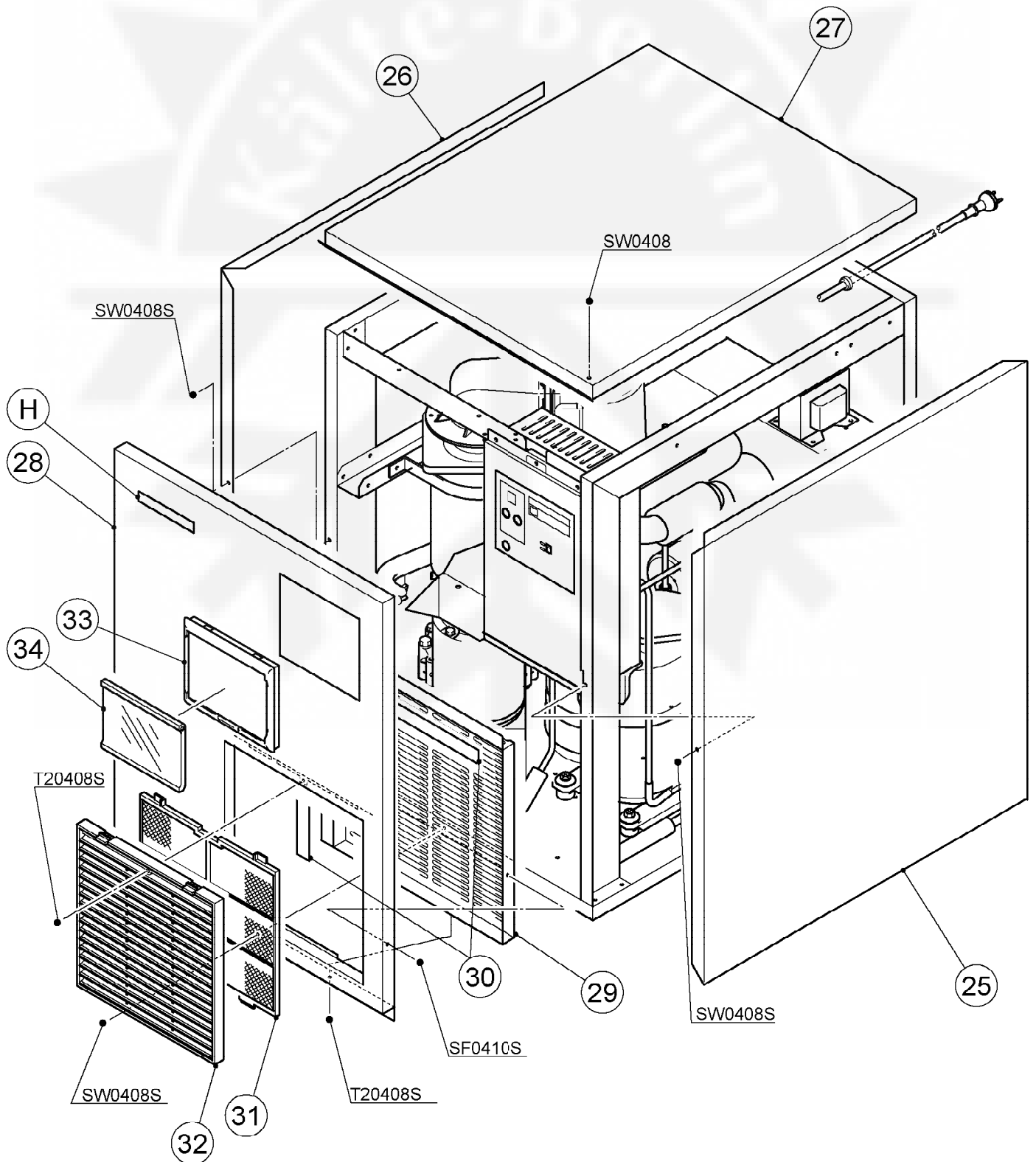


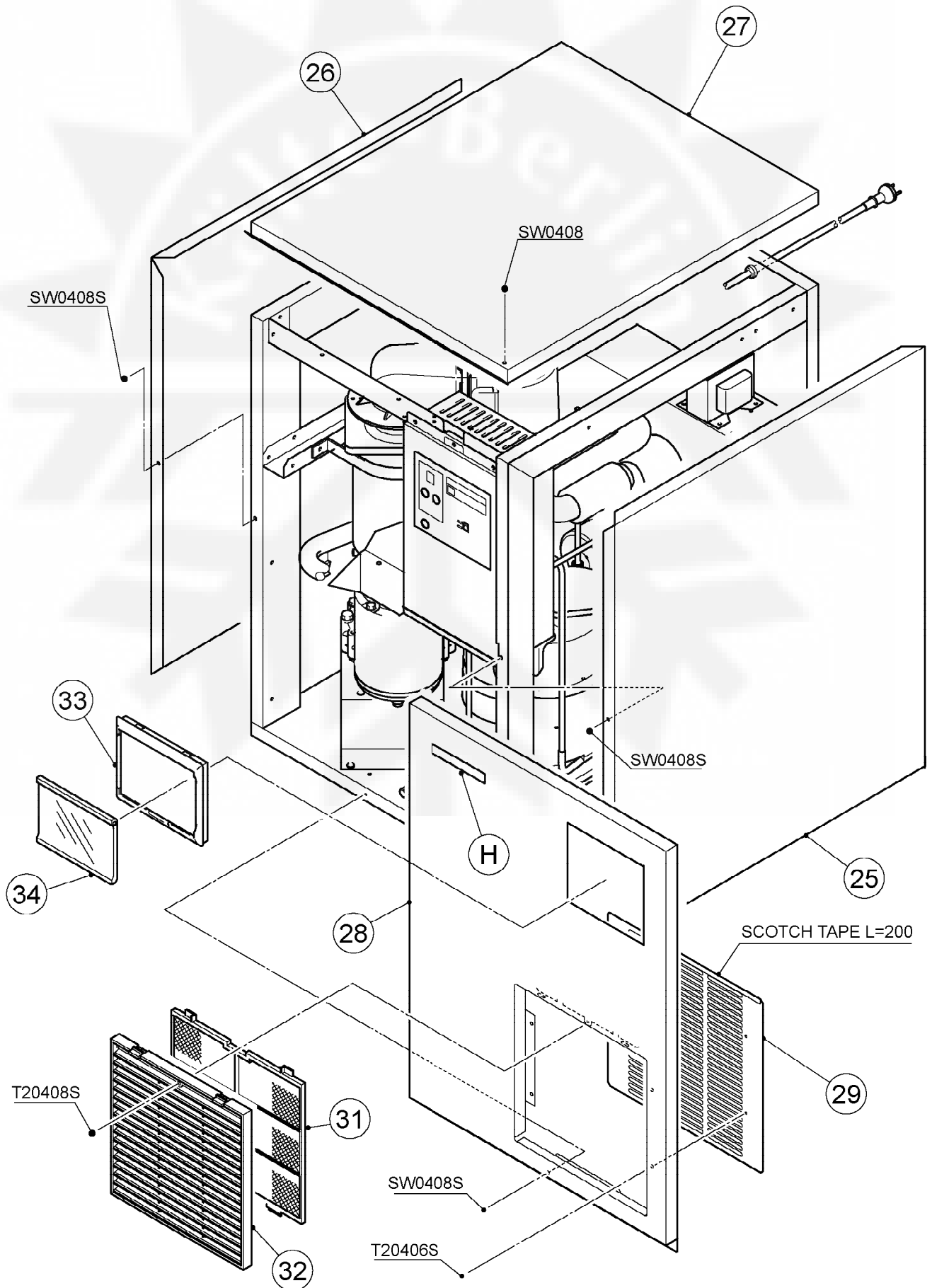
*2 **Description**

- First letter
- S: Machine screw
- T: Tapping screw
- M: Wood screw
- B: Bolt
- W: Washer
- N: Nut









GENERAL EXPORT
HE

MODEL: FM-481AGE, FM-481AGE-N			TITLE: A. ICE FLAKER ASSY				
INDEX NO.	DESCRIPTION	MATERIAL OR MODEL NUMBER	PART NUMBER	REQ'D NUMBER			
				A-1 B-0	B-1	B-2	C-0 D-0
B	ICE MAKING UNIT	(FM-481AGE)	347939A01	1	-		
			352193A02		1	1	1
	ICE MAKING UNIT	(FM-481AGE-N)	-	1	1	1	1
C	BAND (A) ASSY	(S-9165)	348911A01	1	1	1	1
D	CHUTE ASSY	(S-9163)	111514A01	1	1	-	
			113006A01			1	1
E	REFRIGERATION UNIT		111018A01	1	-		
			111018A02		1	1	1
F	WATER CIRCUIT		110988A01	1	1	1	1
G	CONTROL BOX ASSY		234310A01	1	-		
			237456A01		1	-	
			237456A03			1	1
		GENERAL EXPORT (50Hz)	238173A01		1	1	1
		GENERAL EXPORT (60Hz)	238173A03		1	1	1
H	LABEL LOCATION		234309A01	1	-		
			234309A03		1	1	1
		GENERAL EXPORT (50Hz)	238218A01		1	1	1
		GENERAL EXPORT (60Hz)	238218A03		1	1	1

GENERAL EXPORT
HE

MODEL: FM-481AGE, FM-481AGE-N				TITLE: A. ICE FLAKER ASSY			
INDEX NO.	DESCRIPTION	MATERIAL OR MODEL NUMBER	PART NUMBER	REQ'D NUMBER			
				E-0 F-0	F-1 G-0	G-1 K-0	K-1
B	ICE MAKING UNIT	(FM-481AGE)	352193A02	1	-		
			358782A02		1	1	1
	ICE MAKING UNIT	(FM-481AGE-N)	-	1	-		
			-		1	1	1
C	BAND (A) ASSY	(S-9165)	348911A01	1	1	1	1
D	CHUTE ASSY		113006A01	1	1	1	1
E	REFRIGERATION UNIT		111018A02	1	-		
			111018A03		1	-	
			111018A04			1	1
F	WATER CIRCUIT		110988A01	1	x 1		
			117694A01		o1	1	1
G	CONTROL BOX ASSY		237456A03	1	-		
			247943A01		x 1		
			247943A08		o1	-	
			247943A09			1	1
		GENERAL EXPORT (50Hz)	238173A01	1	-		
		GENERAL EXPORT (60Hz)	238173A03	1	-		
			247943A06		x 1		
			247943A13		o1	-	
			247943A15			1	1
		H	LABEL LOCATION		234309A03	1	-
234309A05					1	-	
234309A07						1	1
GENERAL EXPORT (50Hz)	238218A01			1	-		
GENERAL EXPORT (60Hz)	238218A03			1	-		
	234309A05				1	-	
	234309A07					1	1

GENERAL EXPORT
HE

MODEL: FM-481AGE, FM-481AGE-N			TITLE: A. ICE FLAKER ASSY				
INDEX NO.	DESCRIPTION	MATERIAL OR MODEL NUMBER	PART NUMBER	REQ'D NUMBER			
				A-1 B-0	B-1	B-2	C-0 D-0
1	BOTTOM PANEL		234101G01	1	1	1	1
2	REAR PANEL		234104-01	1	1	1	1
3	SIDE FRAME (R)		234105-01	1	1	1	1
4	SIDE FRAME (L)		234106-01	1	1	1	1
5	FRONT FRAME		347885-01	1	1	1	1
6	BRACKET - RESERVOIR		110986-01	1	1	1	1
7	BRACKET - GEAR MOTOR		347887G01	1	1	1	1
8	DRAIN PAN		323765G02	1	1	1	1
9	SEAL WASHER		458299-01	3	3	3	3
10	VINYL CAP		451272-01	3	3	3	3
11	STRAP		459713-01	1	1	1	1
12	RING		432661-02	1	1	1	1
13	"O" RING	G70	7616-G070	1	1	1	1
14	SPOUT		104797-01	1	1	1	1
15	THUMBSCREW		415949G04	5	5	3	3
16	PACKING		454256-01	1	1	1	1
17	BAND (B)		459995G01	1	1	1	1
18	POWER SUPPLY CORD		452265-01	1	1	1	1
19	BUSHING	CEE SR-6P30	450414-01	1	1	1	1
20	TRANSFORMER	TR9544, 200VA	459865-01	1	1	1	1

GENERAL EXPORT
HE

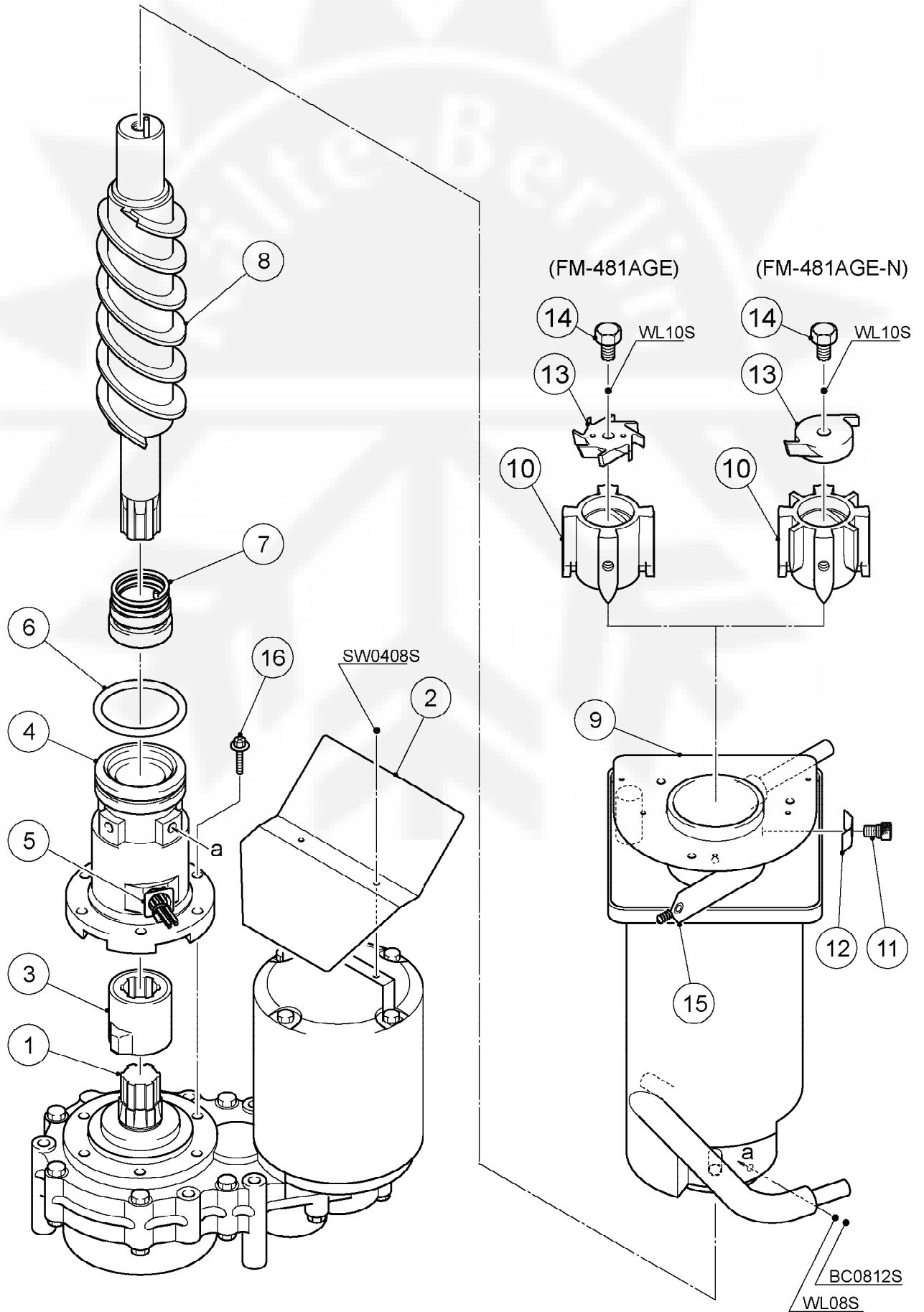
MODEL: FM-481AGE, FM-481AGE-N				TITLE: A. ICE FLAKER ASSY			
INDEX NO.	DESCRIPTION	MATERIAL OR MODEL NUMBER	PART NUMBER	REQ'D NUMBER			
				E-0 F-0	F-1 G-0	G-1 K-0	K-1
1	BOTTOM PANEL		234101G01	1	1	1	1
2	REAR PANEL		234104-01	1	-		
			250974-01		1	1	1
3	SIDE FRAME (R)		234105-01	-			
			115895-01	1	-		
			116720-01		1	1	1
4	SIDE FRAME (L)		234106-01	-			
			115894-01	1	-		
			115584-01		1	1	1
5	FRONT FRAME		347885-01	1	-		
			365628-01		1	1	1
6	BRACKET - RESERVOIR		110986-01	1	-		
			117696-01		1	1	1
7	BRACKET - GEAR MOTOR		347887G01	1	-		
			347887G02		1	1	1
8	DRAIN PAN		323765G02	1	1	1	1
9	SEAL WASHER		458299-01	3	3	3	3
10	VINYL CAP		451272-01	1	1	1	1
11	STRAP		459713-01	1	1	1	1
12	RING		432661-02	1	1	1	1
13	"O" RING	G70	7616-G070	1	1	1	1
14	SPOUT		104797-01	1	1	1	1
15	THUMBSCREW		415949G04	3	3	3	3
16	PACKING		454256-01	1	1	1	1
17	BAND (B)		459995G01	1	1	1	1
18	POWER SUPPLY CORD		452265-01	1	1	1	1
		KOREA 60Hz	452264-01				1
19	BUSHING	CEE SR-6P30	450414-01	1	1	1	1
20	TRANSFORMER	TR9544, 200VA	459865-01	1	-		
		40377E	469405-01		1	1	1

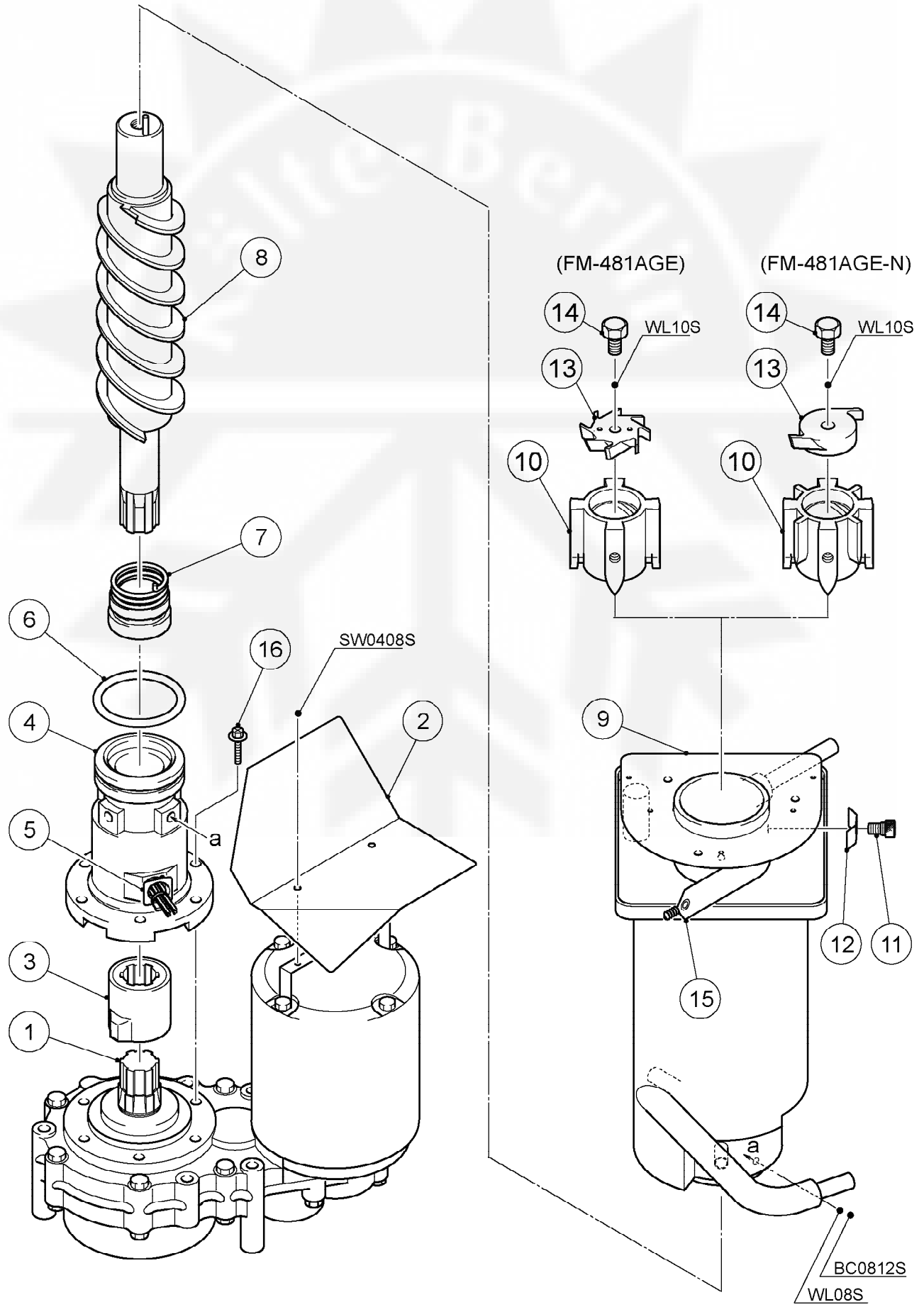
GENERAL EXPORT
HE

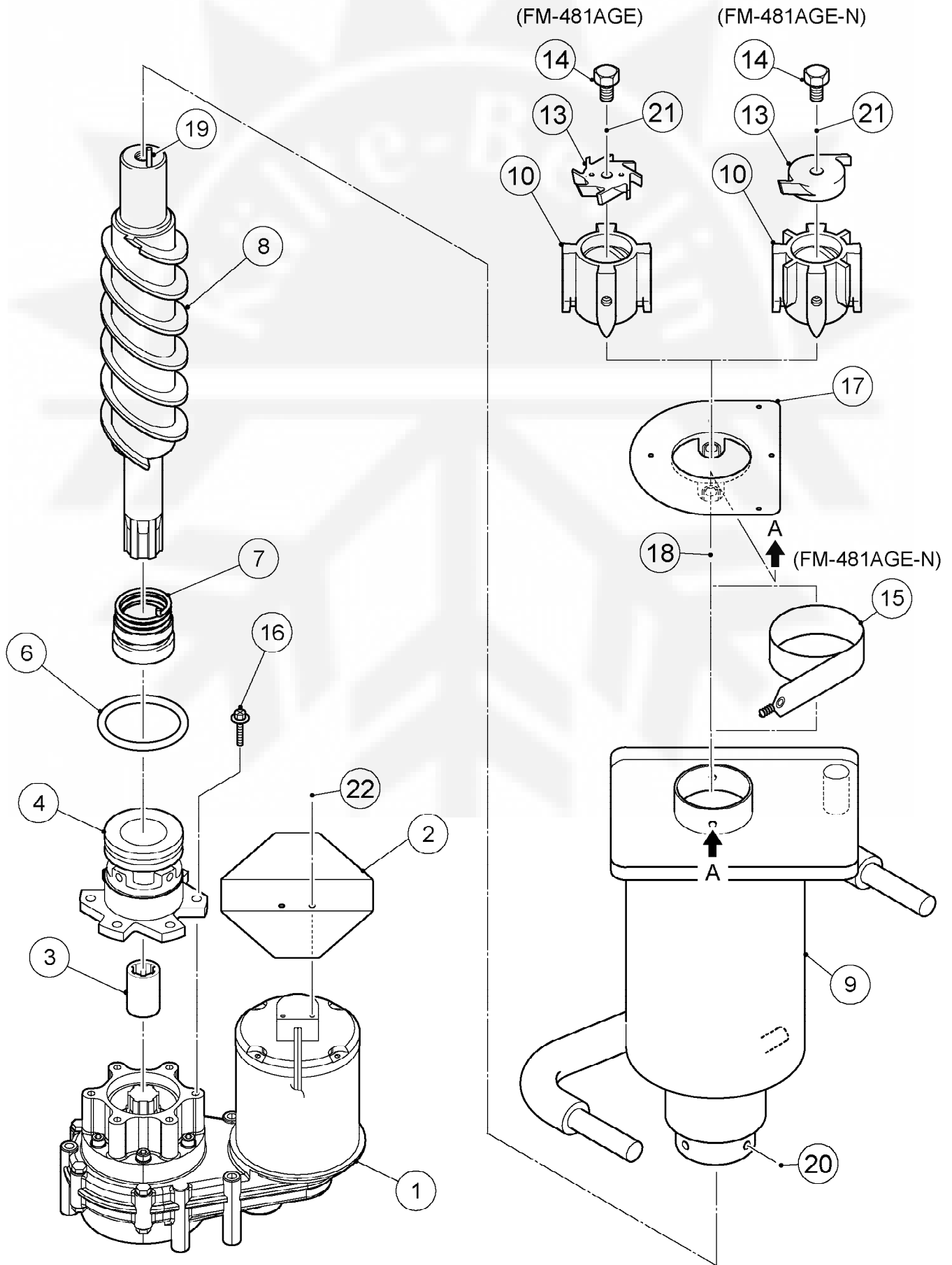
MODEL: FM-481AGE, FM-481AGE-N				TITLE: A. ICE FLAKER ASSY			
INDEX NO.	DESCRIPTION	MATERIAL OR MODEL NUMBER	PART NUMBER	REQ'D NUMBER			
				A-1 B-0	B-1	B-2	C-0 D-0
21	CLAMP	No. 249	427902-03	9	9	9	9
22	CLAMP	No. 1F55	427902-07	4	4	4	4
23	SCREW		454353-01	2	2	2	2
24	HEX. SOCKET HEAD CAP SCREW		461285-01	3	3	3	3
25	SIDE PANEL (R)		234109G01	1	1	1	1
26	SIDE PANEL (L)		234110G01	1	1	1	1
27	TOP PANEL		234189-01	1	1	1	1
28	FRONT PANEL		110987-01	1	1	-	
			113007-01			1	1
29	SUPPORTER		234112-01	1	1	-	
			238563-01			1	1
30	SEAL TAPE	#4123 W10 L=340	234111-03	2	2	-	
31	AIR FILTER (B)		208283G04	1	1	1	1
32	LOUVER (B)		103121-05	1	1	1	1
33	WINDOW FRAME		232648-01	1	1	1	1
34	WINDOW PANEL		232649-01	x1			
			232649-03	o1	1	1	1
35	DRIP GUIDE		350725-01	1	1	1	1

GENERAL EXPORT
HE

MODEL: FM-481AGE, FM-481AGE-N				TITLE: A. ICE FLAKER ASSY			
INDEX NO.	DESCRIPTION	MATERIAL OR MODEL NUMBER	PART NUMBER	REQ'D NUMBER			
				E-0 F-0	F-1 G-0	G-1 K-0	K-1
21	CLAMP	No. 249	427902-03	9	9	9	9
22	CLAMP	No. 1F55	427902-07	4	4	4	4
23	SCREW		454353-01	2	2	2	2
24	HEX. SOCKET HEAD CAP SCREW		461285-01	3	3	3	3
25	SIDE PANEL (R)		234109G01	1	1	1	1
26	SIDE PANEL (L)		234110G01	1	1	1	1
27	TOP PANEL		234189-01	1	1	x 1	
			241736-01			o 1	1
28	FRONT PANEL		113007-01	-			
			246452G01	1	1	1	1
29	SUPPORTER		238563-01	-			
30							
31	AIR FILTER (B)		208283G04	-			
	AIR FILTER (A)		2A2062G01	1	1	1	1
32	LOUVER (B)		103121-05	-			
33	WINDOW FRAME		232648-01	1	1	1	1
34	WINDOW PANEL		232649-03	1	1	1	1
35	DRIP GUIDE		350725-01	1	1	1	1





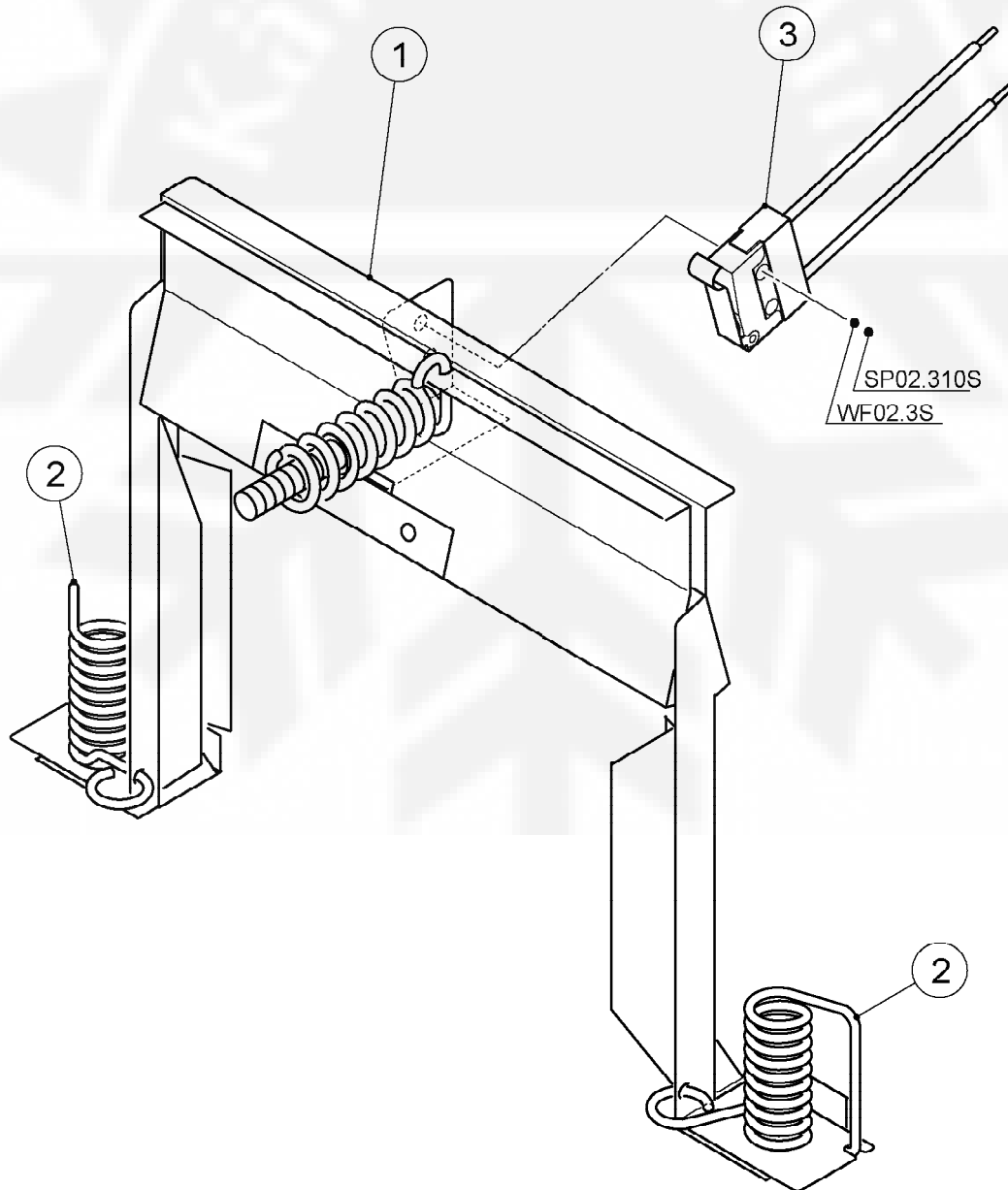


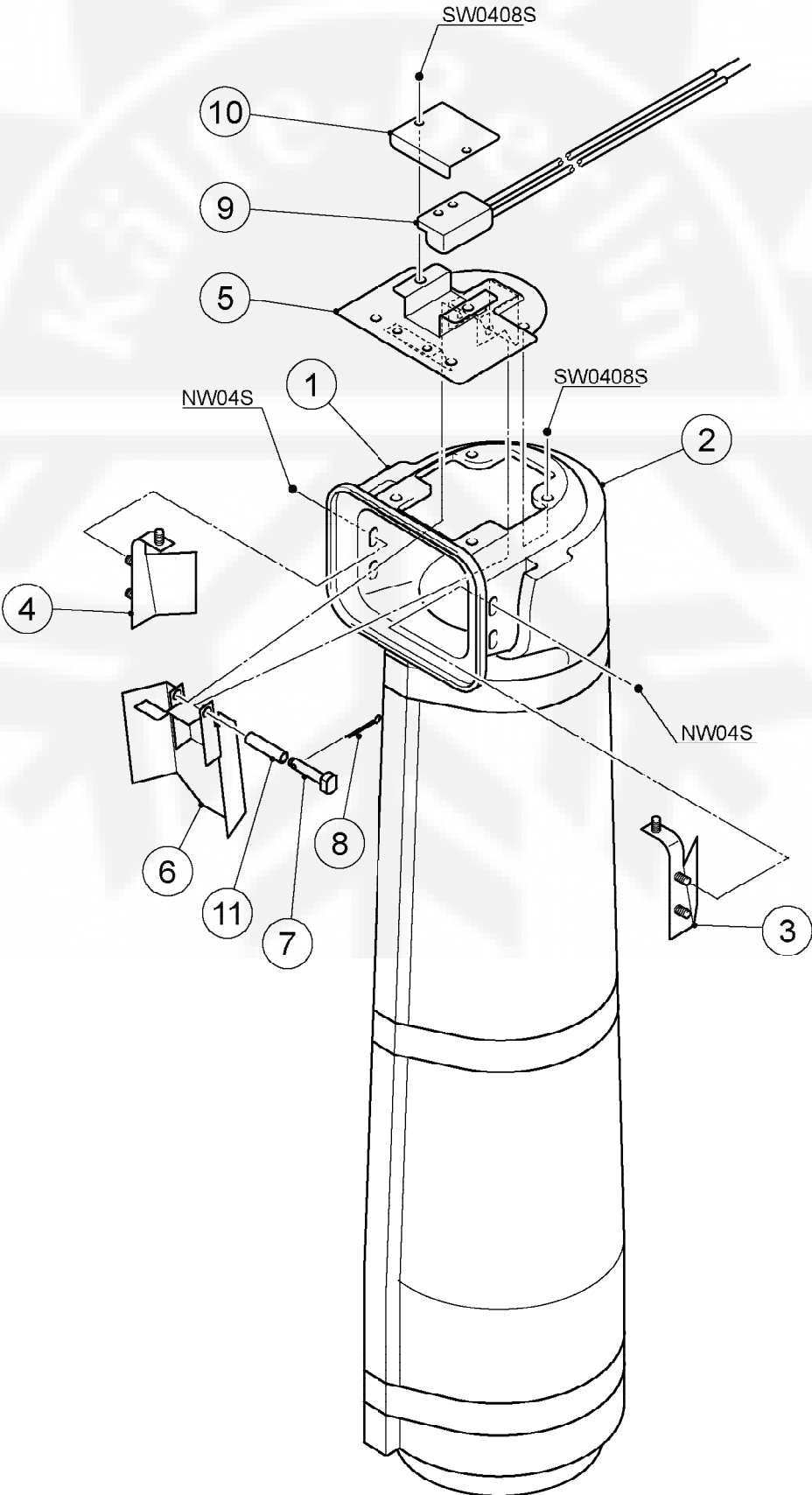
GENERAL EXPORT
HE

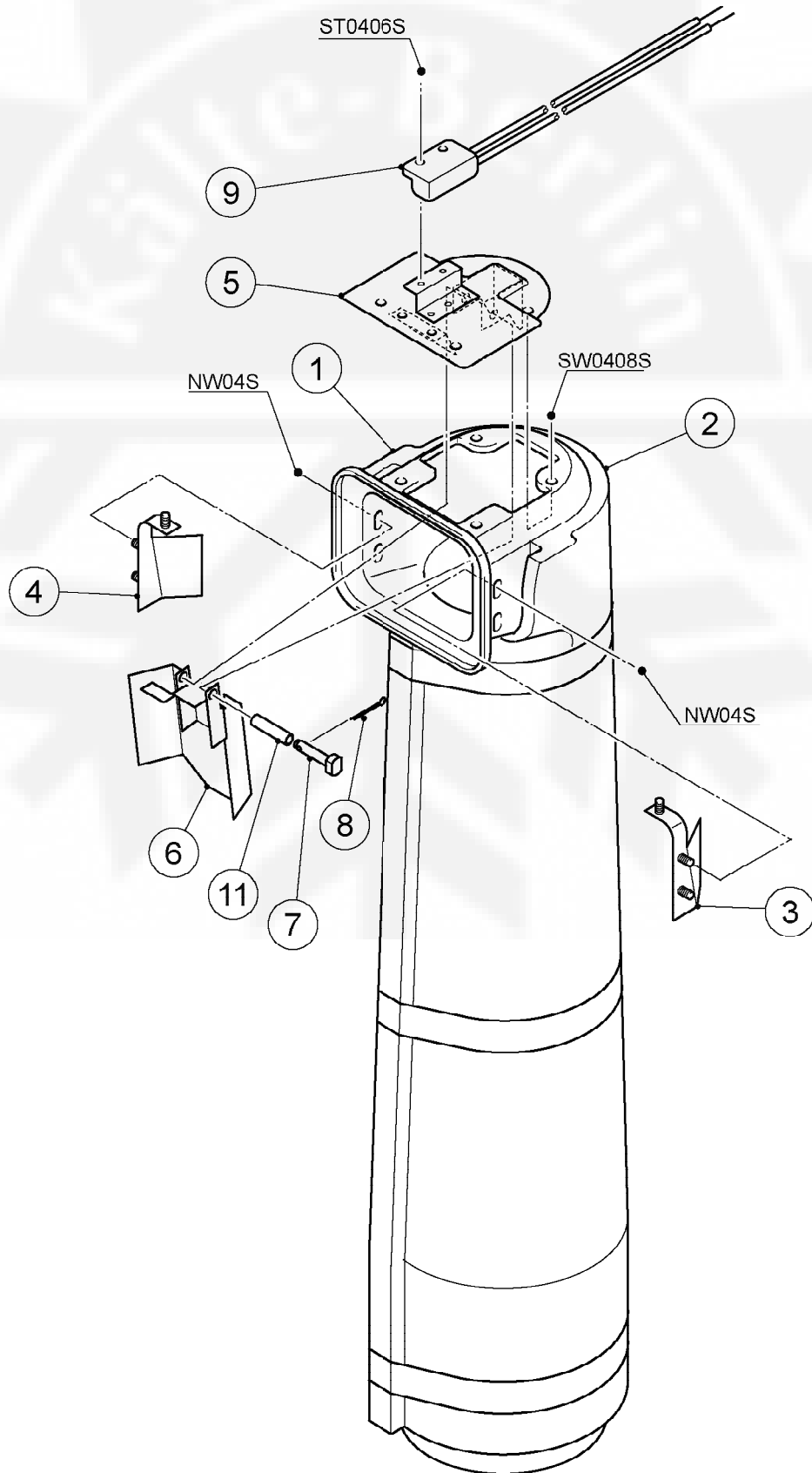
MODEL: FM-481AGE, FM-481AGE-N				TITLE: B. ICE MAKING UNIT			
INDEX NO.	DESCRIPTION	MATERIAL OR MODEL NUMBER	PART NUMBER	REQ'D NUMBER			
				A-1 B-0	B-1	B-2	C-0 D-0
1	GEAR MOTOR	MGZ2200U-150E 200W	459860-01	x1			
			461875-01	o1	-		
			461875-02		1	1	1
2	COVER - GEAR MOTOR		347889-01	1	-		
			352192-01		1	1	1
3	COUPLING - SPLINE ASSY		459851G01	1	1	1	1
4	HOUSING		111034G01	1	1	1	1
5	ROTATION SENSOR		459861-01	1	1	1	1
6	"O" RING	G65	7616-G065	1	1	1	1
7	MECHANICAL SEAL	HK9A-MIN	432492-01	1	1	1	1
8	AUGER		235387G01	1	1	1	1
9	EVAPORATOR		228167G01	1	1	1	1
10	EXTRUDING HEAD - 70F	(FM-481AGE)	327097G02	1	1	1	1
	EXTRUDING HEAD - 70N	(FM-481AGE-N)	216531G02	1	1	1	1
11	SOCKET HEAD CAP SCREW	S.S, 8x14	429121-01	4	4	4	4
12	WASHER		427184-01	4	4	4	4
13	CUTTER	(FM-481AGE)	317071-02	1	1	1	1
	CUTTER	(FM-481AGE-N)	327145-01	1	1	1	1
14	SCREW - M10	S.S, 10x30	458101-01	1	1	1	1
15	BELT HEATER / 70	RC1214	459862-01	1	1	1	1
		100V 36W					
16	HEX. HEAD BOLT W / WASHER (SW)	S.S, 8x25	461888-01	6	-		
		S.S, 8x30	461888-02		6	6	6

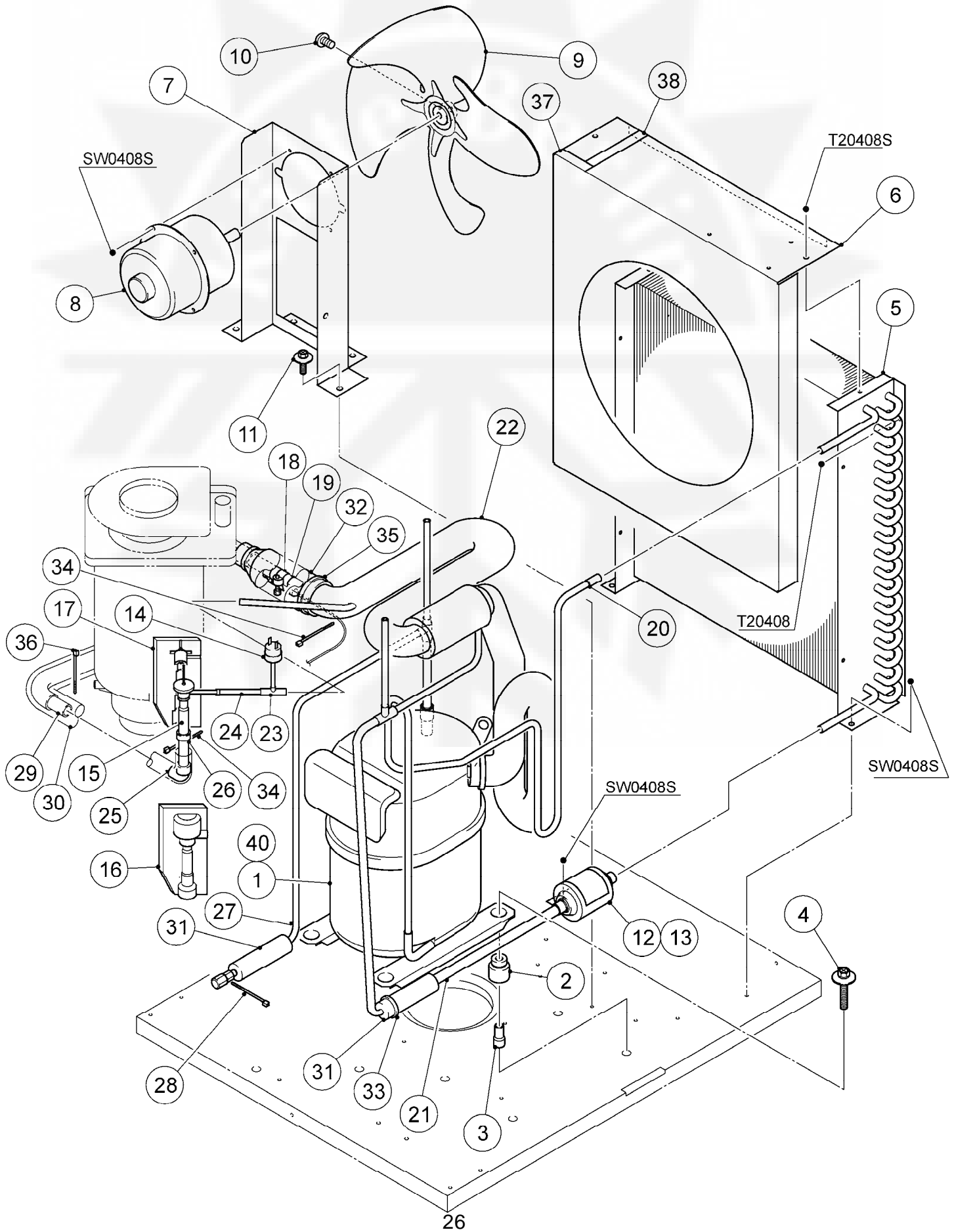
GENERAL EXPORT
HE

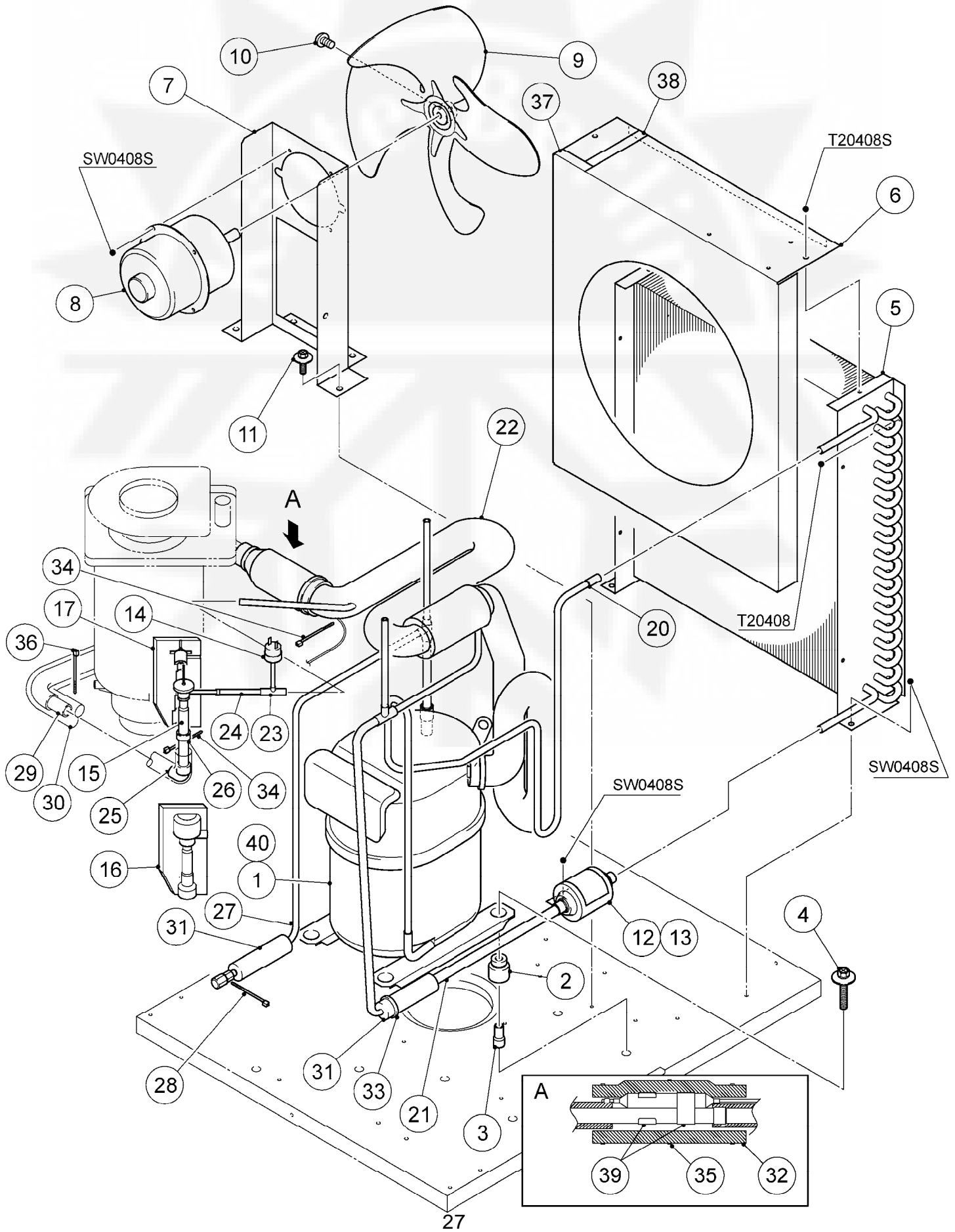
MODEL: FM-481AGE, FM-481AGE-N				TITLE: B. ICE MAKING UNIT				
INDEX NO.	DESCRIPTION	MATERIAL OR MODEL NUMBER		PART NUMBER	REQ'D NUMBER			
					E-0 F-0	F-1 G-0	G-1 K-0	K-1
1	GEAR MOTOR	MGZ2200U-150E 200W		461875-02	1	-		
		MGZ3200U-150E 200W		466223-01		1	1	1
2	COVER - GEAR MOTOR			352192-01	1	-		
				466374-01		1	1	1
3	COUPLING - SPLINE ASSY			459851G01	1	-		
	COUPLING - SPLINE			414137-01		1	1	1
4	HOUSING			111034G01	1	-		
				206657G02		1	1	1
5	ROTATION SENSOR			459861-01	1	-		
6	"O" RING	G65		7616-G065	1	1	1	1
7	MECHANICAL SEAL	HK9A-MIN		432492-01	1	1	1	1
8	AUGER			235387G01	1	-		
				120863G02		1	1	1
9	EVAPORATOR			228167G01	1	-		
				239922G02		1	1	1
10	EXTRUDING HEAD - 70F	(FM-481AGE)		327097G02	1	-		
				327097G03		1	1	1
	EXTRUDING HEAD - 70N	(FM-481AGE-N)		216531G02	1	1	1	1
11	SEALBOLT-M8			P01768-01	4	-		
12	WASHER			427184-01	4	-		
13	CUTTER	(FM-481AGE)		317071-02	1	1	1	1
	CUTTER	(FM-481AGE-N)		327145-01	1	1	1	1
14	SCREW - M10	S.S, 10x30		458101-01	1	1	1	1
15	BELT HEATER / 70	RC121	(FM-481AGE)	459862-01	1	-		
		4						
		100V	(FM-481AGE-N)	459862-01	1	-		
		36W						
RC141	(FM-481AGE-N)	469322-01			1	1	1	
7								
100V								
36W								











GENERAL EXPORT
HE

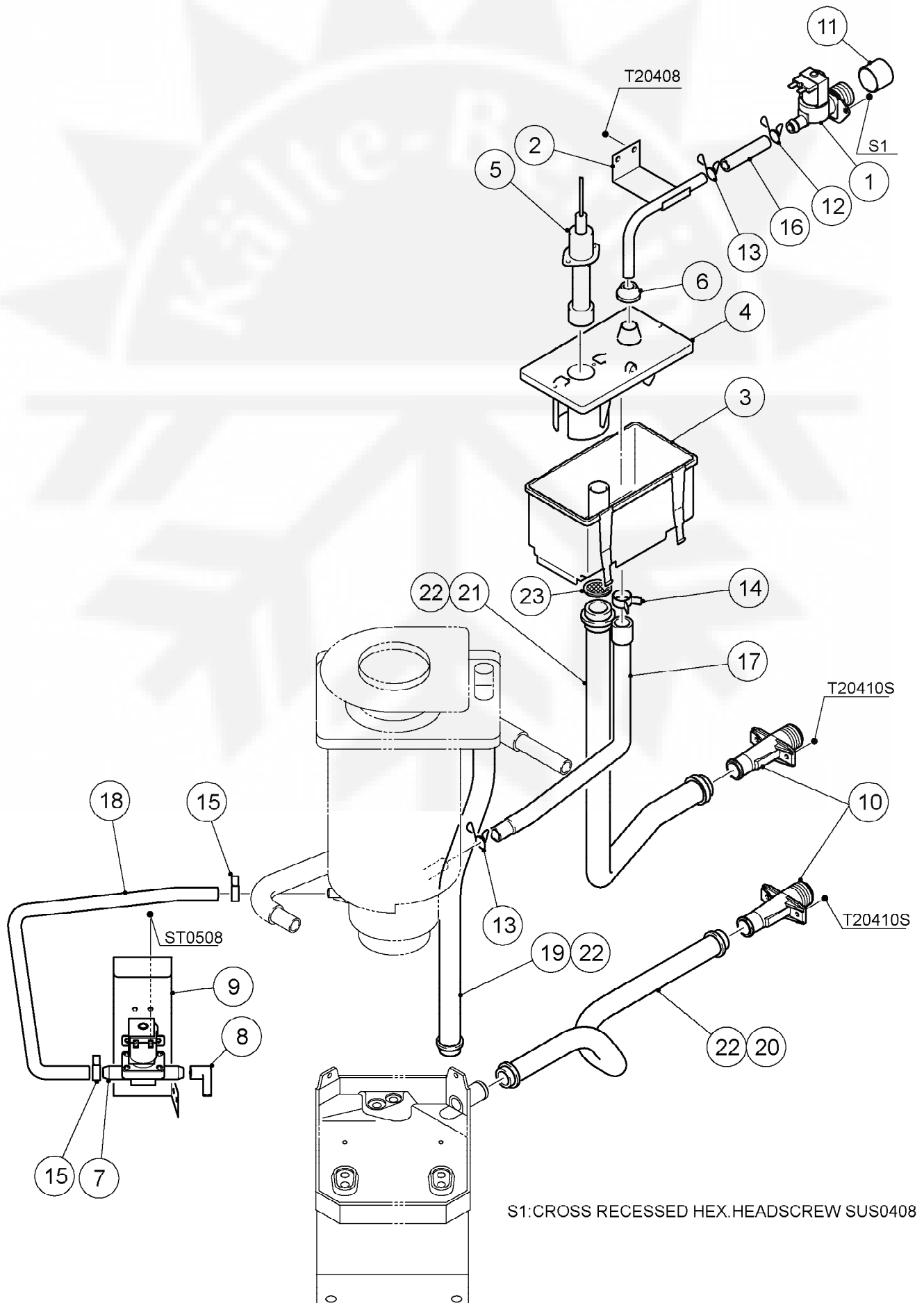
MODEL: FM-481AGE, FM-481AGE-N		TITLE: E. REFRIGERATION UNIT					
INDEX NO.	DESCRIPTION	MATERIAL OR MODEL NUMBER	PART NUMBER	REQ'D NUMBER			
				A-1 B-0	B-1	B-2	C-0 D-0
1	COMPRESSOR	RS80C2E-CAZ-219	4A1581-01	1	1	1	1
		GENERAL EXPORT (60Hz) RS70C1E-PFV-214	4A1322-01		1	1	1
2	GROMMET	027-0167-01	434922-02	4	4	4	4
3	SPACER	028-0188-02	434921-01	4	4	4	4
4	BOLT	8x50	436206-01	4	4	4	4
5	CONDENSER - AIR COOLED		234113-01	1	1	1	1
6	SHROUD		234114-01	1	1	1	1
7	BRACKET - FAN MOTOR		347909-01	1	1	1	1
8	FAN MOTOR	H564P30HZ	2U0090-01	1	1	1	1
9	FAN BLADE	FW-30PHL	417068-01	1	1	1	1
10	SCREW - FAN MOTOR		417068F01	1	1	1	1
11	SCREW	S.S, 5x12	454353-01	4	4	4	4
12	DRIER	DU032.5S	452695-01	1	-		
		DML 032.5S	462965-01		1	1	1
13	DRIER BRACKET		451830-01	1	-		
			463011-01		1	1	1
14	PRESSURE SWITCH		459864-03	1	1	1	1
15	EXPANSION VALVE	HFE-10NHD-1	453008-01	1	1	1	1
16	COVER (A) - EXPANSION VALVE		324313-01	1	1	1	1
17	COVER (B) - EXPANSION VALVE		324313-02	1	1	1	1
18	CLAMP		443461-01	1	1	-	
19	HOLDER / EXP.V-1/2		3A0112-01	1	1	-	
20	COPPER TUBE (A) - HIGH SIDE		349013-01	1	1	1	1
21	COPPER TUBE (B) - HIGH SIDE		348317G01	1	1	1	1
22	HEAT EXCHANGER		236520G01	1	1	1	1
23	TEE	6.35 DIA	417394-01	1	1	1	1
24	COPPER TUBE (D) - HIGH SIDE	6.35 DIA , t0.8 L=80	111018-25	1	1	1	1
25	ELBOW	12.7 DIA	417395-03	1	1	1	1
26	COPPER TUBE (B) - LOW SIDE		460005-01	1	1	1	1
27	COPPER TUBE - ACCESS VALVE		348318G01	1	1	1	1
28	PUSH MOUNT TIE	T30RSF	436156-01	1	1	1	1

GENERAL EXPORT
HE

MODEL: FM-481AGE, FM-481AGE-N		TITLE: E. REFRIGERATION UNIT					
INDEX NO.	DESCRIPTION	MATERIAL OR MODEL NUMBER	PART NUMBER	REQ'D NUMBER			
				E-0 F-0	F-1 G-0	G-1 K-0	K-1
1	COMPRESSOR	RS80C2E-CAZ-219	4A1581-01	1	1	1	1
		GENERAL EXPORT (60Hz) RS70C1E-PFV-214	4A1322-01	1	1	1	1
2	GROMMET	027-0167-01	434922-02	4	4	4	4
3	SPACER	028-0188-02	434921-01	4	4	4	4
4	BOLT	8x50	436206-01	4	4	4	4
5	CONDENSER - AIR COOLED		234113-01	1	1	1	1
6	SHROUD		234114-01	1	-		
			234114G02		1	1	1
7	BRACKET - FAN MOTOR		347909-01	1	1	-	
			370393M01			1	1
8	FAN MOTOR	H564P30HZ	2U0090-01	1	1	-	
		FM-4L27L-4F	4Y2900-01			1	1
9	FAN BLADE	FW-30PHL	417068-01	1	1	-	
		FW-30PHR	421462-01			1	1
10	SCREW - FAN MOTOR		417068F01	1	1	-	
			421462F01			1	1
11	SCREW	S.S, 5x12	454353-01	4	4	4	4
12	DRIER	DML 032.5S	462965-01	1	1	1	1
13	DRIER BRACKET		463011-01	1	1	1	1
14	PRESSURE SWITCH		459864-03	1	1	1	1
15	EXPANSION VALVE	HFE-10NHD-1	453008-01	1	1	1	1
16	COVER (A) - EXPANSION VALVE		324313-01	1	1	1	1
17	COVER (B) - EXPANSION VALVE		324313-02	1	1	1	1
18							
19							
20	COPPER TUBE (A) - HIGH SIDE		349013-01	1	1	1	1
21	COPPER TUBE (B) - HIGH SIDE		348317G01	1	1	1	1
22	HEAT EXCHANGER		236520G01	1	1	1	1
23	TEE	6.35 DIA	417394-01	1	1	1	1
24	COPPER TUBE (D) - HIGH SIDE	6.35 DIA , t0.8 L=80	111018-25	1	1	1	1
25	ELBOW	12.7 DIA	417395-03	1	1	1	1

GENERAL EXPORT
HE

MODEL: FM-481AGE, FM-481AGE-N		TITLE: E. REFRIGERATION UNIT					
INDEX NO.	DESCRIPTION	MATERIAL OR MODEL NUMBER	PART NUMBER	REQ'D NUMBER			
				E-0 F-0	F-1 G-0	G-1 K-0	K-1
26	COPPER TUBE (B) - LOW SIDE		460005-01	1	1	1	1
27	COPPER TUBE - ACCESS VALVE		348318G01	1	1	1	1
28	PUSH MOUNT TIE	T30RSF	436156-01	1	1	1	1
29	INSULATION TUBE	L=350	7762-1333	1	1	1	1
30	INSULATION TUBE	L=395	7762-3858	1	1	1	1
31	INSULATION TUBE	L=110	7762-1020	2	2	2	2
32	INSULATION TUBE	L=200	7762-3858	1	1	1	1
33	CABLE TIE	CV-100	7920-0002	1	1	1	1
34	CABLE TIE	CV-150	7920-0003	4	4	4	4
35	CABLE TIE	CV-200	7920-0010	3	3	3	3
36	CABLE TIE	CV-300	7920-0028	3	3	3	3
37	SPONGE TAPE	L=55	7820C0315	1	1	1	1
38	SPONGE TAPE	L=95	7820C0315	1	1	1	1
39	CLIP	068N2531	452254-02	2	2	2	2
40	PROTECTOR		4A1877-04	1	1	1	1



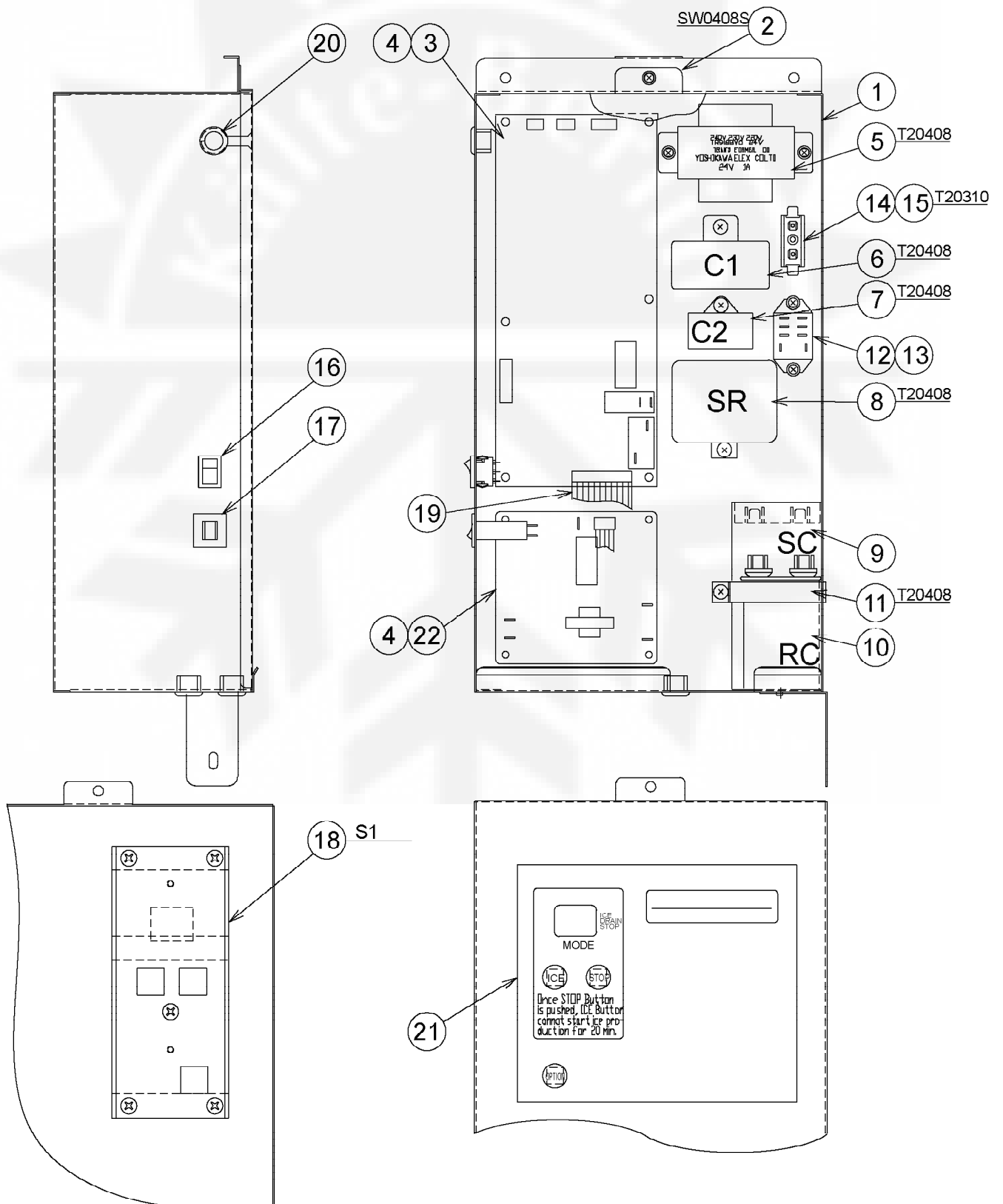
S1: CROSS RECESSED HEX HEADSCREW SUS0408

GENERAL EXPORT
HE

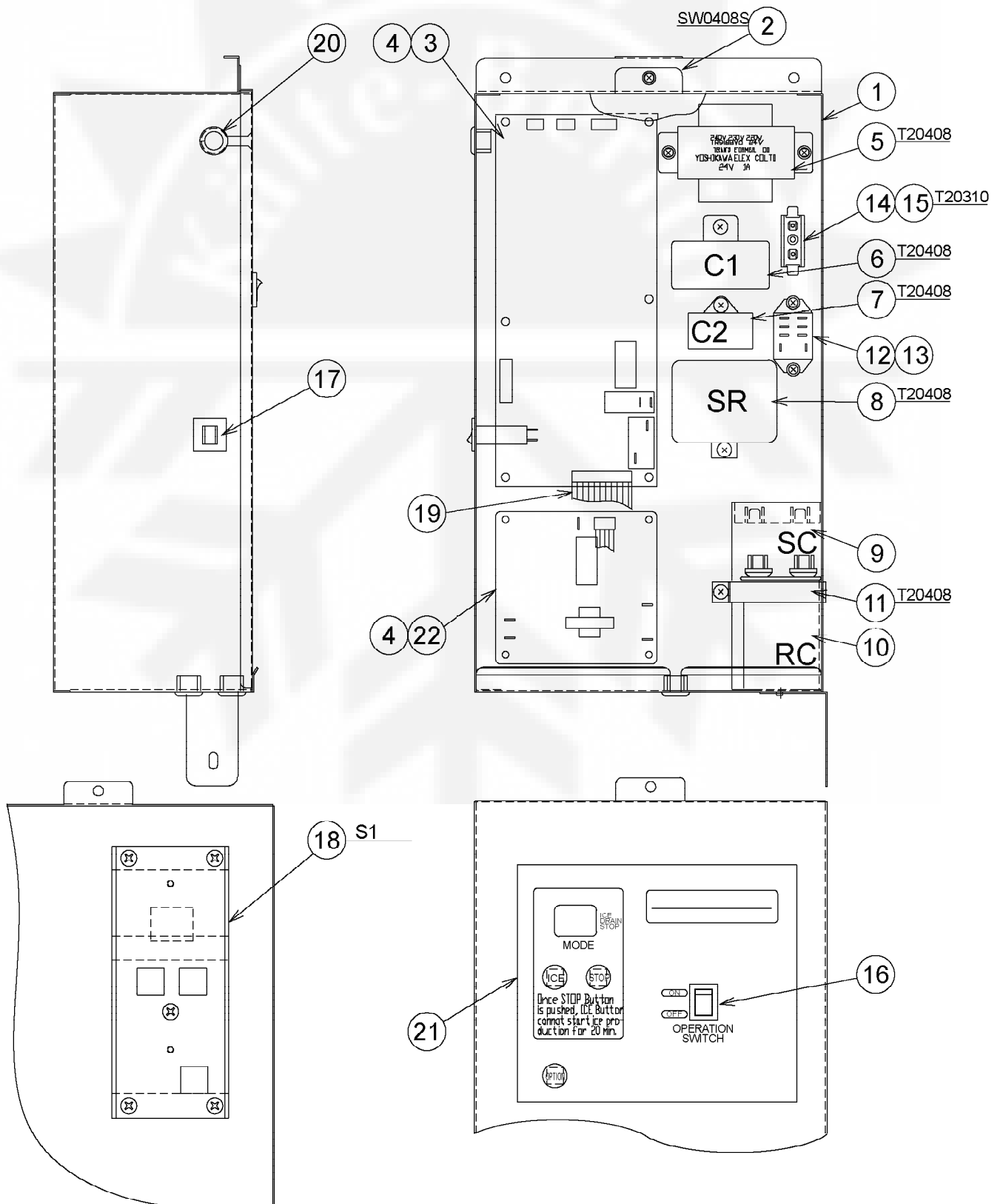
MODEL: FM-481AGE, FM-481AGE-N				TITLE: F. WATER CIRCUIT			
INDEX NO.	DESCRIPTION	MATERIAL OR MODEL NUMBER	PART NUMBER	REQ'D NUMBER			
				A-1 B-0	B-1	B-2	C-0 D-0
1	WATER VALVE	V-18	452993-01	1	1	1	1
2	PIPE - WATER SUPPLY		459687G01	1	1	1	1
3	RESERVOIR		232626-01	1	1	1	1
4	RESERVOIR COVER		232627-01	1	1	1	1
5	FLOAT SWITCH		458279-02	1	1	1	1
6	COVER - RESERVOIR INLET		415094-01	1	1	1	1
7	WATER VALVE	J241-231	3U0112-01	1	1	1	1
8	PIPE - DRAIN		460263-01	1	1	1	1
9	VALVE BRACKET		461831-01	1	1	1	1
10	DRAIN PIPE		321035-01	2	2	2	2
11	CAP		417323-01	1	1	1	1
12	CLAMP	SK-15	435934-03	1	1	1	1
13	CLAMP	SK-14	435934-02	2	2	2	2
14	CLIP BAND	T21	423866-08	1	1	1	1
15	CLIP BAND	T12	423866-03	2	2	2	2
16	SILICONE HOSE	L=60	7730-1014	1	1	1	1
17	HOSE (A)		350619-01	1	1	1	1
18	VINYL HOSE	L=310	7725-0912	1	1	1	1
19	VINYL HOSE	L=460	7725-1923	1	1	1	1
20	VINYL HOSE	L=385	7711-2024	1	1	1	1
21	HOSE (B)		348130-01	1	1	1	1
22	CABLE TIE	CV-150	7920-0003	5	5	6	6
23	FILTER		464377G01				1

GENERAL EXPORT
HE

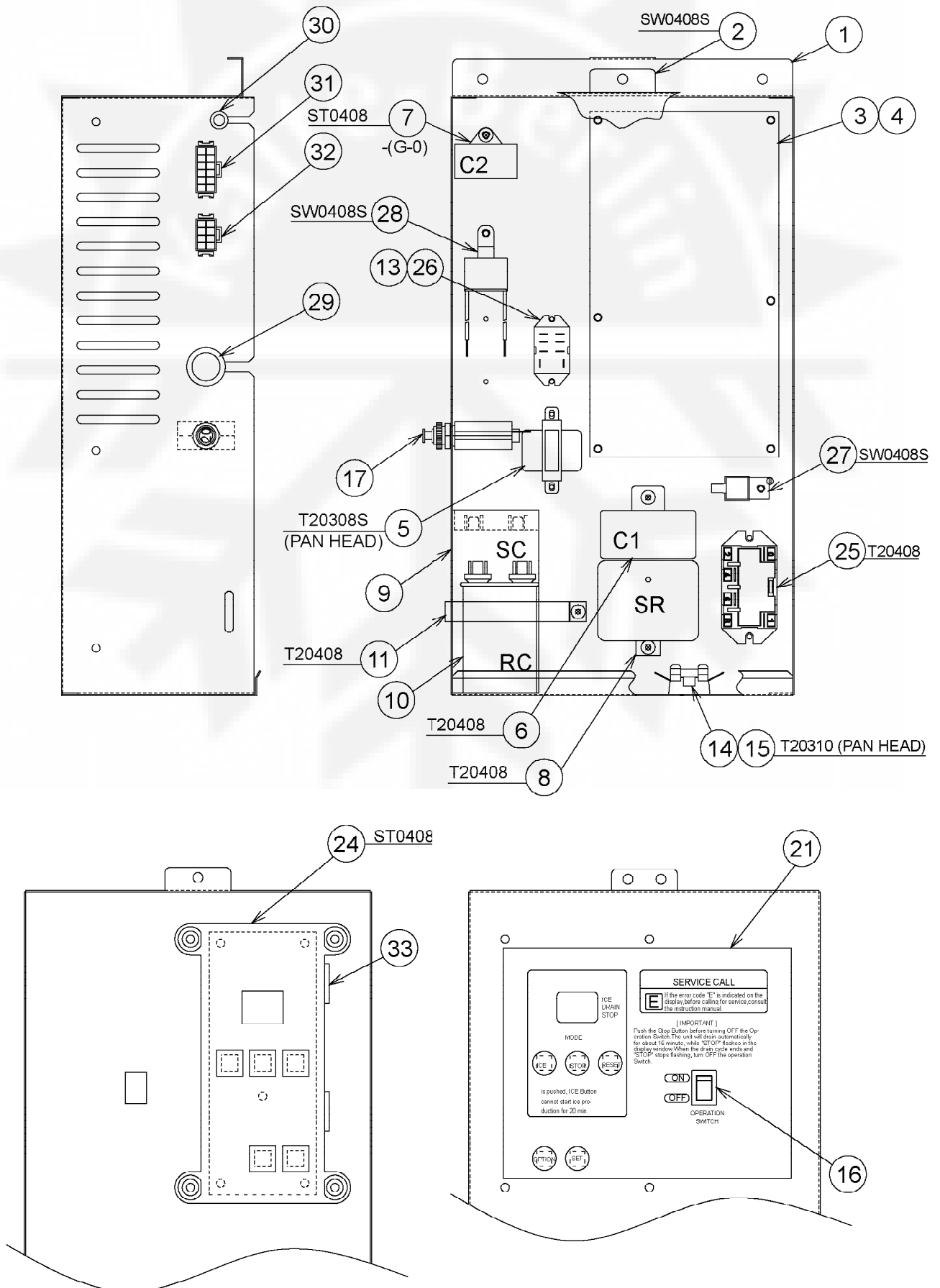
MODEL: FM-481AGE, FM-481AGE-N				TITLE: F. WATER CIRCUIT			
INDEX NO.	DESCRIPTION	MATERIAL OR MODEL NUMBER	PART NUMBER	REQ'D NUMBER			
				E-0 F-0	F-1 G-0	G-1 K-0	K-1
1	WATER VALVE	V-18	452993-01	1	1	1	1
2	PIPE - WATER SUPPLY		459687G01	1	-		
			361681G01		1	1	1
3	RESERVOIR		232626-01	1	1	1	1
4	RESERVOIR COVER		232627-01	1	1	1	1
5	FLOAT SWITCH		458279-02	1	-		
			458279-01		1	1	1
6	COVER - RESERVOIR INLET		415094-01	1	1	1	1
7	WATER VALVE	J241-231	3U0112-01	1	-		
		J241-809	468655-01		1	1	1
8	PIPE - DRAIN		460263-01	1	1	1	1
9	VALVE BRACKET		461831-01	1	1	1	1
10	DRAIN PIPE		321035-01	2	2	2	2
11	CAP		417323-01	1	1	1	1
12	CLAMP	SK-15	435934-03	1	1	1	1
13	CLAMP	SK-14	435934-02	2	2	2	2
14	CLIP BAND	T21	423866-08	1	1	1	1
15	CLIP BAND	T12	423866-03	2	2	2	2
16	SILICONE HOSE	L=60	7730-1014	1	1	1	1
17	HOSE (A)		350619-01	1	1	1	1
18	VINYL HOSE	L=350	7725-0912	1	1	1	1
19	VINYL HOSE	L=460	7725-1923	1	1	1	1
20	VINYL HOSE	L=385	7711-2024	1	1	1	1
21	HOSE (B)		348130-01	1	-		
			360004-01		1	1	1
22	CABLE TIE	CV-150	7920-0003	6	6	6	6
23	FILTER		464377G01	1	1	1	1



※S1: Truss Head Screw With Packing.



※S1:Truss Head Screw With Packing.



GENERAL EXPORT
HE

MODEL: FM-481AGE, FM-481AGE-N				TITLE: G. CONTROL BOX ASSY				
INDEX NO.	DESCRIPTION	MATERIAL OR MODEL NUMBER	PART NUMBER	REQ'D NUMBER				
				A-1 B-0	B-1	B-2	C-0 D-0	
1	CONTROL BOX		234117-01	1	-			
			237628-01		1	-		
			238615G01			1	1	
			GENERAL EXPORT (50/60Hz)	237649-01		1	-	
			238615G02			1	1	
2	COVER - CONTROL BOX		347912G01	1	1	-		
			347912G02			1	1	
3	CONTROLLER BOARD	HO4052-100	459866-09	x1				
		HO4055-100	461914-09	o1	1	1	1	
4	BOARD SUPPORT	KGLS-6S	414929-01	10	10	10	10	
5	TRANSFORMER	TR9188V0, 24VA	457382-01	1	1	1	1	
6	CAPACITOR	CMPS45B605UWC 6MFD 450VAC	459704-01	1	1	1	1	
7	CAPACITOR	CMPS25B605UWF 6MFD 250VAC	459970-01	1	1	1	1	
8	STARTER	3AR3CT10AS5	4A1107-02	1	1	1	1	
		GENERAL EXPORT (60Hz)	4A1107-13		1	1	1	
		3ARR3CT24S5						
9	CAPACITOR - STARTING	64-77MFD 250VAC	3A0076-14	1	1	1	1	
		GENERAL EXPORT (60Hz) 108-130MFD 250VAC	3A0076-02		1	1	1	
10	CAPACITOR	20MFD 370VAC	4A1631-01	1	1	1	1	
		GENERAL EXPORT (60Hz) 25MFD 370VAC	439943-02		1	1	1	

GENERAL EXPORT
HE

MODEL: FM-481AGE, FM-481AGE-N			TITLE: G. CONTROL BOX ASSY				
INDEX NO.	DESCRIPTION	MATERIAL OR MODEL NUMBER	PART NUMBER	REQ'D NUMBER			
				E-0 F-0	F-1 G-0	G-1 K-0	K-1
1	CONTROL BOX		238615G01	1	-		
	CONTROL BOX (A)		247888-02		1	1	1
	CONTROL BOX	GENERAL EXPORT	238615G02	1	-		
	CONTROL BOX (A)	(50/60Hz)	247888-02		1	1	1
2	COVER - CONTROL BOX		347912G02	1	-		
			365634-01		1	1	1
3	CONTROLLER BOARD	HO4055-100	461914-09	1	-		
	CONTROLLER BOARD-MAIN		468601-34		1	1	1
4	BOARD SUPPORT	KGLS-6S	414929-01	10	6	6	6
5	TRANSFORMER	TR9188V0, 24VA	457382-01	1	-		
		HO4071-150 0-230/0-6.5V	468601F01		1	1	1
6	CAPACITOR	CMPS45B605UWC 6MFD 450VAC	459704-01	1	1	1	1
7	CAPACITOR	CMPS25B605UWF 6MFD 250VAC	459970-01	1	1	-	
8	STARTER	3AR3CT10AS5	4A1107-02	1	1	1	1
		GENERAL EXPORT (60Hz)	4A1107-13	1	1	1	1
		3ARR3CT24S5					
9	CAPACITOR - STARTING	64-77MFD 250VAC	3A0076-14	1	1	1	1
		GENERAL EXPORT (60Hz) 108-130MFD 250VAC	3A0076-02	1	1	1	1
10	CAPACITOR	20MFD 370VAC	4A1631-01	1	1	1	1
		GENERAL EXPORT (60Hz) 25MFD 370VAC	439943-02	1	1	1	1

GENERAL EXPORT
HE

MODEL: FM-481AGE, FM-481AGE-N				TITLE: G. CONTROL BOX ASSY			
INDEX NO.	DESCRIPTION	MATERIAL OR MODEL NUMBER	PART NUMBER	REQ'D NUMBER			
				A-1 B-0	B-1	B-2	C-0 D-0
11	STRAP		434174-04	1	1	1	1
		GENERAL EXPORT (60Hz)	434174-10		1	1	1
12	RELAY	LY2F AC240V	406132-08	1	1	1	1
13	TAPPING SCREW	3x8	431415-01	2	2	2	2
14	FUSE HOLDER	445710	451925-01	1	1	1	1
15	FUSE	218, 3.15A	451924-02	1	1	1	1
16	ROCKER SWITCH	SLE6D2	446719-01	1	1	1	1
17	PROTECTOR	W28-XQ1A-3 3A	440972-02	1	1	1	1
18	OPERATION BOARD	HO4042-200	458034-01	1	1	1	1
19	HARNESS		458521-01	1	1	1	1
20	BUSHING	OCB-625	428394-03	3	3	3	3
21	CONTROL LABEL		350079-01	1	-		
			351114-01		1	1	1
22	SUB BOARD - CURRENT		461144-01	1	1	1	1
23	SLIDE SWITCH	GENERAL EXPORT (50/60Hz)	435349-01		1	1	1
		FS113					

GENERAL EXPORT
HE

MODEL: FM-481AGE, FM-481AGE-N				TITLE: G. CONTROL BOX ASSY			
INDEX NO.	DESCRIPTION	MATERIAL OR MODEL NUMBER	PART NUMBER	REQ'D NUMBER			
				E-0 F-0	F-1 G-0	G-1 K-0	K-1
11	STRAP		434174-04	1	1	1	1
		GENERAL EXPORT (60Hz)	434174-10	1	1	1	1
12	RELAY	LY2F AC240V	406132-08	1	-		
13	TAPPING SCREW	3x8	431415-01	2	2	2	2
14	FUSE HOLDER	445710	451925-01	-			
		CFH15	4Y2547-01	1	1	1	1
15	FUSE	218, 3.15A	451924-02	1	1	1	1
16	ROCKER SWITCH	SLE6D2	446719-01	1	-		
		SLE6A2	446719-02		1	1	1
17	PROTECTOR	W28-XQ1A-3 3A	440972-02	1	-		
		W58-XB1A4A-20	425201-05		1	1	1
18	OPERATION BOARD	HO4042-200	458034-01	1	-		
19	HARNESS		458521-01	1	-		
20	BUSHING	OCB-625	428394-03	3	-		
21	CONTROL LABEL		351114-01	1	-		
			358611-01		1	1	1
22	SUB BOARD - CURRENT		461144-01	1	-		
23	SLIDE SWITCH	GENERAL EXPORT (50/60Hz)	435349-01	1	-		
		FS113					
24	CONTROLLER BOARD-OPERATION		465645-01		1	1	1
25	POWER RELAY	G7L-1A-TUB	449000-01		1	1	1
26	POWER RELAY	LY2F	406132-08		1	1	1
27	SURGE ABSORBER		436573-02		1	1	1
28	CAPACITOR-XY FILTER		460523-01		1	1	1
29	BUSHING	OCB-875	428394-04		1	1	1
30	BUSHING	OCB-375	428394-07		1	1	1
31	HARNESS (A)		470240G01		1	1	1
32	HARNESS (B)		469415G01		1	1	1
33	HARNESS (D)		363728G01		1	1	1

