

NO.	E1EA-2671
ISSUED:	MAR. 2005
REVISED:	MAR. 2011

@ĀI•@æāY>|~āà^ā^ā^ĀI

SèlĒŌ!jā
 ŌĒ ĀU-æ!æ^ĀĀF
 FGGEJĀŌ!jā
 Ō} KĒI JĀĒĀI ĀĒĀ ĒĀG
 ŌæKĒI JĀĒĀI ĀĒĀ ĒĀF
 T æĀĒ { Ō\æ!ĒĒĀ!jā ĒĀ
 QĒ!}^dĀ , Ēæ!ĒĒĀ!jā Ē{



**HOSHIZAKI
 SELF-CONTAINED CUBER**

**MODEL IM-240M2E
 IM-240M2E-21
 IM-240M2E-23**

PARTS LIST

[HE, GENERAL (50Hz) (60Hz), KOREA, HSP, CHINA]

D-1	NOV. 2004	J-0	JAN. 2009
E-0	DEC. 2004	K-0	JAN. 2010
E-1	APR. 2005	A-0	JAN. 2011
F-0	DEC. 2005		
F-1	MAY. 2006		
G-0	JAN. 2007		
G-1	MAY. 2007		
G-2	DCE. 2007		
H-1	JAN. 2008		
H-2	JUL. 2008		

MATERIAL ABBREVIATIONS

ALUMINUM

AL = Aluminum

COPPER

CU = Copper

PLASTIC

ABS = Acrylonitrile -butadiene - styrene
AC = Polyacetal
EVA = Ethylene vinyl acetate
PA = Polyamide = Nylon
PC = Polycarbonate
PE = Polyethylene
PES = Polyester
PETP = Polyethylene terephthalate = Tetlon
PP = Polypropylene
PS = Polystyrene
PTFE = Polytetrafluoroethylene = Teflon
PUR = Polyurethane
PVC = Polyvinyl chloride

RUBBER

VN = Vinyl Nitrile
EPDM = EP rubber
NBR = Nitrile butadiene rubber
NR = Natural rubber
NP = Neoprene
SI.R = Silicone rubber
SY.R = Synthetic rubber
EPH = Epichlorohydrin

STEEL

GS = Galvanized steel
SS = Stainless steel
PS = Plated steel
PAS = Primed steel

AUXILIARY CODE

K-0

Designates the year. "K" indicates the year 2000. Years progress or regress in alphabetical order. "J" is 1999, "L" is 2001, "M" is 2002, and so on. The letters "I" and "O" were skipped.
Designates significant part changes within the same year. Base is 0 and this number advances for each change.

Example: P-1

"P" indicates 2004.

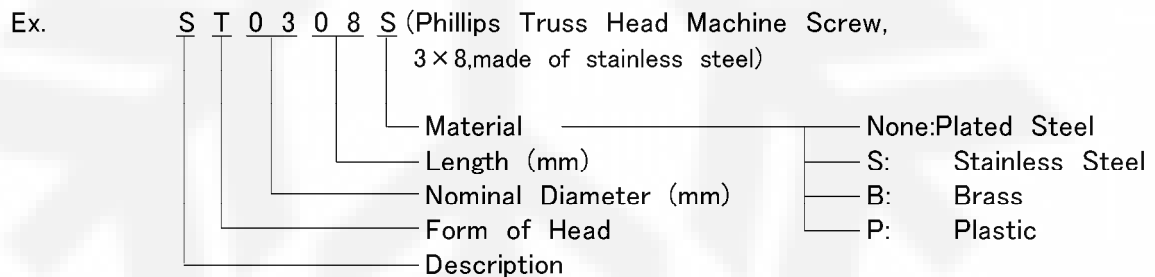
"1" indicates the first significant part change for 2004.

MARKS LOCATED UNDER THE AUXILIARY CODE

- = Part deleted.
- x = Part deleted and replaced by "o" part.
- o = New part in place of "x" part.

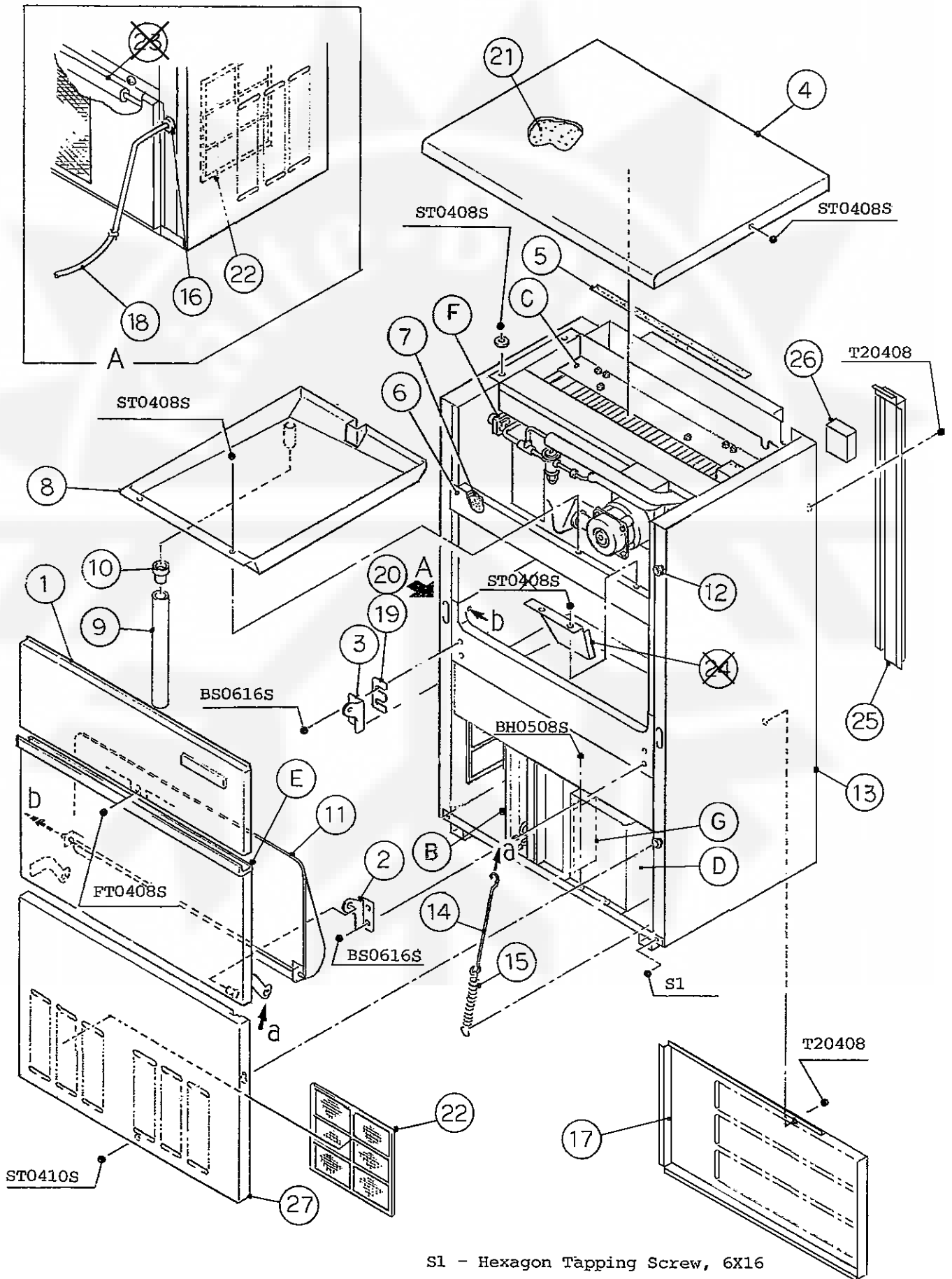
FASTENER ABBREVIATION LIST

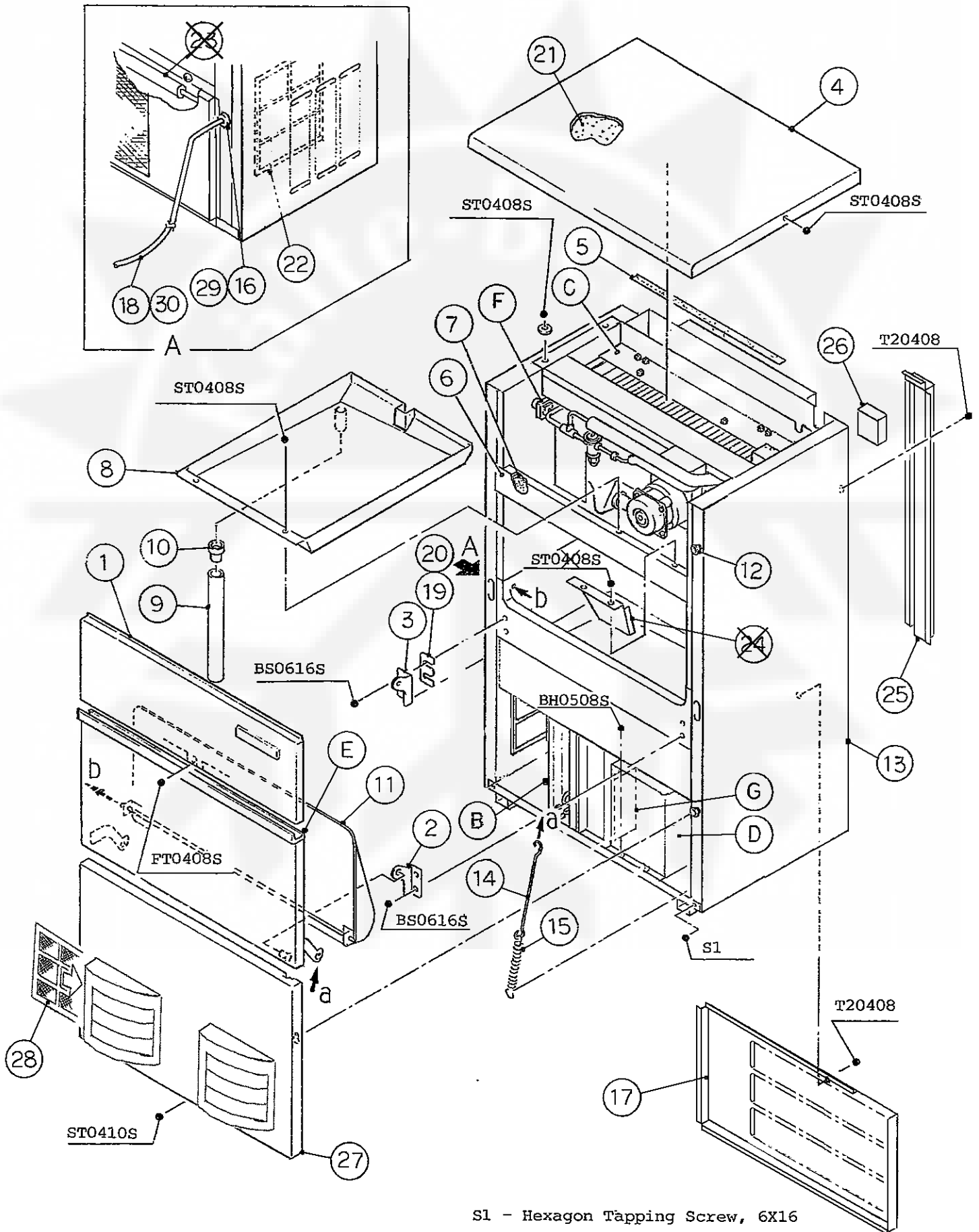
ST	=	Phillips Truss Head Machine Screw
SP	=	Phillips Pan Head Machine Screw
SF	=	Phillips Flat Head Machine Screw
SS	=	Phillips Pan Head Machine Screw with Split Lock Washer
SW	=	Phillips Pan Head Machine Screw with Split Lock Washer and Flat Washer
T1	=	Phillips Truss Head Tapping Screw (Correspond to Type A)
T2	=	Phillips Truss Head Tapping Screw (Correspond to Type B)
T3	=	Phillips Truss Head Tapping Screw (Correspond to Type C)
FT	=	Phillips Truss Head Tapping Screw (Special)
BH	=	Hexagon Head Bolt
BC	=	Socket Head Cap Screw
BS	=	Hexagon Bolt with Split Washer
BW	=	Hexagon Bolt with Split Washer and Flat Washer
BF	=	Hexagon Flange Bolt
BR	=	Cross-Recessed Hexagon Head Bolt
BRW	=	Cross-Recessed Hexagon Head Bolt with Split Lock Washer and Flat Washer
WL	=	Split Lock Washer
WT	=	External Tooth Washer
WF	=	Flat Washer
WS	=	Spring Washer
NH	=	Hexagon Nut
NF	=	Hexagon Flange Nut
NC	=	Hexagon Cap Nut
NS	=	Square Nut
NW	=	Wing Nut



(Note) Second character is numerical except the list.
 Ex: S1,S2,B3 etc.

And abbreviations and names are shown under the illustration.





S1 - Hexagon Tapping Screw, 6X16

HE, GENERAL,KOREA,HSP

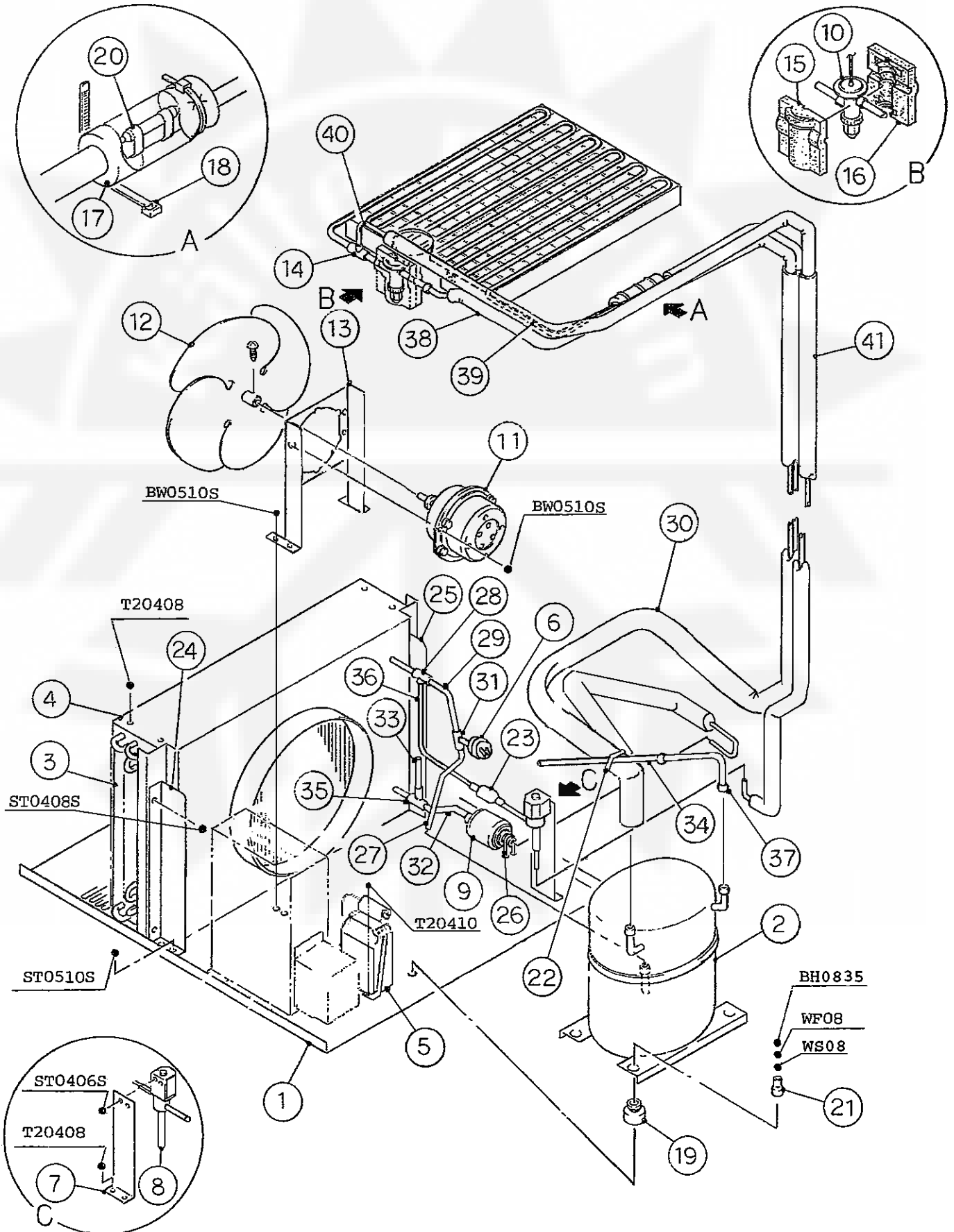
MODEL : IM-240M2E IM-240M2E-21, -23				TITLE : A. ICE CUBER ASSY			
INDEX NO.	DESCRIPTION	MATERIAL OR MODEL NUMBER	PART NUMBER	REQ'D NUMBER			
				D-1 E-0	E-1 F-0	F-1 G-0	G-1
B	REFRIGERATION ASSY	(240M2E)	-	1	1	-	
			1H3433A01			1	1
	1H3433A02						
	REFRIGERATION ASSY	(240M2E-21, -23)	-	1	1	1	1
C	ICE MAKING MECHANISM ASSY	(240M2E)	1H2006A01	1	1	1	1
	ICE MAKING MECHANISM ASSY	(240M2E-21, -23)	-	1	1	1	1
D	CONTROL BOX ASSY	-	2H5606A02	1	-		
			2H6764A02		1	-	
			2H7543A04			1	1
E	DOOR ASSY	-	3H1420A07	1	1	1	1
			3Y2909A01				
			3Y3817A01				
F	WATER CIRCUIT ASSY	-	3X3010A03	1	1	1	1
G	LABEL LOCATION	(240M2E)	3X9275A01	1	-		
			3X9275A02		1	1	1
	LABEL LOCATION	(240M2E-21, -23)	-	1	1	1	1
1	FRONT PANEL (UPPER)		3X9124G01	1	1	1	1
2	HINGE (RIGHT)	S.S	4H2583-01	1	1	1	1
3	HINGE (LEFT)	S.S	4H2584-01	1	1	1	1
4	TOP PANEL	S.S	3X3011-01	1	1	1	1
5	SEAL	TP-230, t3x15x700	1H3058-45	1	1	1	1
6	FRONT FRAME	S.S	3X9103-01	1	1	1	1
7	INSULATION - FRONT FRAME	PE	4X6809-02	1	1	1	1
8	DRAIN PAN	ABS	3Y3998G01	1	1	1	1
9	PIPE - DRAIN	ABS	4X7117-02	1	1	1	1
10	DRAIN TUBE	SI	4H2585-01	1	1	1	1
11	SLOPE	ABS	3X4854G01	1	1	1	1
12	TAPER COLLAR	S.S	4H0171-01	4	4	4	4
13	UNIT BODY	-	1H3441G01	1	1	1	-
			1H3441G03				1
14	HOOK	S.S	4H2685-03	1	1	1	1
15	SPRING	ZINC-PLATED WIRE	4H0823-01	1	1	1	1

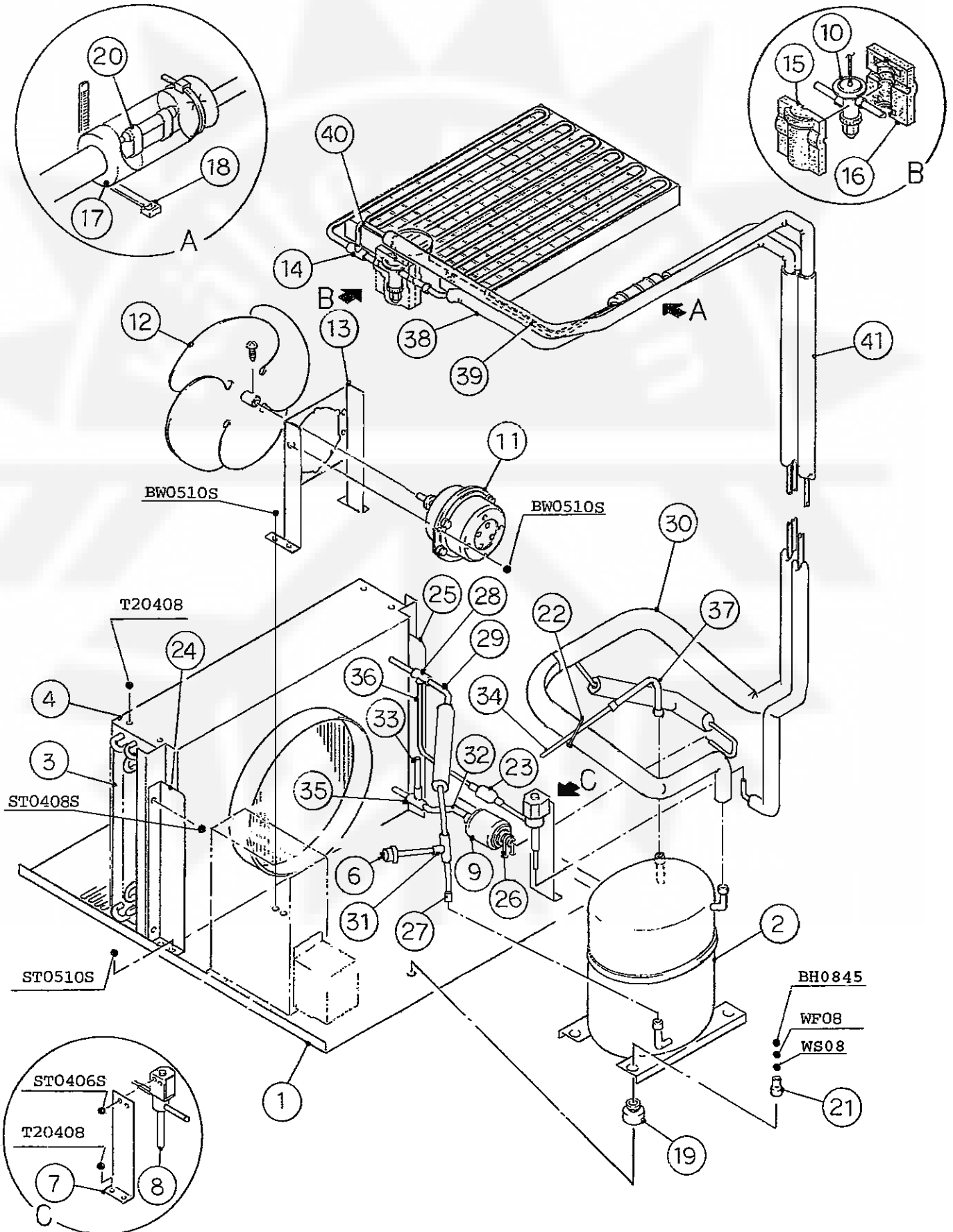
HE, GENERAL,KOREA,HSP,CHINA

MODEL : IM-240M2E IM-240M2E-21, -23				TITLE : A. ICE CUBER ASSY			
INDEX NO.	DESCRIPTION	MATERIAL OR MODEL NUMBER	PART NUMBER	REQ'D NUMBER			
				G-2	H-1	H-2,J-0 K-0,A-0	
B	REFRIGERATION ASSY	(240M2E)	-				
			1H3433A01	1	-		
	1H3433A02		1	1			
	REFRIGERATION ASSY	(240M2E-21, -23)	-	1	1	1	
C	ICE MAKING MECHANISM ASSY	(240M2E)	1H2006A01	1	1	1	
	ICE MAKING MECHANISM ASSY	(240M2E-21, -23)	-	1	1	1	
D	CONTROL BOX ASSY	-	-				
		-	-				
		-	2H7543A04	1	1	1	
E	DOOR ASSY	-	3H1420A07	-			
		-	3Y2909A01	1	1	-	
		-	3Y3817A01			1	
F	WATER CIRCUIT ASSY	-	3X3010A03	1	1	1	
G	LABEL LOCATION	(240M2E)	-				
	LABEL LOCATION	(240M2E-21, -23)	-	1	1	1	
1	FRONT PANEL (UPPER)		3X9124G01	1	1	1	
2	HINGE (RIGHT)	S.S	4H2583-01	1	1	1	
3	HINGE (LEFT)	S.S	4H2584-01	1	1	1	
4	TOP PANEL	S.S	3X3011-01	1	1	1	
5	SEAL	TP-230, t3x15x700	1H3058-45	1	1	1	
6	FRONT FRAME	S.S	3X9103-01	1	1	1	
7	INSULATION - FRONT FRAME	PE	4X6809-02	1	1	1	
8	DRAIN PAN	ABS	3Y3998G01	1	1	1	
9	PIPE - DRAIN	ABS	4X7117-02	1	1	1	
10	DRAIN TUBE	SI	4H2585-01	1	1	1	
11	SLOPE	ABS	3X4854G01	1	1	1	
12	TAPER COLLAR	S.S	4H0171-01	4	4	4	
13	UNIT BODY	-	-				
		-	1H3441G03	1	1	1	
14	HOOK	S.S	4H2685-03	1	1	1	
15	SPRING	ZINC-PLATED WIRE	4H0823-01	1	1	1	

HE, GENERAL,KOREA,HSP

MODEL : IM-240M2E IM-240M2E-21, -23								TITLE : A. ICE CUBER ASSY			
INDEX NO.	DESCRIPTION	MATERIAL OR MODEL NUMBER	PART NUMBER	REQ'D NUMBER							
				D-1 E-0	E-1 F-0	F-1 G-0	G-1				
16	CORD BUSHING	CEE SR-6P30	450414-01	1	1	1	x				
17	REAR PANEL	G.S	3X9259G01	1	1	-					
		G.S	2H7584-01			1	1				
18	POWER SUPPLY CORD (CONTINENTAL)	(HE) (GENERAL 60Hz) (KOREA)	452264-01	1	1	1	x				
	POWER SUPPLY CORD (UK)	(HE) (GENERAL 50Hz) (HSP)	452265-01	1	1	1	x				
19	HINGE SPACER (A)	S.S	4H0605-01	REQ'D	REQ'D	REQ'D	REQ'D				
20	HINGE SPACER (B)	S.S	4H0605-02	REQ'D	REQ'D	REQ'D	REQ'D				
21	INSULATION - TOP PANEL		3X9100-01	1	1	1	1				
22	AIR FILTER	PP	332632G01	2	2	1	1				
25	COVER / PIPE	G.S	2H6669-01	1	1	1	1				
26	INSULATION / PIPE	PE	4Y2507-01	1	1	1	1				
27	FRONT PANEL (LOWER)	S.S	3X9097G01	1	1	-					
		S.S	3Y1196G01			1	1				
28	AIR FILTER(B)	PP	2A2063G01			2	2				
29	CONNECTOR	-	P00246-01				1				
30	POWER CORD	(CONTINENTAL)	P00243-01				1				
	POWER CORD (WITH UK PLUG)	(UK)	P00244-01				1				





HE, GENERAL,KOREA,HSP

MODEL : IM-240M2E IM-240M2E-21, -23				TITLE : B. REFRIGERATION ASSY			
INDEX NO.	DESCRIPTION	MATERIAL OR MODEL NUMBER	PART NUMBER	REQ'D NUMBER			
				D-1 E-0	E-1 F-0	F-1 G-0	G-1
1	BASE	G.S	3X9101G01	1	1	—	
		G.S	3Y0893G01			1	1
2	COMPRESSOR	MS26TG-T	463138-01	1	1	—	
		RS80C2E-CAZ-219	4A1581-01			1	1
3	CONDENSER - AIR COOLED	-	2H6680-01	1	1	1	1
4	SHROUD	G.S	2H6671-01	1	1	—	
		G.S	2H7582-01			1	1
5	TERMINAL BOX		463142-01	1	1	×	
6	PRESSURE SWITCH	SEP-P320HHD-1	459868-03	1	1	1	1
7	BRACKET - HOT GAS VALVE	G.S	4Y0241-01	1	1	1	1
8	HOT GAS VALVE	ATS-7S10HD-1	418636-02	1	1	1	1
9	DRIER	DML 032. 5S	462965-01	1	1	1	1
10	EXPANSION VALVE	FSE-10NHD-2	454836-02	1	1	1	1
11	FAN MOTOR	4A121A1	453036-01	1	1	1	1
12	FAN BLADE	A-0145	453035-01	1	1	1	1
13	BRACKET - FAN MOTOR	G.S	3X9104-01	1	1	—	
		G.S	3X6458-01			1	1
14	TEE	COPPER	430608-01	1	1	1	1
15	COVER (A) - EXPANSION VALVE	PE	4H9239-01	1	1	1	1
16	COVER (B) - EXPANSION VALVE	PE	4H9239-02	1	1	1	1
17	INSULATION	25 ID x 35 OD L=130	4X8643-01	1	1	1	1
18	TIE	CV-150	7920-0003	2	2	2	2
19	GROMMET	-	4Y1557-01	4	4	—	
		-	434922-02			4	4
20	CLIP	068N2530	452254-02	2	2	2	2
21	SPACER	-	4Y1558-01	4	4	—	
		-	434921-01			4	4
22	TIE	CV-100	7920-0002	1	1	1	1
23	STRAINER	COPPER	430365-02	1	1	1	1
24	BRACKET - CONDENSER (L)	G.S	4X7126-01	1	1	1	1
25	BRACKET - CONDENSER (R)	G.S	4X7126-02	1	1	1	1
26	TIE	T50RSF	436156-02	1	1	1	1

HE, GENERAL,KOREA,HSP,CHINA

MODEL : IM-240M2E IM-240M2E-21, -23				TITLE : B. REFRIGERATION ASSY			
INDEX NO.	DESCRIPTION	MATERIAL OR MODEL NUMBER	PART NUMBER	REQ'D NUMBER			
				G-2	H-1	H-2,J-0 K-0,A-0	
1	BASE	-	-				
		G.S	3Y0893G01	1	1	1	
2	COMPRESSOR	-	-				
		RS80C2E-CAZ-219	4A1581-01	1	1	1	
3	CONDENSER - AIR COOLED	-	2H6680-01	1	1	1	
4	SHROUD	-	-				
		G.S	2H7582-01	1	1	1	
5	-	-	-				
6	PRESSURE SWITCH	SEP-P320HHD-1	459868-03	1	1	1	
7	BRACKET - HOT GAS VALVE	G.S	4Y0241-01	1	1	1	
8	HOT GAS VALVE	ATS-7S10HD-1	418636-02	1	1	1	
9	DRIER	DML 032. 5S	462965-01	1	1	1	
10	EXPANSION VALVE	FSE-10NHD-2	454836-02	1	1	1	
11	FAN MOTOR	4A121A1	453036-01	1	1	1	
12	FAN BLADE	A-0145	453035-01	1	1	1	
13	BRACKET - FAN MOTOR	-	-				
		G.S	3X6458-01	1	1	1	
14	TEE	COPPER	430608-01	1	1	1	
15	COVER (A) - EXPANSION VALVE	PE	4H9239-01	1	1	1	
16	COVER (B) - EXPANSION VALVE	PE	4H9239-02	1	1	1	
17	INSULATION	25 ID x 35 OD L=130	4X8643-01	1	1	1	
18	TIE	CV-150	7920-0003	2	2	2	
19	GROMMET	-	-				
		-	434922-02	4	4	4	
20	CLIP	068N2530	452254-02	2	2	2	
21	SPACER	-	-				
		-	434921-01	4	4	4	
22	TIE	CV-100	7920-0002	1	1	1	
23	STRAINER	COPPER	430365-02	1	1	1	
24	BRACKET - CONDENSER (L)	G.S	4X7126-01	1	1	1	
25	BRACKET - CONDENSER (R)	G.S	4X7126-02	1	1	1	
26	TIE	T50RSF	436156-02	1	1	1	

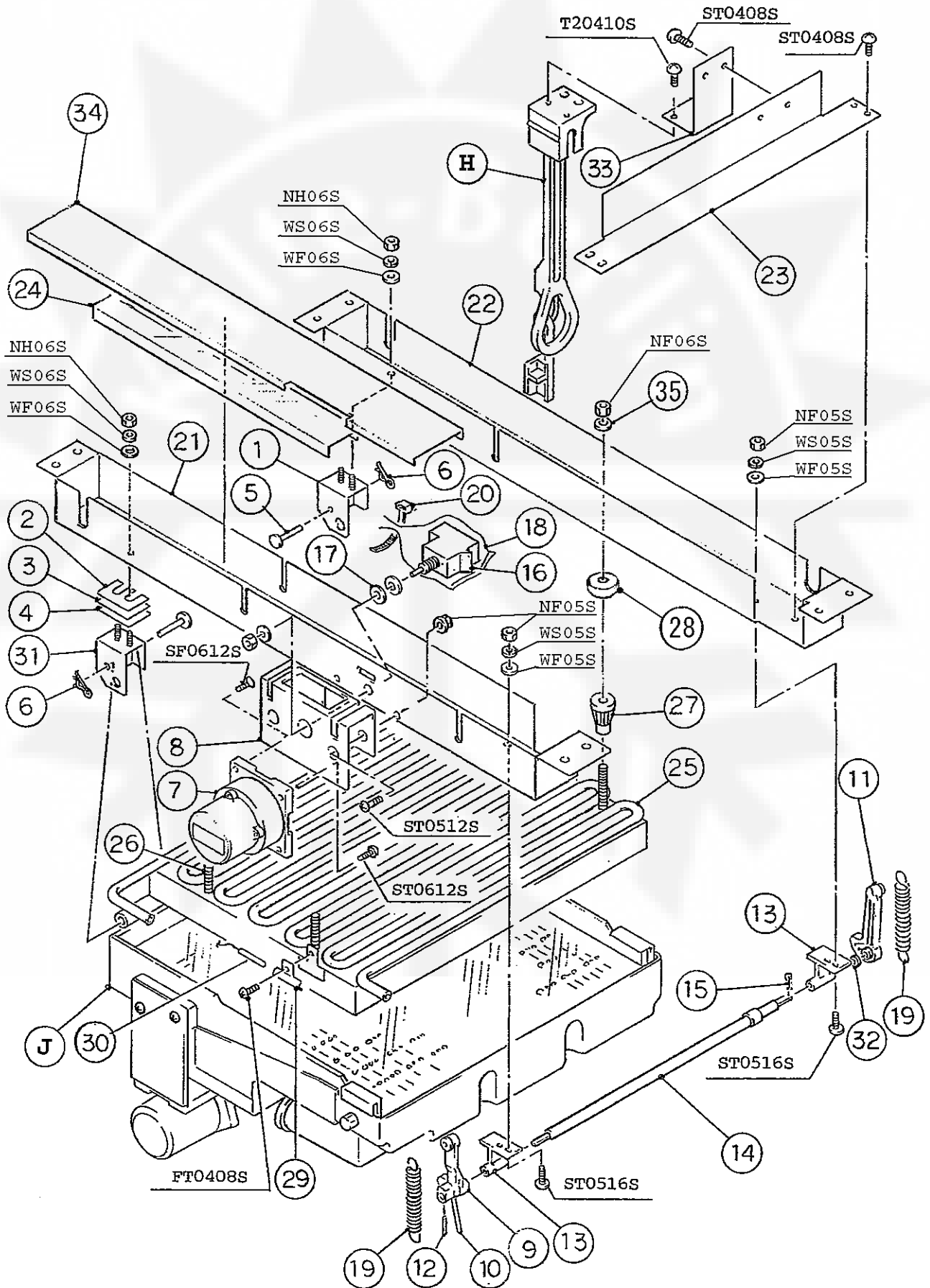
HE, GENERAL,KOREA,HSP

MODEL : IM-240M2E IM-240M2E-21, -23				TITLE : B. REFRIGERATION ASSY			
INDEX NO.	DESCRIPTION	MATERIAL OR MODEL NUMBER	PART NUMBER	REQ'D NUMBER			
				D-1 E-0	E-1 F-0	F-1 G-0	G-1
27	COPPER TUBE (A) - HIGH SIDE	COPPER	4Y2421-01	1	1	—	
		COPPER	4Y3638-01			1	1
28	TEE	COPPER	420041-02	1	1	1	1
		COPPER	420041-11				
29	COPPER TUBE (B) - HIGH SIDE	COPPER	4Y2420-01	1	1	—	
		COPPER	4Y3639G01			1	1
30	HEAT EXCHANGER	COPPER	3X9131G01	1	1	—	
		COPPER	3Y1190G01			1	1
31	TEE	COPPER	420041-02	1	1	1	1
32	COPPER TUBE (C) - HIGH SIDE	COPPER	4Y2419-01	1	1	1	1
33	PROCESS TUBE	COPPER	4Y0273-01	1	1	1	1
34	PIPE	COPPER	4H9158-04	1	1	1	1
35	TEE	COPPER	420041-02	1	1	1	1
36	COPPER TUBE (A) - HOT GAS	COPPER	4Y2422-01	1	1	1	1
		COPPER	4Y5068M01				
37	PROCESS TUBE	COPPER	4Y2423-01	1	1	1	1
38	COPPER TUBE (E) - HIGH SIDE	COPPER	3X9284G01	1	1	1	1
39	COPPER TUBE (A) - LOW SIDE	COPPER	3X3257G02	1	1	1	1
40	COPPER TUBE (C) - HOT GAS	COPPER	3X9133G01	1	1	1	1
		COPPER	3X9133G02				
41	COPPER TUBE (B) - HOT GAS	COPPER	3X9132G01	1	1	1	1
		COPPER	3X9132G02				

IM-240M2E
IM-240M2E-21,23

C. ICE MAKING MECHANISM ASSY

(F-1) (G-0) (G-1) and later
(D-1) (E-0) (E-1) (F-0)

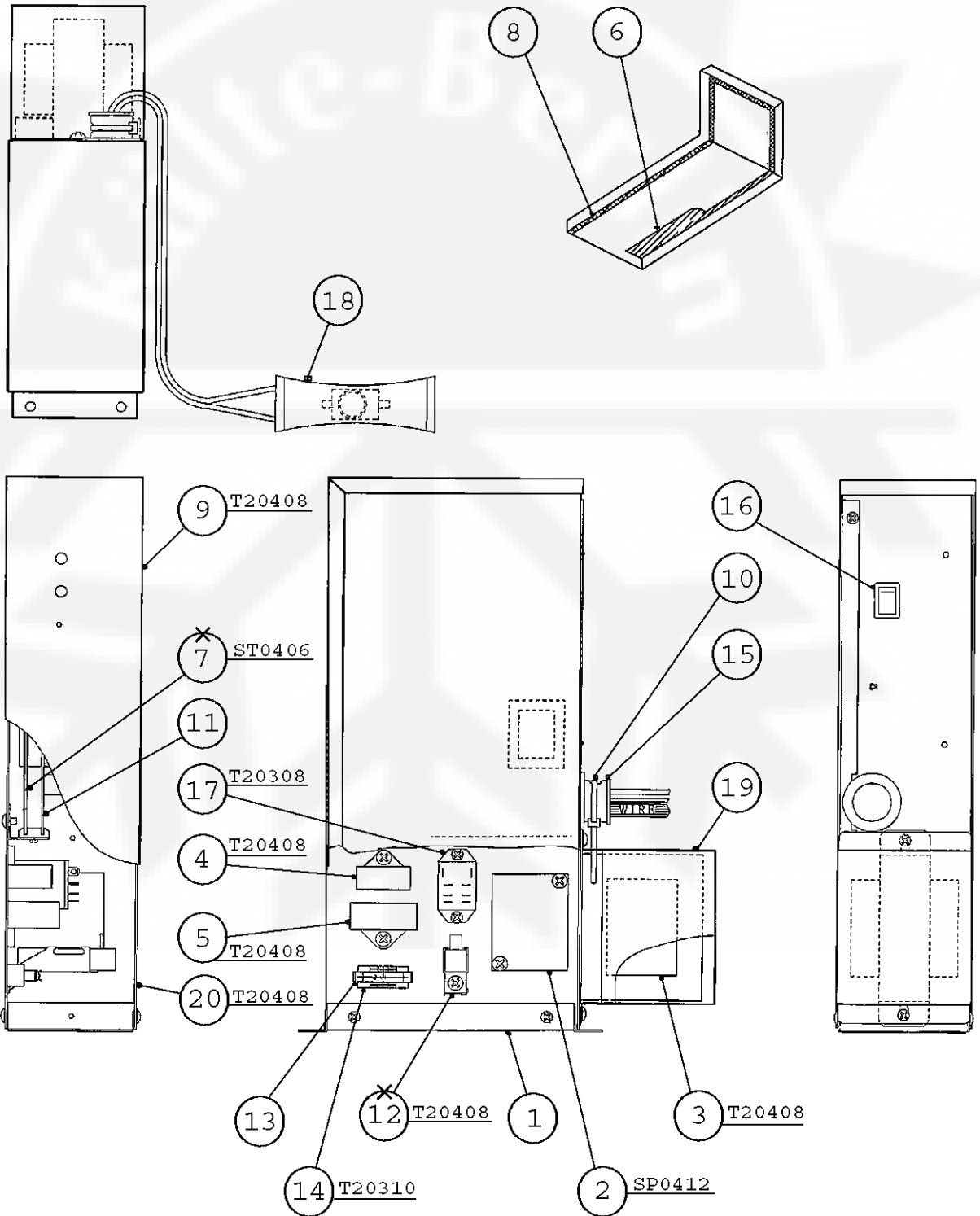


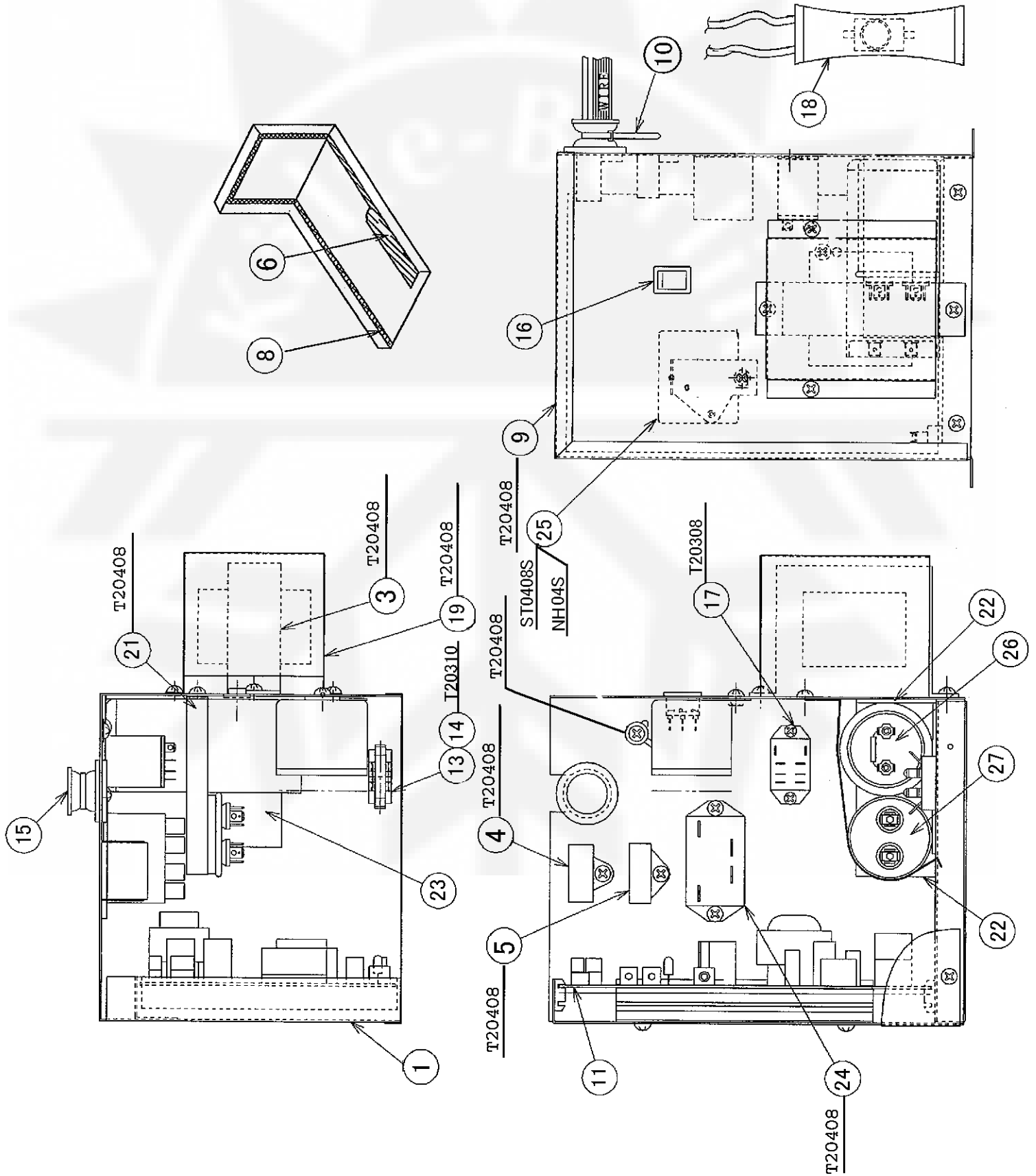
HE, GENERAL,KOREA,HSP

MODEL : IM-240M2E IM-240M2E-21, -23				TITLE : C. ICE MAKING MECHANISM ASSY			
INDEX NO.	DESCRIPTION	MATERIAL OR MODEL NUMBER	PART NUMBER	REQ'D NUMBER			
				D-1 E-0	E-1 F-0	F-1 G-0	G-1
H	BIN CONTROL SWITCH ASSY	(S-0819)	3H1538A02	1	1	1	1
J	WATER PAN ASSY	(240M2E, -23)	103108A19	1	1	1	1
	WATER PAN ASSY	(240M2E-21)	-	1	1	1	1
1	HANGER BRACKET	S.S	3H1440G02	1	1	1	1
2	SHIM (A) - EVAPORATOR	S.S	4H2691-01	REQ'D	REQ'D	REQ'D	REQ'D
3	SHIM (B) - EVAPORATOR	S.S	4H2691-02	REQ'D	REQ'D	REQ'D	REQ'D
4	SHIM (C) - EVAPORATOR	S.S	4H2691-03	REQ'D	REQ'D	REQ'D	REQ'D
5	SHAFT (B)	S.S	4H1184-02	2	2	2	2
6	SNAP PIN	S.S,No.6	7152-0600	2	2	2	2
7	ACTUATOR MOTOR	SR65A41-13	452499-01	1	1	1	1
8	BRACKET - ACTUATOR MOTOR	G.S	3H2241-01	1	1	1	1
9	CAM (A)	POM	306543G02	1	1	1	1
10	CHANGE LEVER	S.S	406261-01	1	1	1	1
11	CAM (B)	AC	315775-01	1	1	1	1
12	SPRING PIN	S.S, 3x28	712S-0328	1	1	1	1
13	CAM SHAFT HOLDER	ABS	3X8307-01	2	2	2	2
14	CAM SHAFT	S.S	425511G01	1	1	1	1
15	SPLIT PIN	S.S, 2x12	711S-0212	1	1	1	1
16	TOGGLE SWITCH	VAT4-71	431977-01	1	1	1	1
17	WASHER - TOGGLE SWITCH	S.S	406196-01	1	1	1	1
18	COVER - THERMISTOR	PE	408163-01	1	1	1	1
19	SPRING	S.S	4H3473-01	2	2	2	2
20	TIE	CV-70	7920-0001	1	1	1	1
21	FRAME - FRONT	G.S	3X3030-01	1	1	1	1
22	FRAME - REAR	G.S	3X3031-01	1	1	1	1
23	FRAME	G.S	4X7130-01	1	1	1	1
24	GUIDE - CONNECTOR	PVC	4H5619-01	1	1	1	1
25	EVAPORATOR (S-0857)	(240M2E)	208206G02	1	1	1	1
	EVAPORATOR (S-0858)	(240M2E-21)	208205G02	1	1	1	1
	EVAPORATOR (S-0859)	(240M2E-23)	2H1833G02	1	1	1	1
26	BOLT - EVAPORATOR MOUNTING	(240M2E)	4H2678-01	4	4	4	4
	BOLT - EVAPORATOR MOUNTING	(240M2E-21, -23)	4H2886-01	4	4	4	4
27	COLLAR		3H3879-01	4	4	4	4

HE, GENERAL,KOREA,HSP,CHINA

MODEL : IM-240M2E IM-240M2E-21, -23				TITLE : C. ICE MAKING MECHANISM ASSY			
INDEX NO.	DESCRIPTION	MATERIAL OR MODEL NUMBER	PART NUMBER	REQ'D NUMBER			
				G-2	H-1	H-2,J-0 K-0,A-0	
H	BIN CONTROL SWITCH ASSY	(S-0819)	3H1538A02	1	1	1	
J	WATER PAN ASSY	(240M2E, -23)	103108A19	1	1	1	
	WATER PAN ASSY	(240M2E-21)	-	1	1	1	
1	HANGER BRACKET	S.S	3H1440G02	1	1	1	
2	SHIM (A) - EVAPORATOR	S.S	4H2691-01	REQ'D	REQ'D	REQ'D	
3	SHIM (B) - EVAPORATOR	S.S	4H2691-02	REQ'D	REQ'D	REQ'D	
4	SHIM (C) - EVAPORATOR	S.S	4H2691-03	REQ'D	REQ'D	REQ'D	
5	SHAFT (B)	S.S	4H1184-02	2	2	2	
6	SNAP PIN	S.S,No.6	7152-0600	2	2	2	
7	ACTUATOR MOTOR	SR65A41-13	452499-01	1	1	1	
8	BRACKET - ACTUATOR MOTOR	G.S	3H2241-01	1	1	1	
9	CAM (A)	POM	306543G02	1	1	1	
10	CHANGE LEVER	S.S	406261-01	1	1	1	
11	CAM (B)	AC	315775-01	1	1	1	
12	SPRING PIN	S.S, 3x28	712S-0328	1	1	1	
13	CAM SHAFT HOLDER	ABS	3X8307-01	2	2	2	
14	CAM SHAFT	S.S	425511G01	1	1	1	
15	SPLIT PIN	S.S, 2x12	711S-0212	1	1	1	
16	TOGGLE SWITCH	VAT4-71	431977-01	1	1	1	
17	WASHER - TOGGLE SWITCH	S.S	406196-01	1	1	1	
18	COVER - THERMISTOR	PE	408163-01	1	1	1	
19	SPRING	S.S	4H3473-01	2	2	2	
20	TIE	CV-70	7920-0001	1	1	1	
21	FRAME - FRONT	G.S	3X3030-01	1	1	1	
22	FRAME - REAR	G.S	3X3031-01	1	1	1	
23	FRAME	G.S	4X7130-01	1	1	1	
24	GUIDE - CONNECTOR	PVC	4H5619-01	1	1	1	
25	EVAPORATOR (S-0857)	(240M2E)	208206G02	1	1	1	
	EVAPORATOR (S-0858)	(240M2E-21)	208205G02	1	1	1	
	EVAPORATOR (S-0859)	(240M2E-23)	2H1833G02	1	1	1	



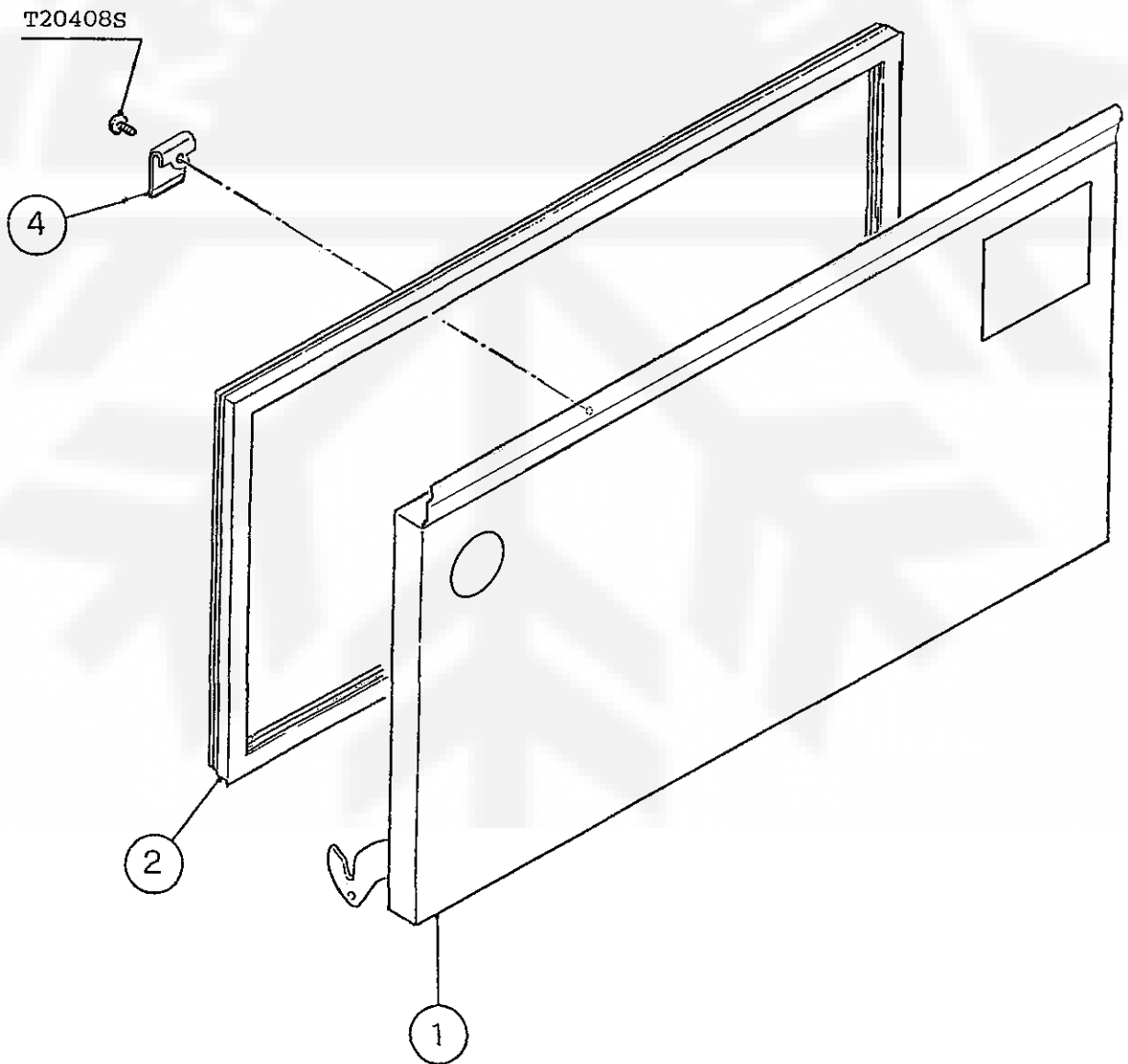


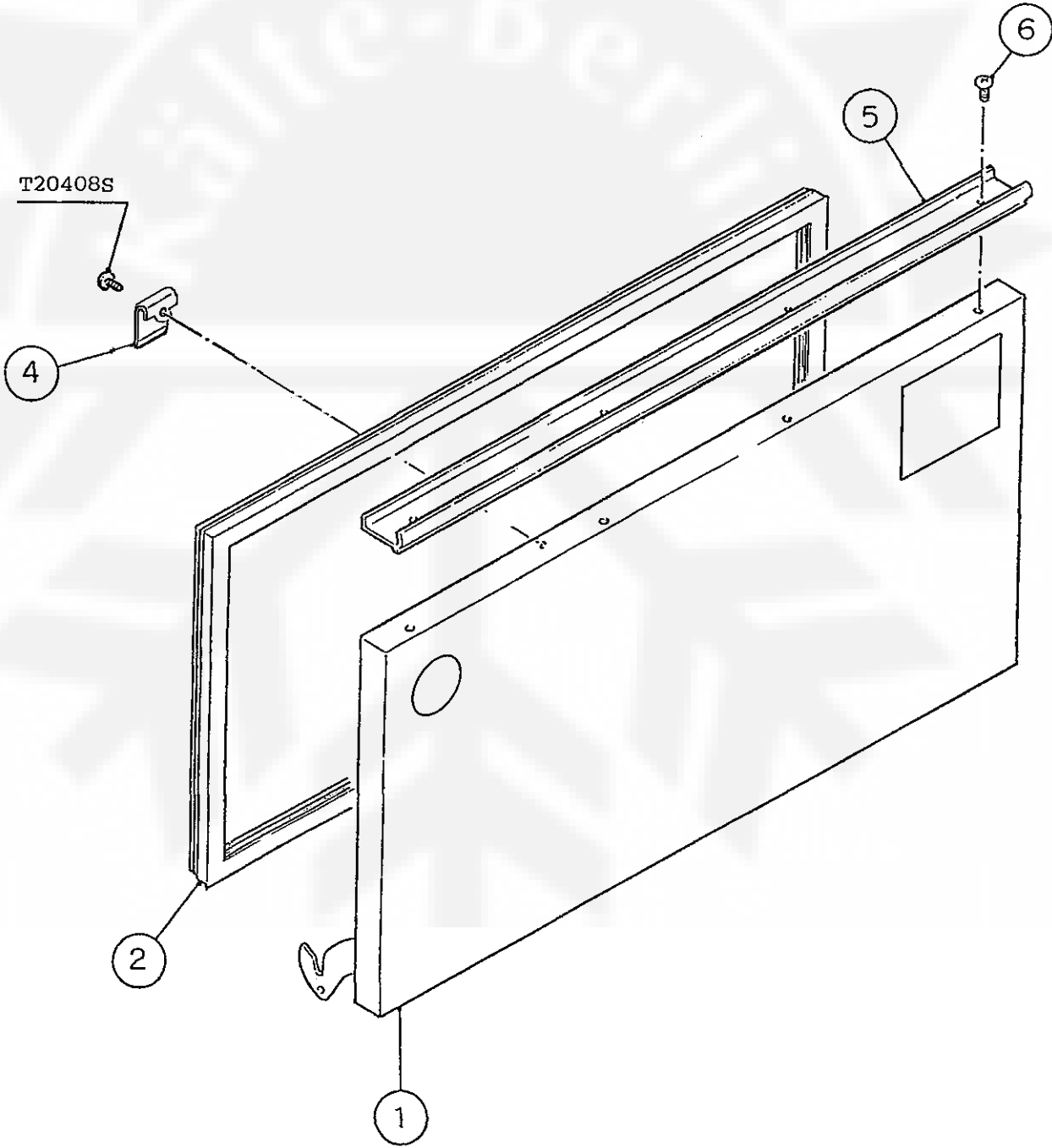
HE, GENERAL,KOREA,HSP

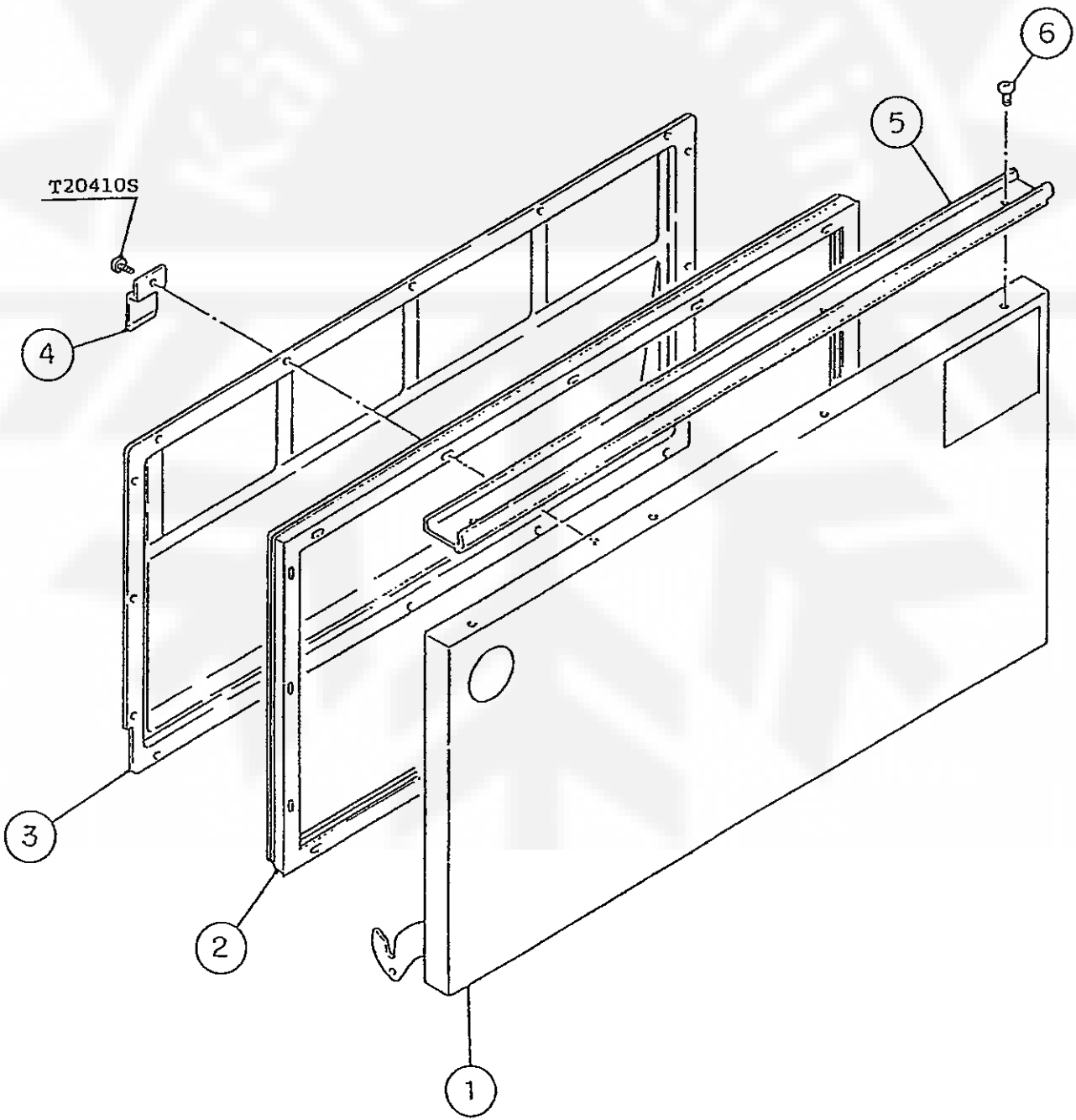
MODEL : IM-240M2E IM-240M2E-21, -23				TITLE : D. CONTROL BOX ASSY			
INDEX NO.	DESCRIPTION	MATERIAL OR MODEL NUMBER	PART NUMBER	REQ'D NUMBER			
				D-1 E-0	E-1 F-0	F-1 G-0	G-1
1	CONTROL BOX	G.S	3X6489G02	1	1	—	
		G.S	3Y1081G01			1	1
2	MAGNETIC CONTACTOR	LC1-K12016K7	461944-01	1	1	×	
3	TRANSFORMER	230V/100V	450104-01	1	1	1	1
4	CAPACITOR - ACTUATOR MOTOR	0.8 uF	456262-01	1	1	1	1
5	CAPACITOR - PUMP MOTOR	4.0 uF	416920-02	1	1	1	1
6	CUSHION	-	4H2718-01	1	1	1	1
7	SHIELD PLATE	G.S	4H2594-01	1	×		
8	SEAL TAPE	w 12 x t 3.0	2H5606-18	1	—		
			2H6764-16		1	—	
			2H7543-14			1	1
9	CONTROL BOX COVER	G.S	3X6454-01	1	1	—	
		G.S	3H9571-01			1	1
10	TIE	PRT1.5S	427466-01	1	1	1	1
11	CONTROLLER BOARD	H2AA136C03	436572-03	1	—		
		H2AE024C18	462975-18	—	1	1	1
12	SURGE ABSORBER	DSAR3FV-362M-10JLK	436573-02	1	×		
13	FUSE	218005	451924-01	1	1	1	1
14	FUSE HOLDER	CFH15	4Y2547-01	1	1	1	1
15	GROMMET	NBR	4H2568-01	1	1	1	1
16	ROCKER SWITCH	H8600VB	460681-01	1	1	1	1
17	RELAY	LY2ZF	406132-04	1	1	1	1
18	BIMETAL THERMOSTAT	ST-3L	452761-01	1	1	1	1
19	COVER - TRANSFORMER	G.S	4Y2397-01	1	1	—	
		G.S	4X4065-01			1	1
20	CONTROL BOX (R)	G.S	3X6453-01	1	1	×	
21	BRACKET - CAPACITOR	(HE)(HSP)(G50Hz)	4X4056-04			1	1
		(KOREA)(G60Hz)	4X4056-06			1	1
22	COVER(A)-CAPACITOR	ABS	4X4779-01			2	2
23	COVER(B)-CAPACITOR	ABS	4X4779-02			1	1
24	POWER RELAY	G7L-1A-TUB	449000-01			1	1

HE, GENERAL,KOREA,HSP,CHINA

MODEL : IM-240M2E IM-240M2E-21, -23				TITLE : D. CONTROL BOX ASSY			
INDEX NO.	DESCRIPTION	MATERIAL OR MODEL NUMBER	PART NUMBER	REQ'D NUMBER			
				G-2	H-1	H-2,J-0 K-0,A-0	
1	CONTROL BOX	-	-				
		G.S	3Y1081G01	1	1	1	
2	-	-	-				
3	TRANSFORMER	230V/100V	450104-01	1	1	1	
4	CAPACITOR - ACTUATOR MOTOR	0.8 uF	456262-01	1	1	1	
5	CAPACITOR - PUMP MOTOR	4.0 uF	416920-02	1	1	1	
6	CUSHION	-	4H2718-01	1	1	1	
7	-	-	-				
8	SEAL TAPE	w 12 x t 3.0	-				
			-	2H7543-14	1	1	1
9	CONTROL BOX COVER	-	-				
		G.S	3H9571-01	1	1	1	
10	TIE	PRT1.5S	427466-01	1	1	1	
11	CONTROLLER BOARD	-	-				
		H2AE024C18	462975-18	1	1	1	
12	-	-	-				
13	FUSE	218005	451924-01	1	1	1	
14	FUSE HOLDER	CFH15	4Y2547-01	1	1	1	
15	GROMMET	NBR	4H2568-01	1	1	1	
16	ROCKER SWITCH	H8600VB	460681-01	1	1	1	
17	RELAY	LY2ZF	406132-04	1	1	1	
18	BIMETAL THERMOSTAT	ST-3L	452761-01	1	1	1	
19	COVER - TRANSFORMER	-	-				
		G.S	4X4065-01	1	1	1	
20	-	-	-				
21	BRACKET - CAPACITOR	(HE)(HSP)(G50Hz)	4X4056-04	1	1	1	
		(KOREA)(G60Hz)	4X4056-06	1	1	1	
22	COVER(A)-CAPACITOR	ABS	4X4779-01	2	2	2	
23	COVER(B)-CAPACITOR	ABS	4X4779-02	1	1	1	
24	POWER RELAY	G7L-1A-TUB	449000-01	1	1	1	



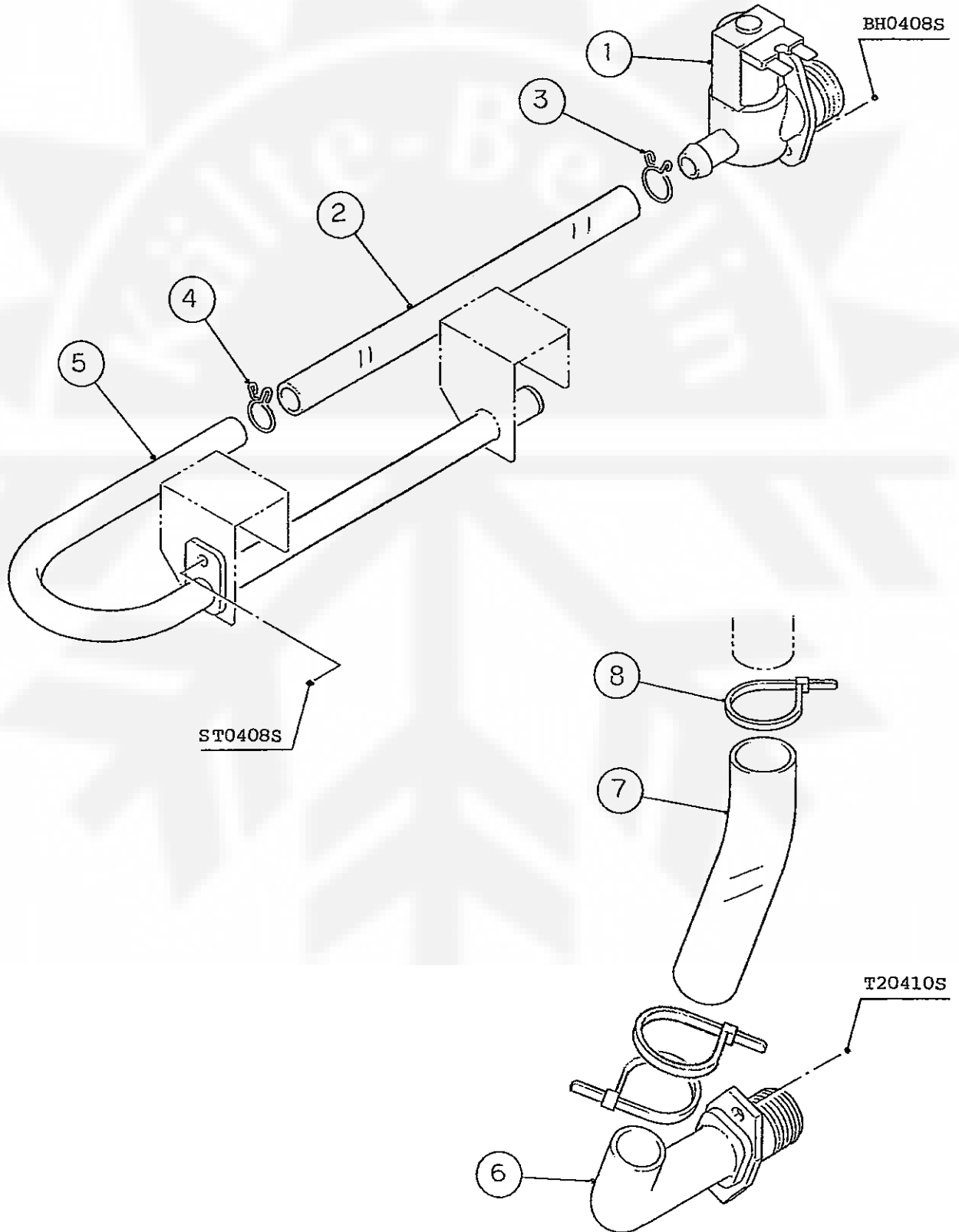


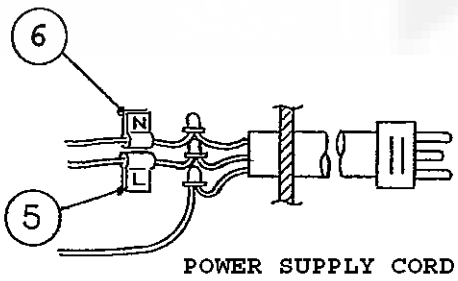
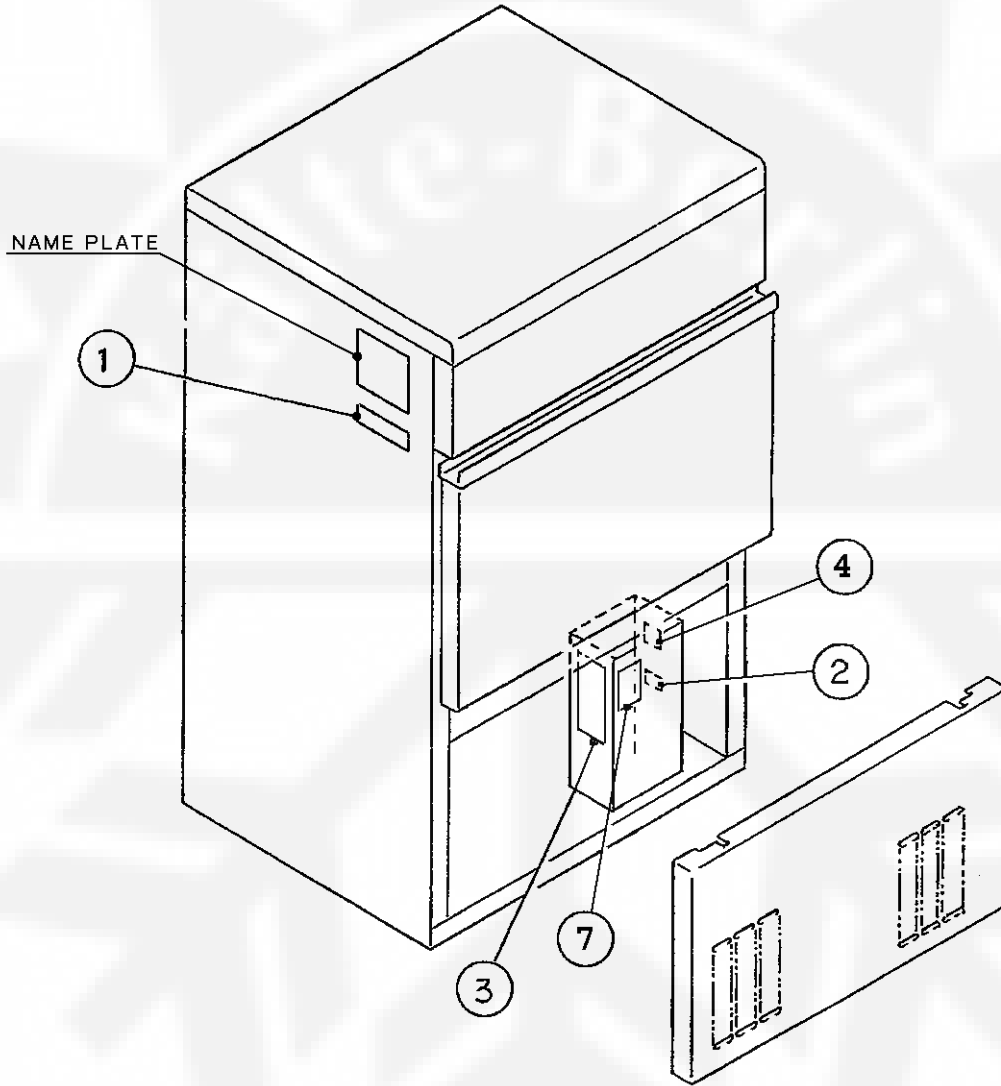


IM-240M2E
IM-240M2E-21,23

F.WATER CIRCUIT ASSY

(F-1) (G-0) (G-1) and later
(D-1) (E-0) (E-1) (F-0)

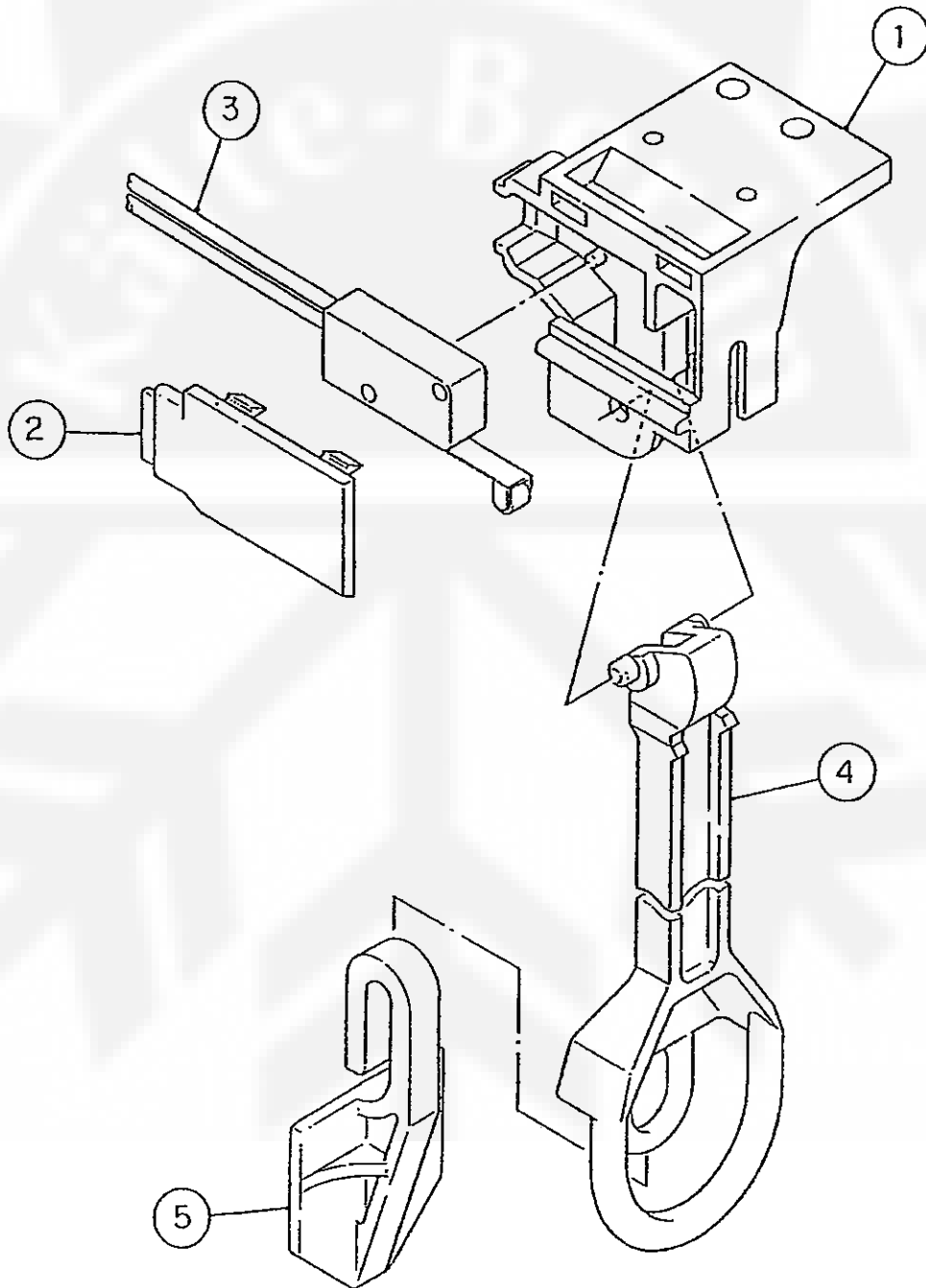




IM-240M2E
IM-240M2E-21,23

H.BIN CONTROL SWITCH ASSY

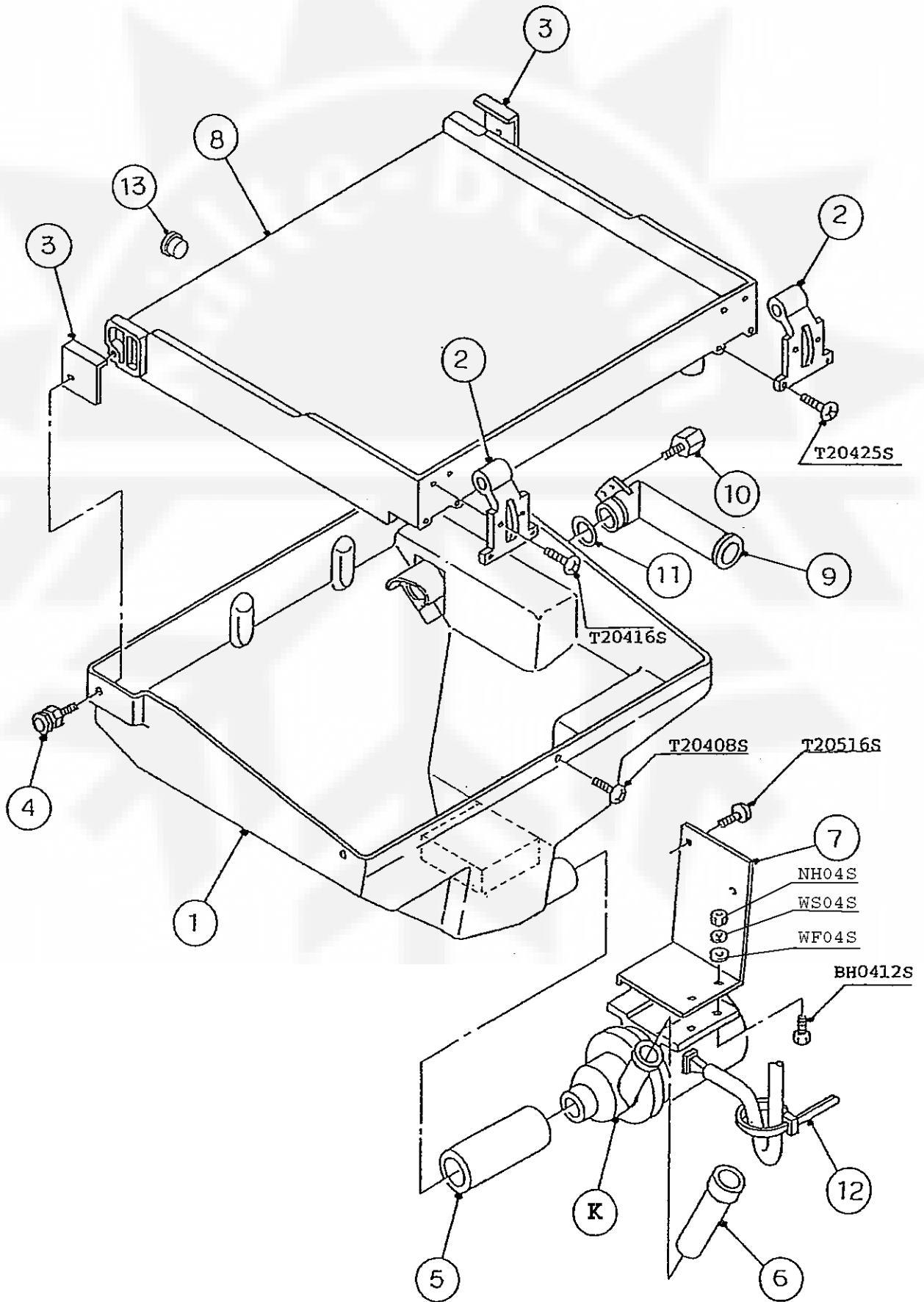
(F-1) (G-0) (G-1) and later
(D-1) (E-0) (E-1) (F-0)



IM-240M2E
IM-240M2E-21, 23

J.WATER PAN ASSY

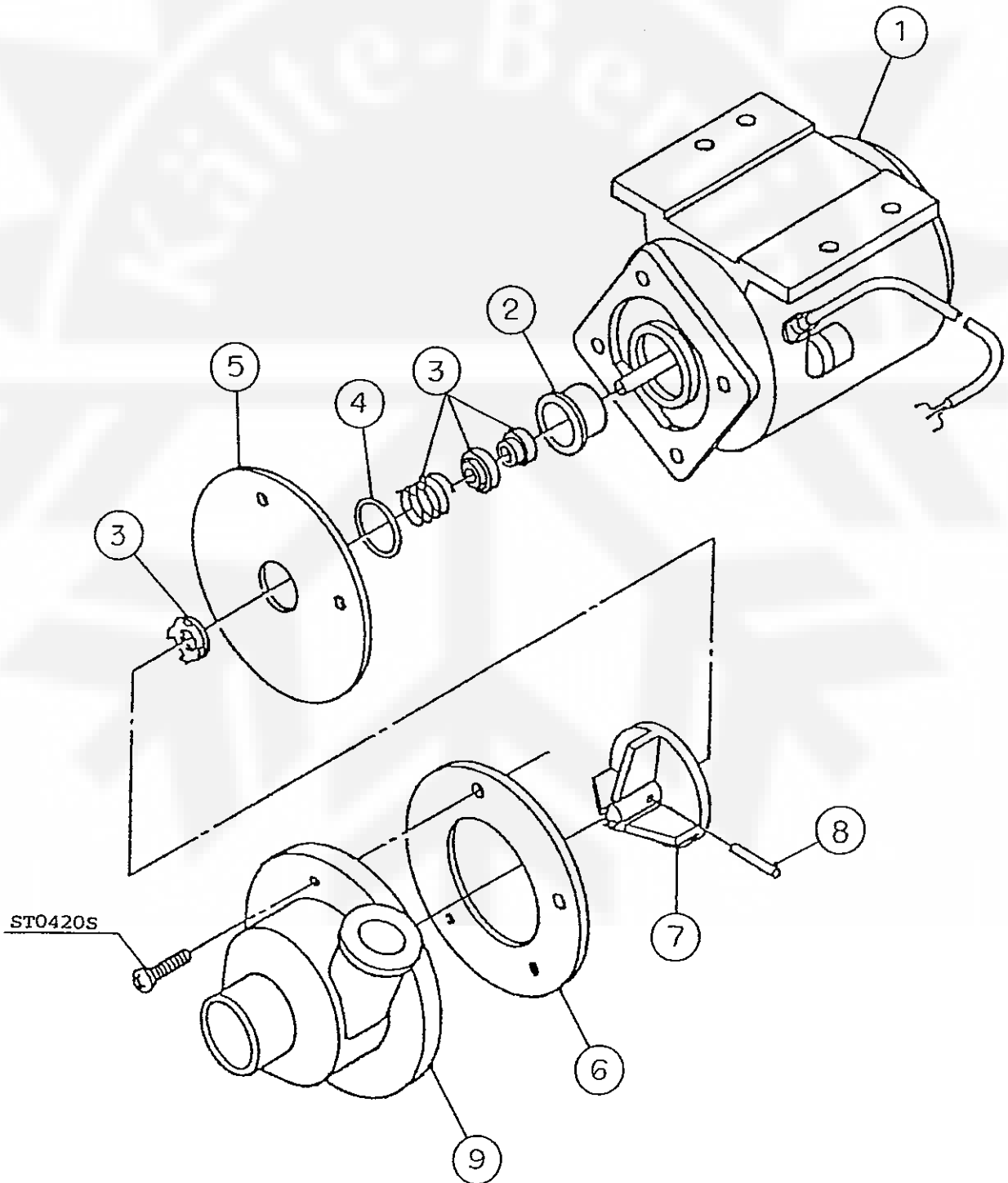
(F-1) (G-0) (G-1) and later
(D-1) (E-0) (E-1) (F-0)



IM-240M2E
IM-240M2E-21,23

K.WATER PUMP ASSY

(F-1) (G-0) (G-1) and later
(D-1) (E-0) (E-1) (F-0)



IM-240M2E
IM-240M2E-21, 23

L.ACCESSORIES

(F-1) (G-0) (G-1) and later
(D-1) (E-0) (E-1) (F-0)

