



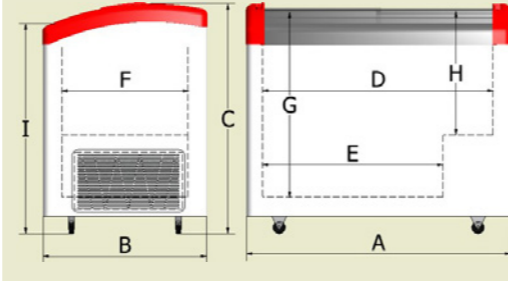
FOCUS

ICE CREAM & DISPLAY FREEZER

With the FOCUS freezer, Elcold has succeeded to design two very different parameters into one unit: Elegance but still robust. The result is an optimal way to catch the attention of your customers. The lid design, the improved insulation and the heated frame ensure minimum ice build-up.

FEATURES

- Curved lift-up glass lids
- Thermometer
- Castors
- Options:
 - Baskets or plastic food buckets
 - Dividers for baskets
 - LED
 - Graphics (minimum quantity required)
 - Castors with brake



Dimensions according to technical data below



FOCUS 73 GREY



FOCUS 106 BLUE



FOCUS 131 RED



LED LIGHT FOR FOCUS



FOCUS 151 RED



FOCUS 171 BLUE

THINK GREEN

SAVE UP TO 30% ENERGY

TYPICAL CONFIGURATION OF VENTILATION GRIDS



Ventilation grid with digital thermometer

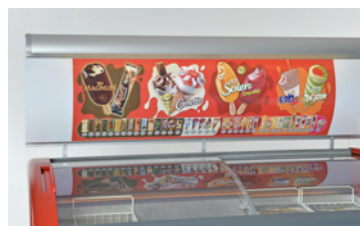
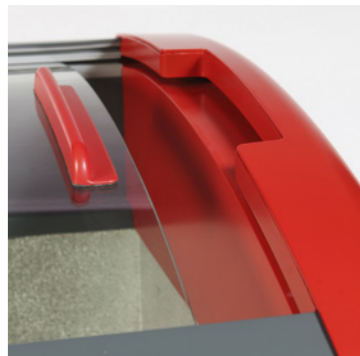


Standard ventilation grid

Heavy investment in new technology has resulted in very low energy consumption and use of the environmental friendly hydro carbon gas. Cyclopentane is used as blowing agent.

	FOCUS 73	FOCUS 106	FOCUS 131	FOCUS 151	FOCUS 171
CLIMATE CLASS					
	B (former "4+")	B (former "4+")	B (former "4+")	B (former "4+")	C (former "5+")
VOLUME					
Gross volume, litres	161	270	352	418	484
Net volume, litres	113	193	254	302	351
TEMPERATURE					
Ambient temperature range, deg. C	+16 to +35	+16 to +35	+16 to +35	+16 to +35	+16 to +35
Temperature range inside unit, deg. C	-16 to -23	-16 to -23	-16 to -23	-16 to -23	-16 to -23
COOLING DATA					
Refrigerant	R290	R290	R290	R290	R290
Refrigerant amount	67	75	80	96	94
Type of cooling	Static	Static	Static	Static	Static
Type of defrost	Manual	Manual	Manual	Manual	Manual
ENERGY					
Energy consumption / 24 h kwh at 30 deg. C	1,08	1,54	1,68	1,94	2,57
AE- Annual Energy consumption, kwh	394	561	615	709	937
EEL- Energy Efficiency Index	34,00%	39,30%	37,30%	38,90%	46,90%
EC-Energy Class	C	D	D	D	D
Input power (watt)	141	153	203	204	230
ELECTRICAL DATA					
Power	220-240 v/50Hz	220-240 v/50Hz	220-240 v/50Hz	220-240 v/50Hz	220-240 v/50Hz
Power 110volt / 60 hz	Optional	Optional	Optional	Optional	Optional
Current consumption (ampere)	4	4	4	4	4
DIMENSIONS					
External dimensions (wxdxh)	726*656*850	1056*656*850	1306*656*850	1506*656*850	1706*656*850
Internal dimensions (wxdxh)	570*500*670	900*500*670	1150*500*670	1350*500*670	1550*500*670
Dimension A	726	1056	1306	1506	1706
Dimension B	656	656	656	656	656
Dimension C	850	850	850	850	850
Dimension D	570	900	1150	1350	1550
Dimension E	370	700	950	1150	1350
Dimension F	500	500	500	500	500
Dimension G	670	670	670	670	670
Dimension H	420	420	420	420	420
Dimension I	760	760	760	760	760
Insulation (mm)	75	75	75	75	75
STANDARD					
Outer cabinet	White Galv. Steel	White Galv. Steel	White Galv. Steel	White Galv. Steel	White Galv. Steel
Inner cabinet	Aluminium	Aluminium	Aluminium	Aluminium	Aluminium
Insulation	Polyurethane	Polyurethane	Polyurethane	Polyurethane	Polyurethane
Thermometer	Digital	Digital	Digital	Digital	Digital
Thermostat	Mechanical	Mechanical	Mechanical	Mechanical	Mechanical
Castors	Incl.	Incl.	Incl.	Incl.	Incl.
OPTIONS					
Max. number of baskets (narrow)	3	4	6	7	8
Max number of baskets (wide)	2	4	5	6	7
Dividers	Optional	Optional	Optional	Optional	Optional
Castors w. brakes	Optional	Optional	Optional	Optional	Optional
Lock	Optional	Optional	Optional	Optional	Optional
Internal light	Optional	Optional	Optional	Optional	Optional
Graphics	Optional	Optional	Optional	Optional	Optional
OTHER DATA					
CE (EU) / UL (USA)	Yes	Yes	Yes	Yes	Yes
WEIGHT					
Net weight, kg	44	54	62	68	73
Gross weight, kg	47	58	66	73	79
SHIPPING					
20' cont. Capacity	42	30	24	20	18
40' cont. Capacity	90	64	50	44	40
40' HC cont. Capacity	135	96	75	66	59
Standard Trailer capacity	153	108	90	75	66

*) Climate class 4 has been changed into Climate class A according to the new EU regulation.
 *) Climate class 7 has been changed into Climate class B according to the new EU regulation.
 *) Climate class 5 has been changed into Climate class C according to the new EU regulation.



S-DISPLAY