 II 3G Ex nA nC nL IIB
TÜV 08 ATEX 354663 X



BioBlood 600/660W

BioBlood cabinets also provide users with an excellent view of the contents. A glass door lets you see at a glance what is inside the cabinet, making checking and access both quicker and easier.

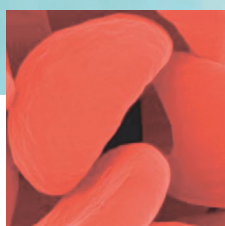
Available in either white or stainless steel finish, with well-insulated glass or solid doors.



BioBlood BR 660W.
Drawers and chart recorder are optional extras.

Biostorage you can depend on

Gram Commercial A/S
Aage Grams Vej 1
DK- 6500 Vejens
Tel: +45 73 20 13 00
Fax: +45 73 20 12 01
info@gram-bioline.com
www.gram-bioline.com

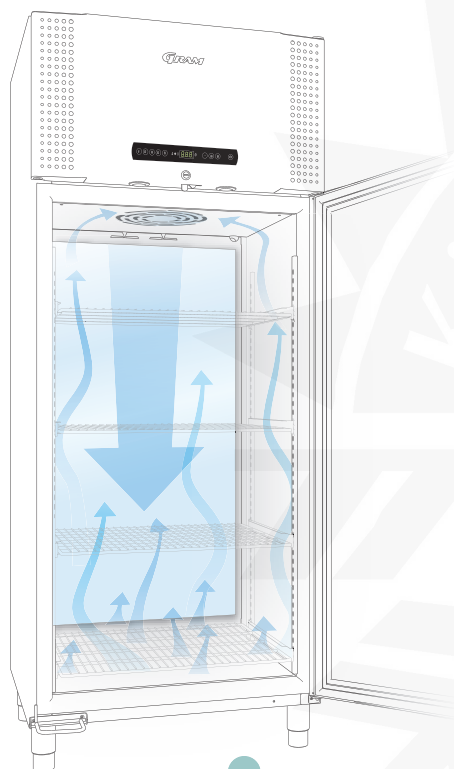


Top panel with BioBlood control unit

The MPC unit is specially developed for users of storage cabinets in the BioBlood range. Among its many features are acoustic temperature and door alarms, and a voltage-free contact for monitoring systems and/or remote alarms. The display can be locked. An integrated Gram monitor, for providing documentation for the internal cabinet, is fitted on the control.



BioBlood 600/660W



Access port

24.5 mm port for ease of access, e.g. sensors for external temperature surveillance.

E-sensor

Extra sensor and reference container for providing a temperature reference within the storage compartment.

Shelves and drawers

A wide range of versatile interior fittings and layouts is available. The operating specifications and the interior layout can both be customised.

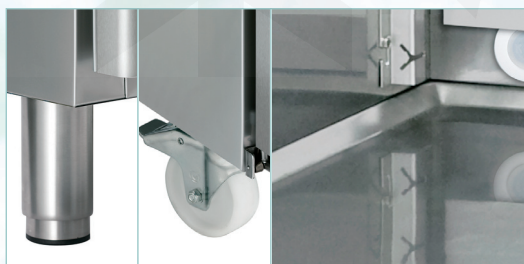
Technical specifications	BioBlood BR600/660W	BioBlood BF600/660W
Temperature range	2/6 °C	-5/-25 °C
Ambient temperature range	10/40 °C	
Control unit	Gram BioLine MPC 4.6, voltage-free contact, E-sensor, acoustic door and temperature alarms that can be programmed individually, alarm recording, dry cool function (BR) and calibration function.	
Material interior	Stainless steel	
Material exterior	Lacquered steel or stainless steel	
Dimensions mm (W x D x H)	600W: 815 x 756 x 2010* / 660W: 815 x 756 x 2160	
Gross volume	600W: 600 litres/21.2 cubic feet / 660W: 660 litres/23.3 cubic feet	
Net volume	600W: 432 litres/15.3 cubic feet / 660W: 484 litres/17.0 cubic feet	
Modules for shelves and drawers	600W: Shelves 24 - Drawers 12 / 660W: Shelves 27 - Drawers 13	
Insulation (mm)	60 mm (cyclopentane)	
Refrigerant	R290 / R134a	R290 / R404A
Base	Legs**	
Connection	230 V, 50 Hz	
Noise level (DbA)	ER600: 44.8 / ER660: 44.7 (R290)	RF600: 45.8 / RF660: 49.3 (R290)
Refrigeration capacity at -10 °C	R290 389 Watt / R134a 314 Watt	
Refrigeration capacity at -25 °C	R290 475 Watt / R404a 568 Watt	
Air system	Ventilated Gram distribution system	
Defrost system	Smart defrost (fan and electric defrost element)	Smart defrost (electric defrost element)

* Available in height less than 2000 mm

** The cabinets can also be delivered with castors or for mounting on a plinth at no extra charge

Air distribution

The unique Gram air distribution system makes sure the temperature inside the cabinet remains stable at all times, while using the minimum amount of energy.



Castors and legs Stainless steel interior

Castors, legs or plinth-mounting are available as optional extras. The internal sides and bottom as well as shelf and drawer brackets and support rails are made of stainless steel.

bioline