

@Á\ • @ ä äö\ & ^) ä\!ÁK

Sè\cÈÖ\!ä
Ö\ Á\ ä\ ä\!ÁF
FGÈJÁÖ\!ä
Ö\ } KÈI JÁÈÁ\ ÁÈÁ ÈÁG
Ö\ } KÈI JÁÈÁ\ ÁÈÁ ÈÁF
T ä\ ä\ } Ö\ ä\ cÈä\!ä Èä^
Qc\! ^cÄ , , È ä\ cÈä\!ä È\ {

No.	F053-3352
ISSUED:	JUN. 28,2010
REVISED:	APR. 20,2011
SERVICE INFORMATION	



**HOSHIZAKI
MODULAR FLAKER**

MODEL FM-300AFE-HC(N)

PARTS LIST
(HE)

AUXILIARY CODE

U - 1

The auxiliary code is the first two characters in the serial number. The first character indicates the production year. Years progress or regress in alphabetical order. The series of letters and skipped letters depend on UL listing, production, and model. See the auxiliary code(s) and corresponding year(s) on the front cover.

The second character indicates significant part changes within the same year. Base is "1" and this number advances for each change. If there is no significant part change at the turn of the year, this number starts from "0."

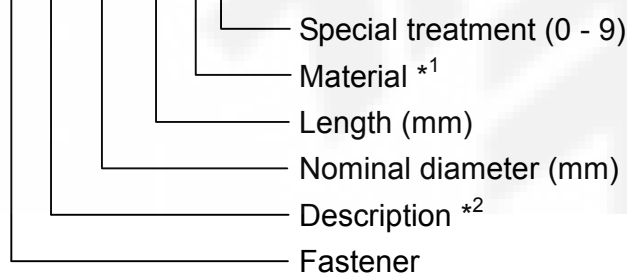
MARKS LOCATED UNDER THE AUXILIARY CODE

- = Part deleted.
- x = Part deleted and replaced by "o" part.
- o = New part in place of "x" part.

FASTENER PART NUMBER

SCREWS

E S T 0 3 0 6 F 0

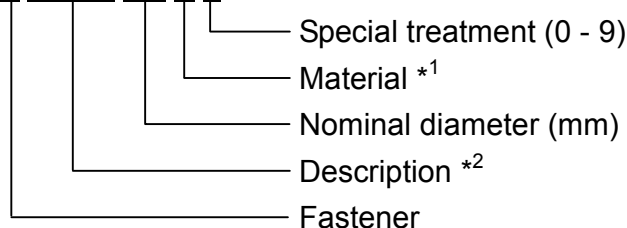


*¹ Material

- F: Steel
- S: Austenitic stainless steel
- M: Martensitic stainless steel
- B: Copper alloy
- P: Polycarbonate
- N: Polyamide
- V: PVC
- A: ABS
- X: Polyacetal
- L: Aluminum

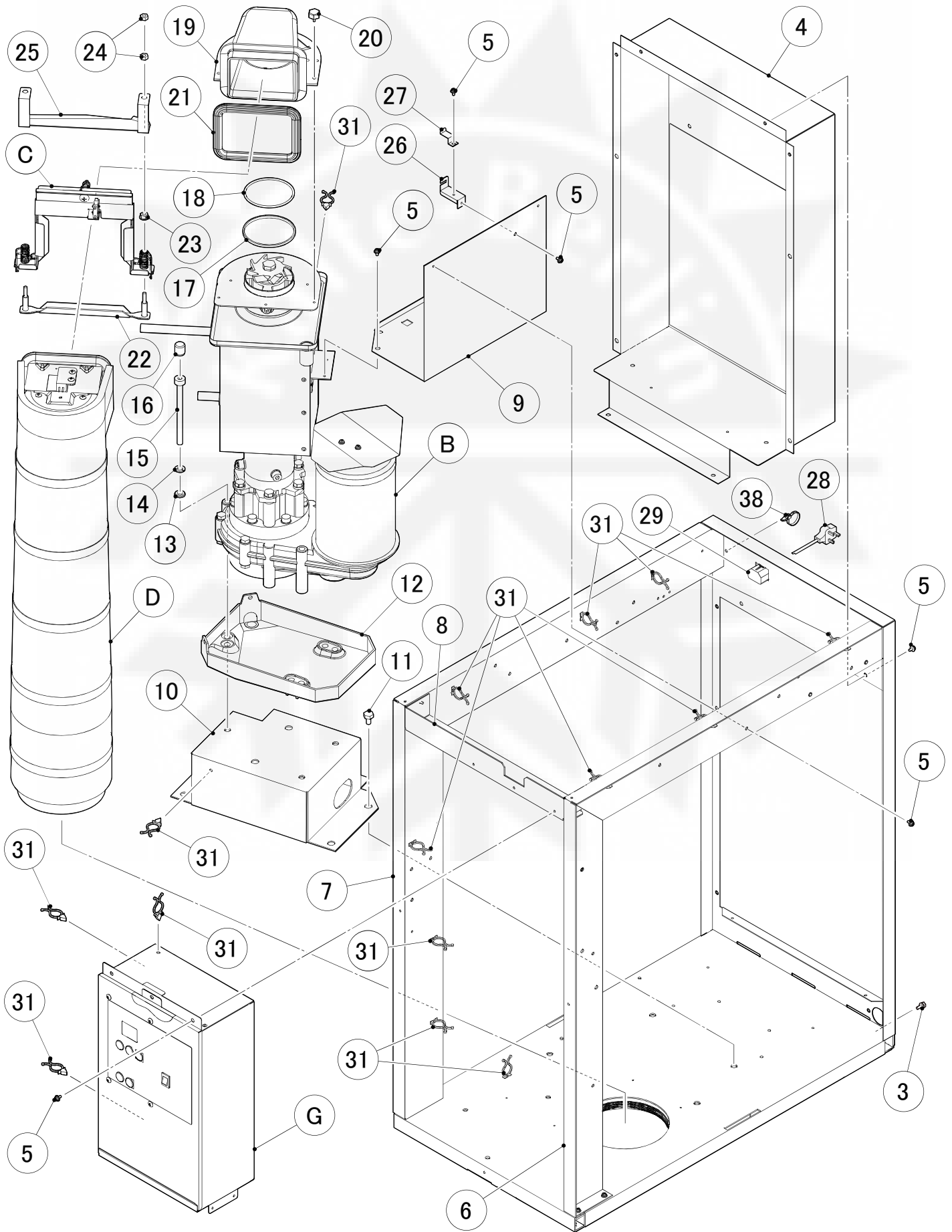
NUTS & WASHERS

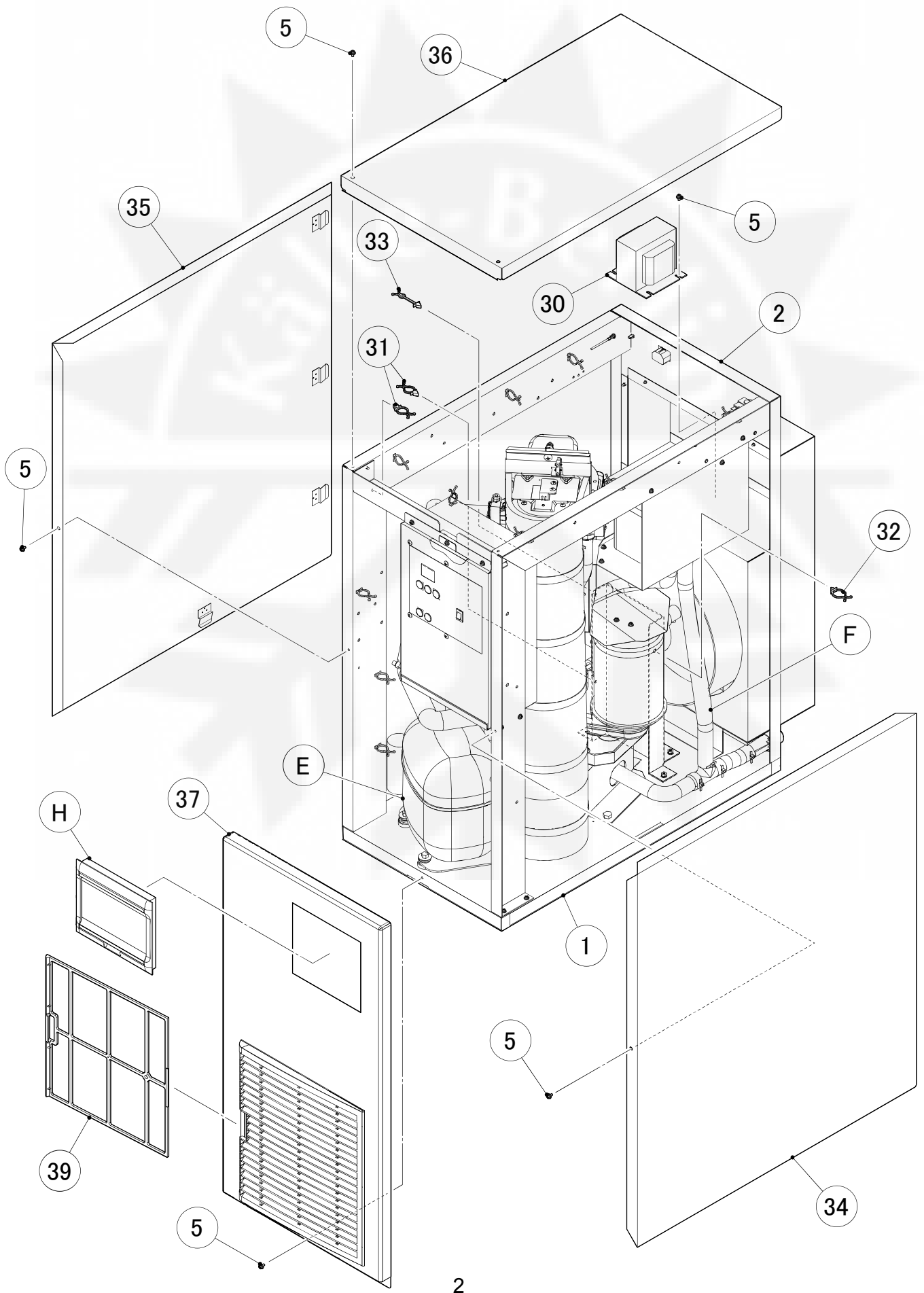
F W S P 0 5 S 0



*² Description

- First letter
- S: Machine screw
- T: Tapping screw
- M: Wood screw
- B: Bolt
- W: Washer
- N: Nut



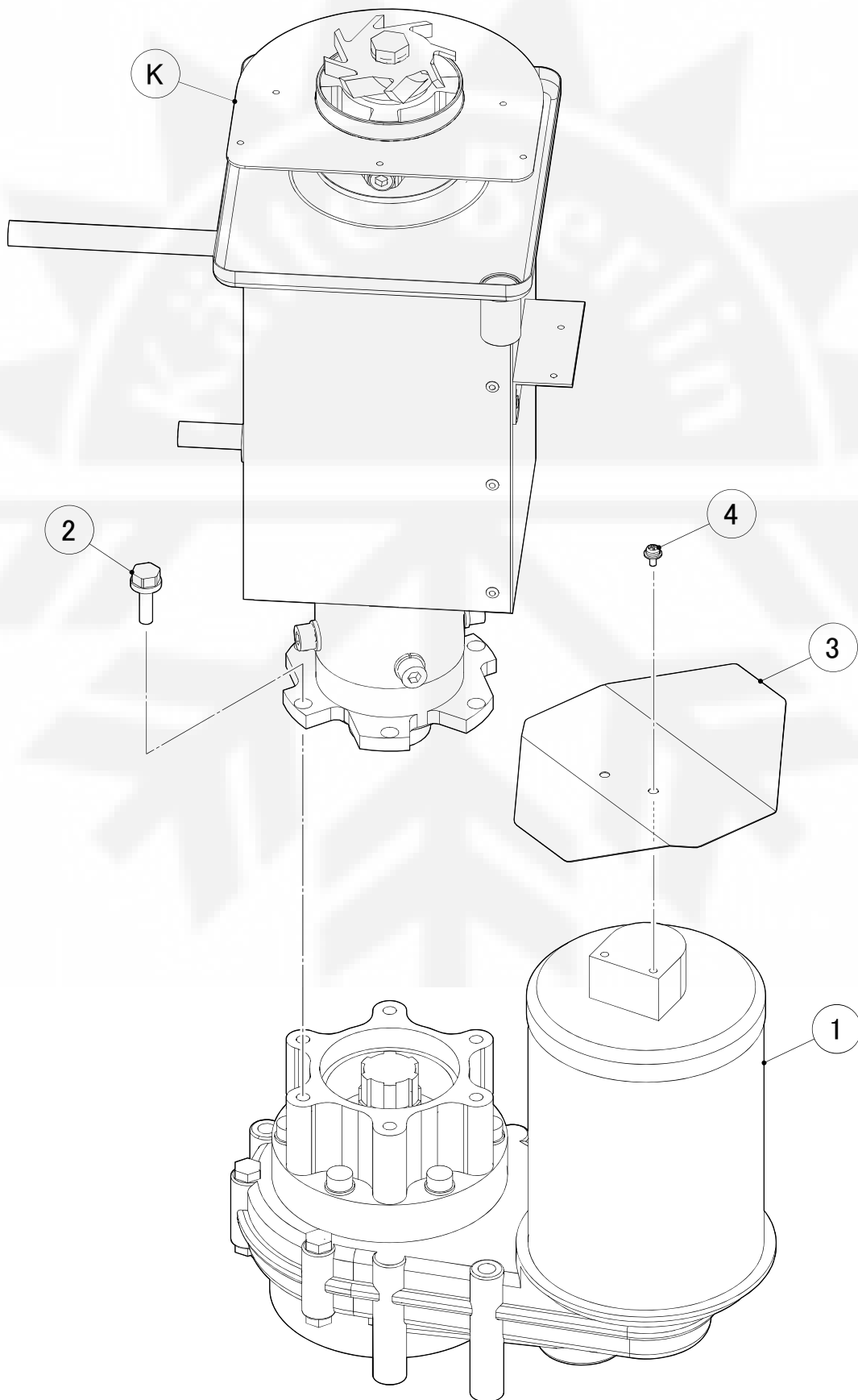


HE

MODEL: FM-300AFE-HC(N)		TITLE: A. ICE FLAKER ASSY					
INDEX NO.	DESCRIPTION	MATERIAL OR MODEL NUMBER	PART NUMBER	REQ'D NUMBER			
				K-1			
B	ICE MAKING UNIT	FM-300AFE-HC	374262A01	1			
		FM-300AFE-HCN	374262001	1			
C	BAND ASSY	S-9165	348911A01	1			
D	CHUTE ASSY		113006A01	1			
E	REFRIGERATION UNIT		120896A01	1			
F	WATER CIRCUIT		120897A01	1			
G	CONTROL BOX ASSY		258967A01	1			
H	WINDOW PANEL ASSY		348243A03	1			
J	LABEL LOCATION		258989A01	1			
M	ACCESSORIES		A02189-01	1			
N	OPTIONAL PARTS		OPT-F053	1			
1	BOTTOM PANEL		258965G01	1			
2	REAR PANEL		258966M01	1			
3	HEX HEAD BOLT W/WASHER [SW]		FBK0512S0	2			
4	REAR PANEL G/B		374271G01	1			
5	PAN HEAD SCREW W / WASHER (S		FSK0408S0	47			
6	SIDE FRAME (R)		116720-01	1			
7	SIDE FRAME (L)		115584-01	1			
8	FRONT FRAME		374259M01	1			
9	BRACKET - RESERVOIR		374260M01	1			
10	BRACKET - GEAR MOTOR		374261G01	1			
11	HEX HEAD BOLT		FBH0812S0	5			
12	DRAIN PAN		323765G01	1			
13	SEAL WASHER		458299-01	3			
14	SPLIT LOCK WASHER		FWSP08S0	3			
15	HEX. SOCKET HEAD CAP SCREW SUS 8×110		461285-01	3			
16	VINYL CAP		451272-01	3			
17	RING		432661-02	1			
18	O RING		7616-G070	1			
19	SPOUT		104797-01	1			
20	THUMB SCREW		415949G04	3			
21	PACKING		454256-01	1			

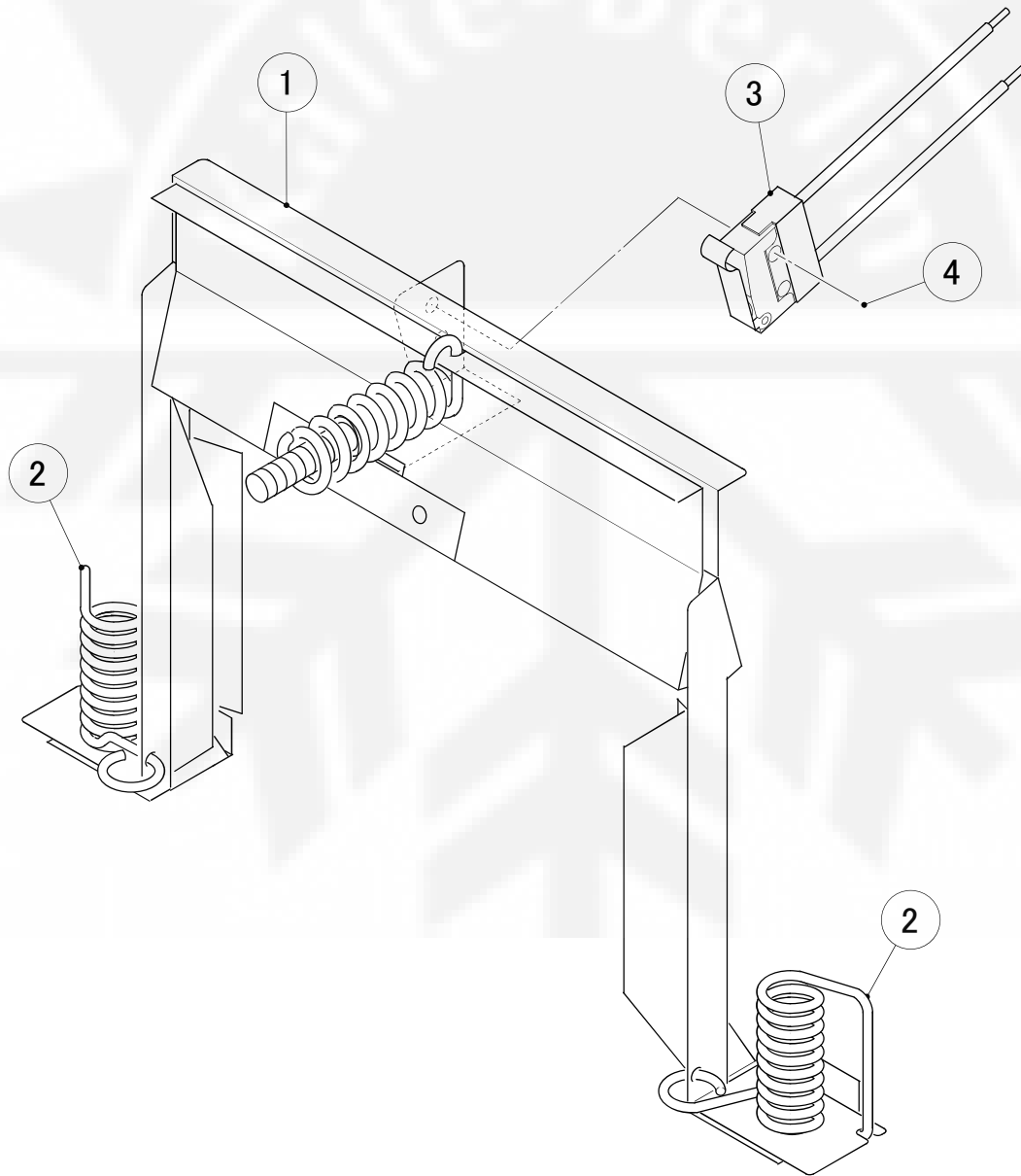
HE

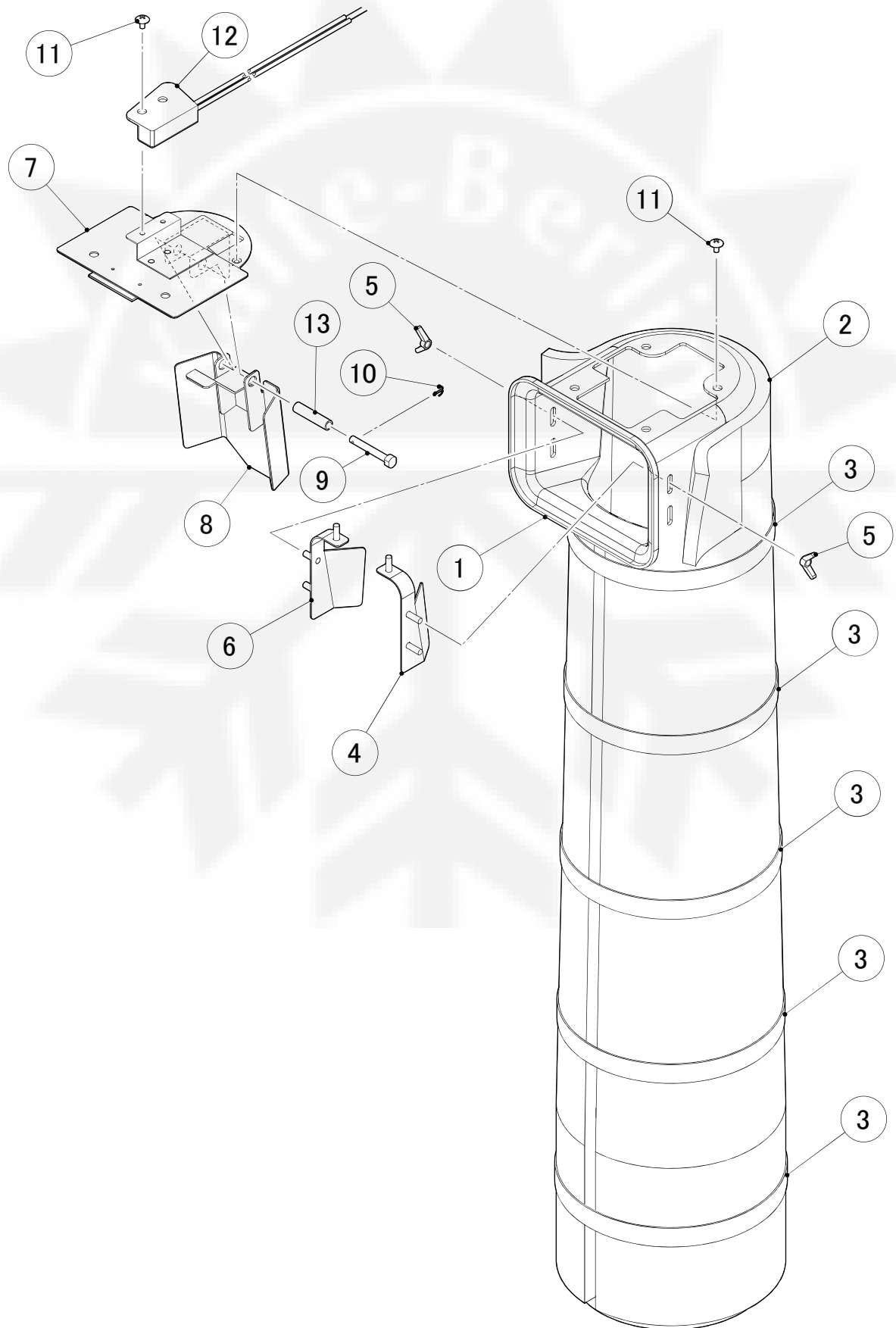
MODEL: FM-300AFE-HC(N)		TITLE: A. ICE FLAKER ASSY					
INDEX NO.	DESCRIPTION	MATERIAL OR MODEL NUMBER	PART NUMBER	REQ'D NUMBER			
				K-1			
22	BAND (B)		459995G01	1			
23	FLANGE NUT		FNHF06S0	3			
24	HEX NUT		FNH106S0	5			
25	DRIP GUIDE		350725-01	1			
26	BRACKET - WATER SUPPLY		475123M01	1			
27	BRACKET (A) - WATER SUPPLY		474638M01	1			
28	POWER CORD	UK Plug	P00241-01	1			
29	CONNECTOR		P00245-02	1			
30	TRANSFORMER		469405-01	1			
31	CLAMP	No.4253	427902-05	17			
32	CLAMP	No.2674	427902-02	1			
33	CLAMP	No.2047	427902-08	1			
34	SIDE PANEL (R)		234109G01	1			
35	SIDE PANEL (L)		234110G01	1			
36	TOP PANEL		258968M01	1			
37	FRONT PANEL		374272G01	1			
38	PUSH MOUNT TIE		436156-01	1			
39	AIR FILTER		2A2062G01	1			

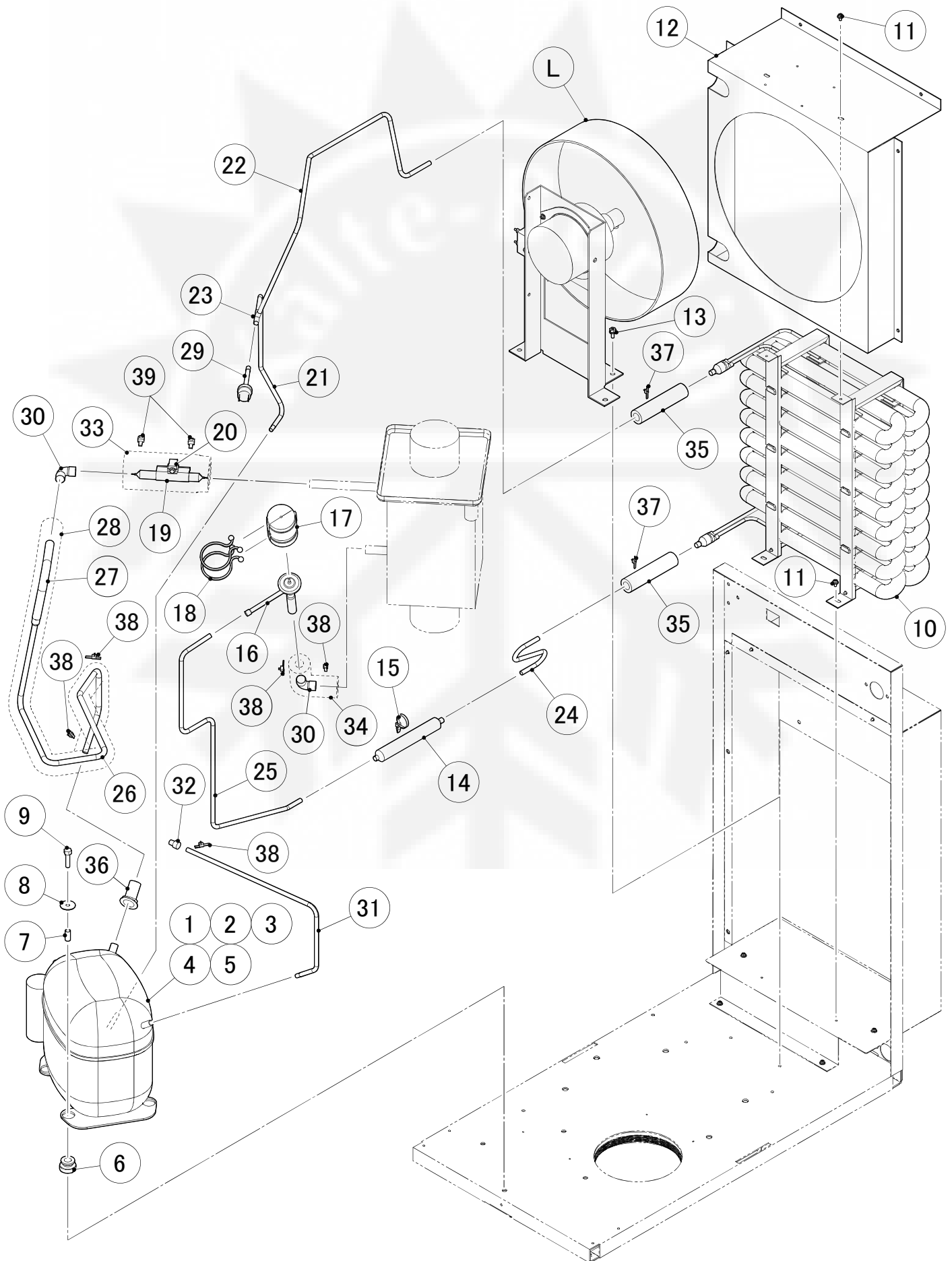


HE

MODEL: FM-300AFE-HC(N)				TITLE: B. ICE MAKING UNIT			
INDEX NO.	DESCRIPTION	MATERIAL OR MODEL NUMBER	PART NUMBER	REQ'D NUMBER			
				K-1			
K	EVAPORATOR ASSY	FM-300AFE-HC	258972A01	1			
		FM-300AFE-HCN	258972001	1			
1	GEAR MOTOR		466223-01	1			
2	HEX HEAD BOLT W/WASHER(SW)		461888-01	6			
3	COVER - GEAR MOTOR		475127M01	1			
4	PAN HEAD SCREW W / WASHER (SW)		FSK0408S0	2			





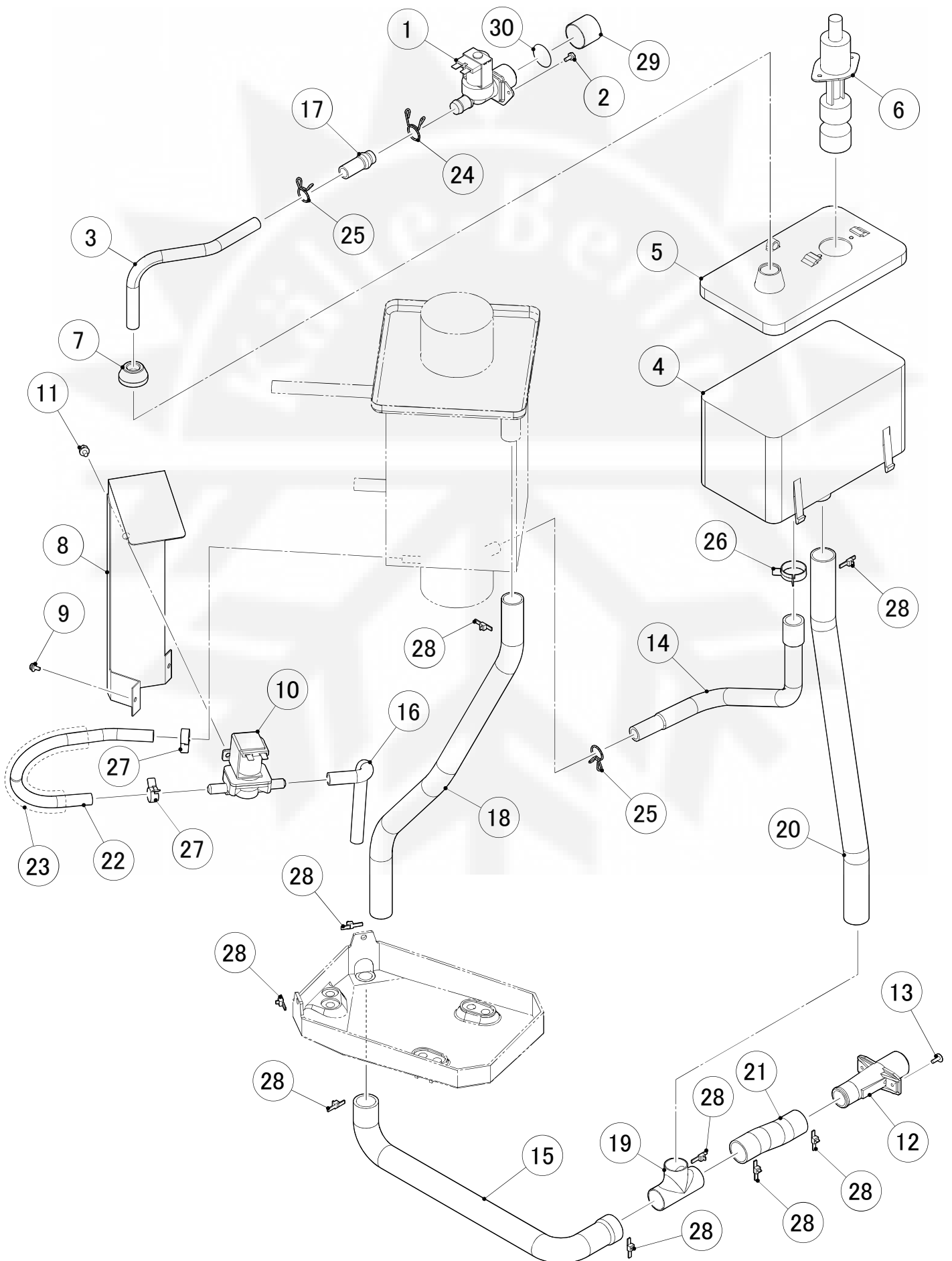


HE

MODEL: FM-300AFE-HC(N)		TITLE: E. REFRIGERATION UNIT					
INDEX NO.	DESCRIPTION	MATERIAL OR MODEL NUMBER	PART NUMBER	REQ'D NUMBER			
				K-1			
L	FAN MOTOR ASSY		374264A01	1			
1	COMPRESSOR		P01908-01	1			
2	START RELAY		P01909-01	1			
3	START CAPACITOR		456350-01	1			
4	CORD RELIEF		452239-01	1			
5	COVER		459924-01	1			
6	RUBBER GROMMET		4A1452-01	4			
7	SLEEVE		4A1451-01	4			
8	WASHER		4A1450-01	4			
9	BOLT		4A1459-01	4			
10	CONDENSER ASSY		258979G01	1			
11	PAN HEAD SCREW SW		FSK0408S0	4			
12	SHROUD		258980M01	1			
13	HEX HEAD BOLT SW		FBK0512S0	4			
14	DRIER		462813-01	1			
15	PUSH MOUNT TIE		436156-01	1			
16	EXPANSION VALVE		P01626-01	1			
17	COVER - EXPANSION VALVE		3Y3196P01	1			
18	CLAMP		P00752-01	2			
19	HOLDER - EXP. VALVE 1/2		3A0112-01	1			
20	CLAMP		443461-01	1			
21	COPPER TUBE (A1) - HIGH SIDE	COPPER TUBE (A) - HIGH SIDE 258983G01	258983M01	1			
22	COPPER TUBE (A2) - HIGH SIDE	COPPER TUBE (A) - HIGH SIDE 258983G01	258983M02	1			
23	TEE 6.4	COPPER TUBE (A) - HIGH SIDE 258983G01	417394-01	1			
24	COPPER TUBE (B) - HIGH SIDE		374273M01	1			
25	COPPER TUBE (C) - HIGH SIDE		258984M01	1			
26	COPPER TUBE (D1) - LOW SIDE	COPPER TUBE (D) - LOW SIDE 258985G01	258985M01	1			

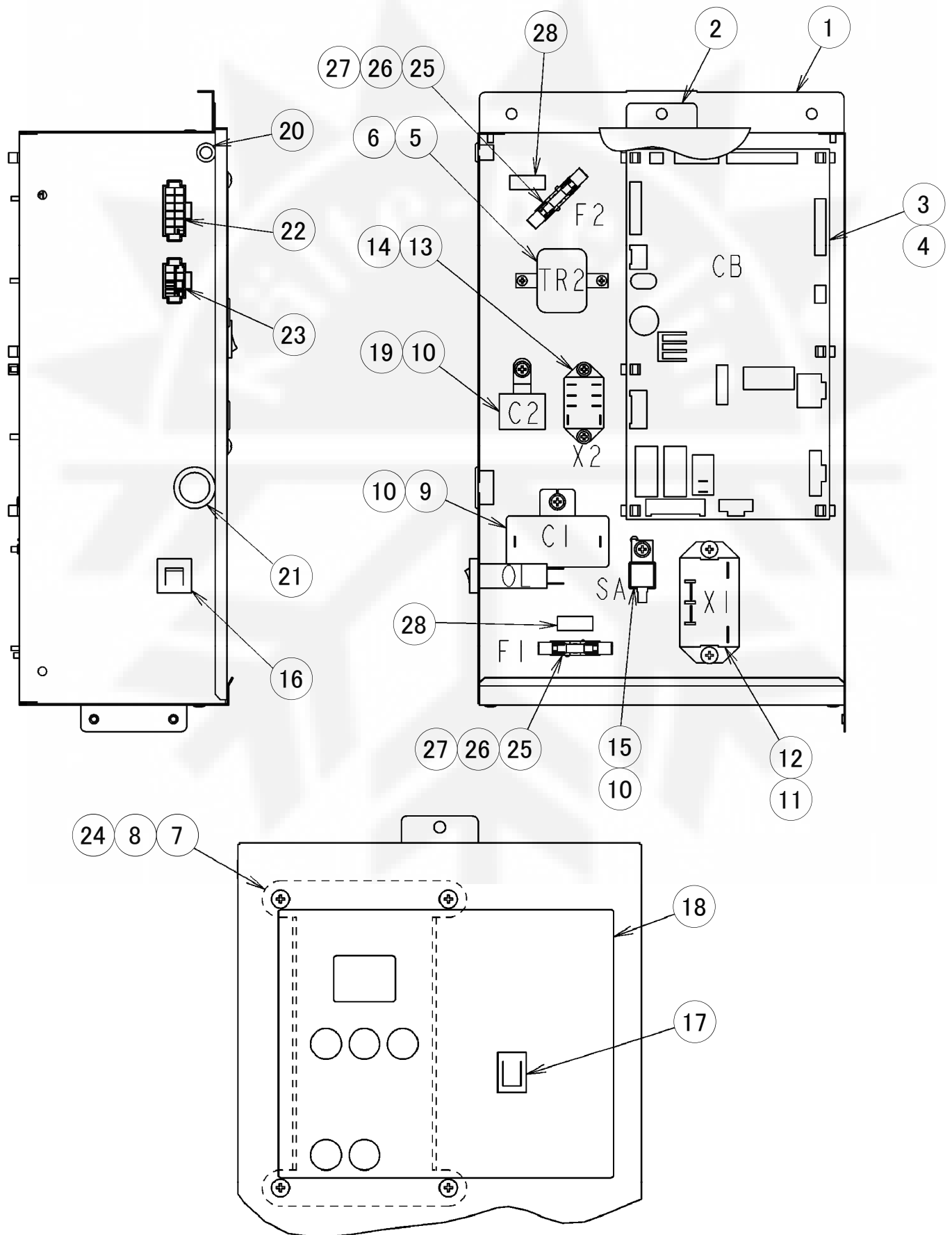
HE

MODEL: FM-300AFE-HC(N)				TITLE: E. REFRIGERATION UNIT			
INDEX NO.	DESCRIPTION	MATERIAL OR MODEL NUMBER	PART NUMBER	REQ'D NUMBER			
				K-1			
27	COPPER TUBE (D2) - LOW SIDE	COPPER TUBE (D) - LOW SIDE 258985G01	258985M02	1			
28	INSULATION TUBE	COPPER TUBE (D) - LOW SIDE 258985G01	H71333H10	1			
29	PRESSURE SWITCH	R290	459868-05	1			
30	ELBOW		417395-03	2			
31	COPPER TUBE (E) - LOW SIDE		475128M01	1			
32	LOCKRING STOPPER		P01677-01	1			
33	INSULATION TUBE		H73858B13	1			
34	INSULATION TUBE		H71333B13	1			
35	INSULATION TUBE		H71323B10	2			
36	RUBBER SHEET		446470-01	1			
37	TIE	CV-100	7920-0002	2			
38	TIE	CV-150	7920-0003	5			
39	TIE	CV-300	7920-0028	2			



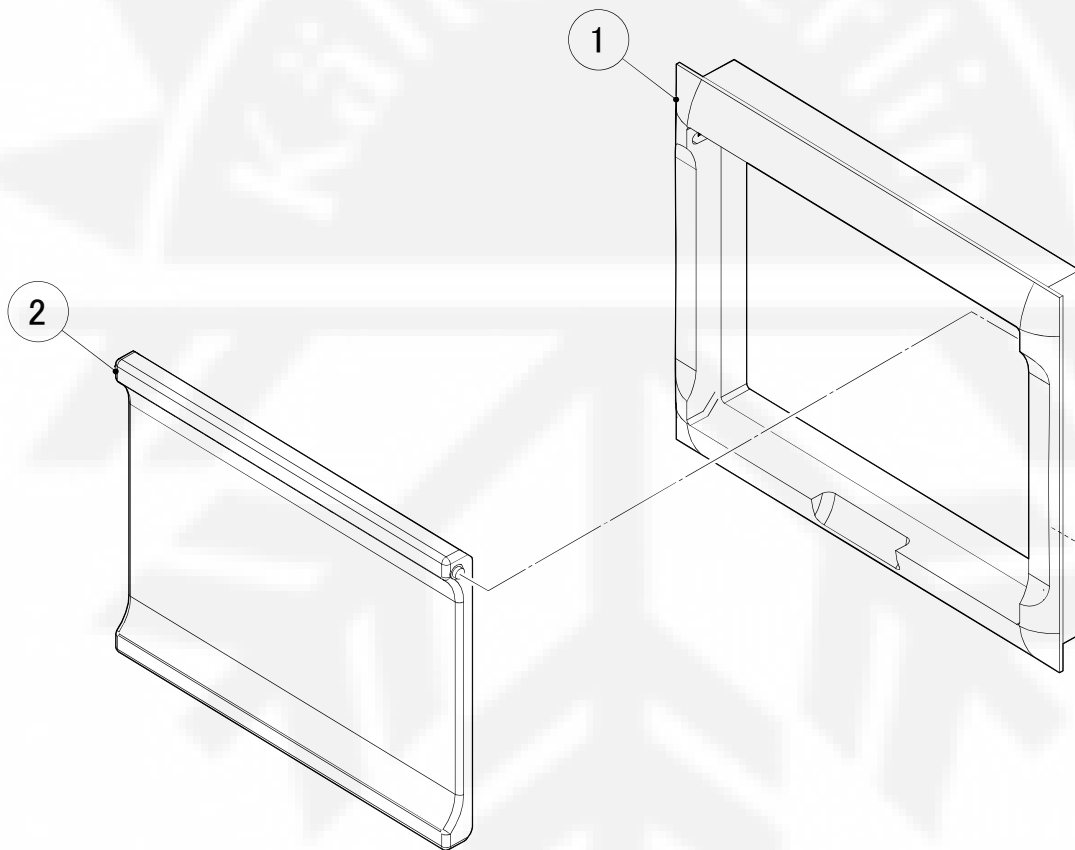
HE

MODEL: FM-300AFE-HC(N)					TITLE: F. WATER CIRCUIT			
INDEX NO.	DESCRIPTION	MATERIAL OR MODEL NUMBER	PART NUMBER	REQ'D NUMBER				
				K-1				
1	WATER VALVE		452993-01	1				
2	HEX HEAD SCREW		FBH0408S0	2				
3	PIPE - WATER SUPPLY		475125M01	1				
4	RESERVOIR		232626-01	1				
5	RESERVOIR COVER		232627-01	1				
6	FLOAT SWITCH		458279-01	1				
7	COVER - RESERVOIR INLET		415094-01	1				
8	BRACKET - VALVE		374268M01	1				
9	PAN HEAD SCREW W / WASHER (SW)		FSK0408S0	2				
10	WATER VALVE		468655-01	1				
11	HEX HEAD BOLT W/WASHER [SW]		FBK0508F0	2				
12	DRAIN PIPE		321035-01	1				
13	T2 SCREW		FT20410S0	2				
14	HOSE (A)		373517P01	1				
15	HOSE (B)		374270P01	1				
16	DRAIN HOSE		475130G01	1				
17	SILICONE HOSE		H11014040	1				
18	VINYL HOSE		HD1923500	1				
19	TEE		120897M01	1				
20	SILICONE HOSE		H12226450	1				
21	VINYL HOSE		HD2226090	1				
22	VINYL HOSE		HD0912280	1				
23	INSULATION TUBE		H71323200	1				
24	HOSE CLAMP		435934-03	1				
25	HOSE CLAMP		435934-02	2				
26	CLIP BAND (H)		423866-08	1				
27	CLIP BAND (C)		423866-03	2				
28	TIE	CV-150	7920-0003	9				
29	CAP		417323-01	1				
30	FILTER		464377G01	1				



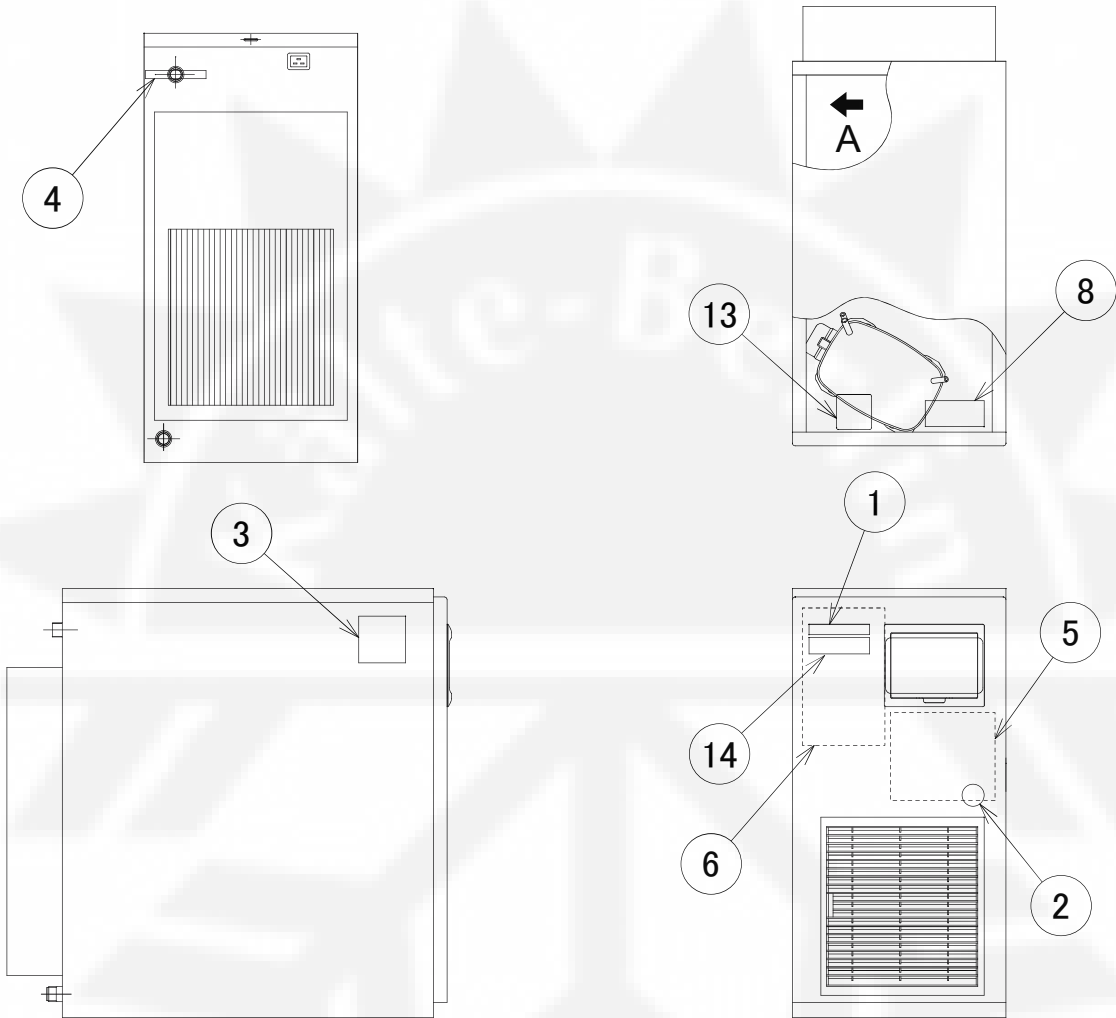
HE

MODEL: FM-300AFE-HC(N)		TITLE: G. CONTROL BOX ASSY					
INDEX NO.	DESCRIPTION	MATERIAL OR MODEL NUMBER	PART NUMBER	REQ'D NUMBER			
				K-1			
1	CONTROL BOX		258981G01	1			
2	COVER - CONTROL BOX		374269M01	1			
3	CONTROLLER BOARD - MAIN		P01634-34	1			
4	BOARD SUPPORT		414929-01	6			
5	TRANSFORMER		P01634F01	1			
6	PAN HEAD T2 SCREW		FT50308M0	2			
7	CONTROLLER BOARD - OPERATION		465645-01	1			
8	TRUSS HEAD SCREW		FST0408S0	4			
9	CAPACITOR		459704-01	1			
10	PAN HEAD SCREW SW		FSK0408S0	3			
11	POWER RELAY		449000-01	1			
12	T2 SCREW		FT20408F0	2			
13	RELAY		406132-08	1			
14	TAPPING SCREW		431415-01	2			
15	SURGE ABSORBER		436573-02	1			
16	PROTECTOR		440972-01	1			
17	ROCKER SWITCH		460681-01	1			
18	CONTROL LABEL		358611-01	1			
19	CAPACITOR - XY FILTER		460523-01	1			
20	BUSHING		428394-07	1			
21	BUSHING		428394-04	1			
22	HARNESS (A)		470240G01	1			
23	HARNESS (B)		469415G01	1			
24	HARNESS (D)		373631G01	1			
25	FUSE HOLDER		4Y2547-01	2			
26	FUSE		451924-02	2			
27	PAN HEAD SCREW		FSP0310F0	2			
28	FUSE LABEL		455750-02	2			

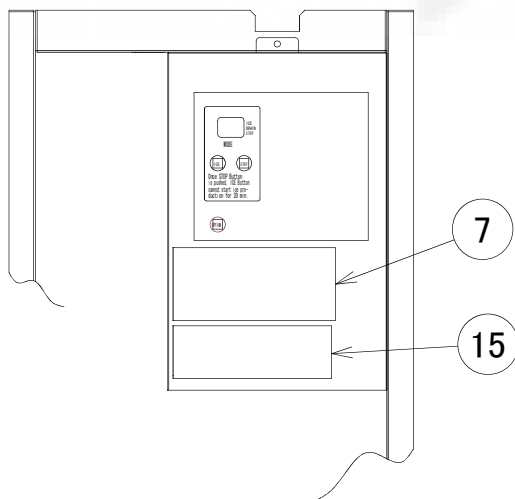


HE

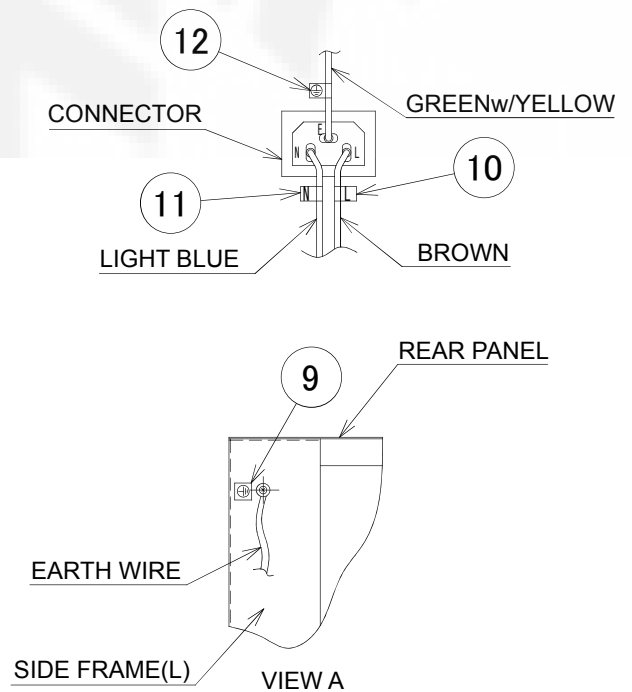
MODEL: FM-300AFE-HC(N)								TITLE: H. WINDOW PANEL ASSY			
INDEX NO.	DESCRIPTION	MATERIAL OR MODEL NUMBER	PART NUMBER	REQ'D NUMBER							
				K-1							
1	WINDOW FRAME		232648-01	1							
2	WINDOW PANEL		232649-03	1							



DETAIL CONTROL BOX

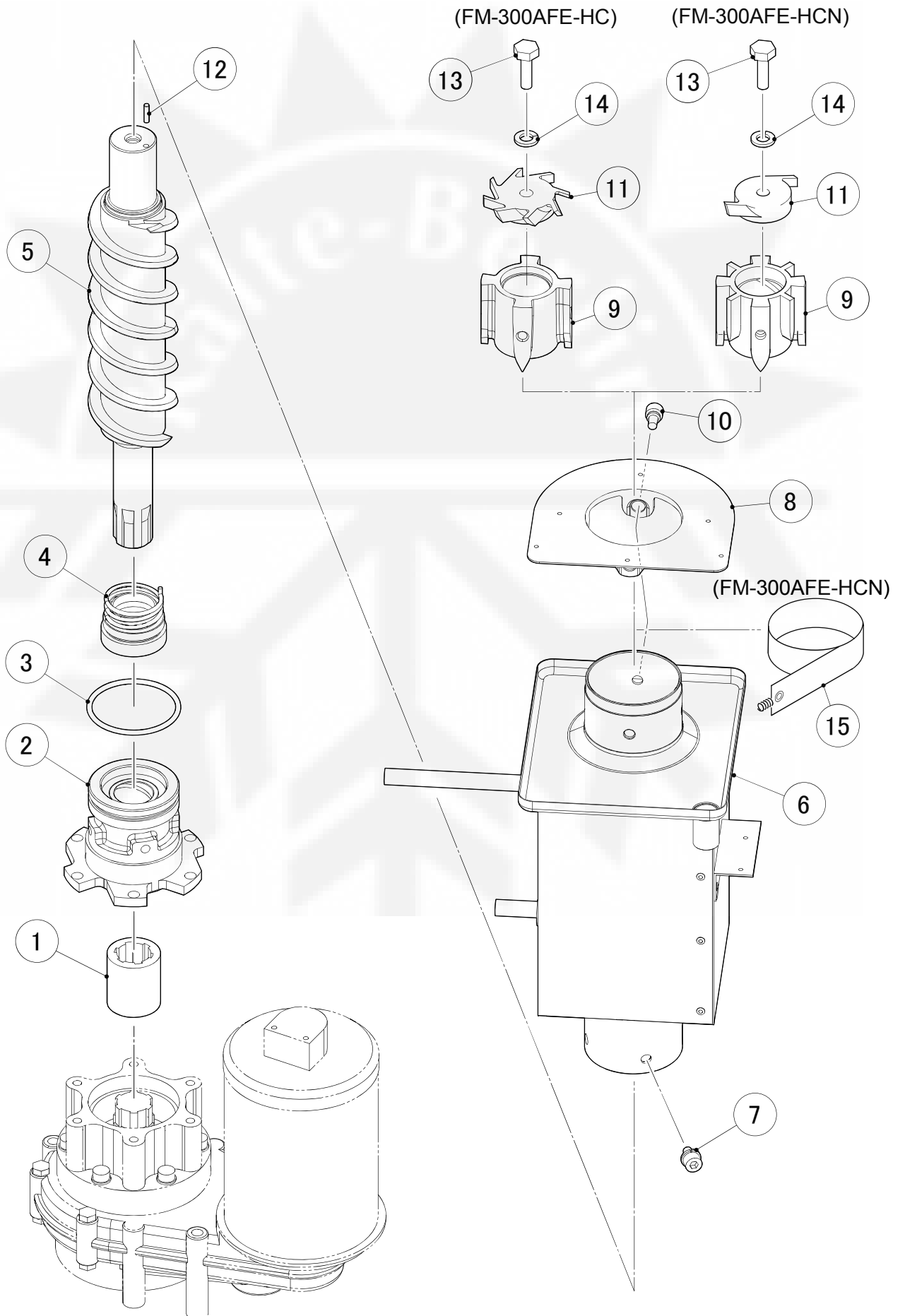


DETAIL LABEL-TERMINAL



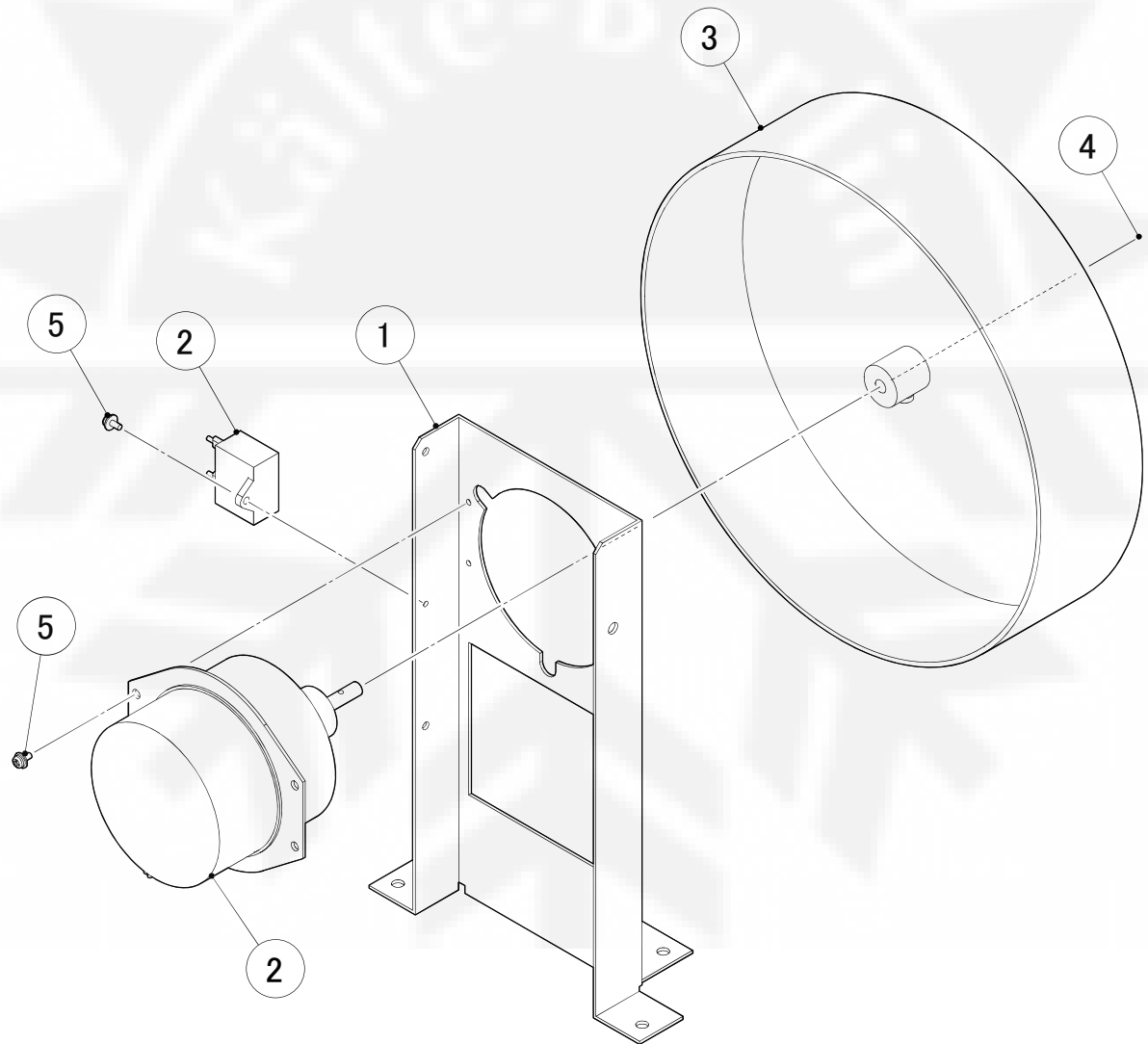
HE

MODEL: FM-300AFE-HC(N)				TITLE: J. LABEL LOCATION			
INDEX NO.	DESCRIPTION	MATERIAL OR MODEL NUMBER	PART NUMBER	REQ'D NUMBER			
				K-1			
1	EMBLEM		340842-01	1			
2	LABEL - PENGUIN L		454387-02	1			
3	NAME PLATE		NO SUPPLY	1			
4	CAUTION LABEL		452552-01	1			
5	LABEL - ERROR TABLE		234308-01	1			
6	WIRING LABEL		374278L01	1			
7	CAUTION LABEL (J)		439149-01	1			
8	CAUTION LABEL (F)		439146-01	1			
9	LABEL - GROUND (B)		450452-02	1			
10	LABEL - TERMINAL (L)		452379-03	1			
11	LABEL - TERMINAL (N)		452379-04	1			
12	LABEL - TERMINAL (EARTH)		452379-05	1			
13	LABEL - R290		474520L01	1			
14	LABEL - HFCFREE		373508L01	1			
15	CAUTION LABEL - HYDROCARBON		373722L01	1			



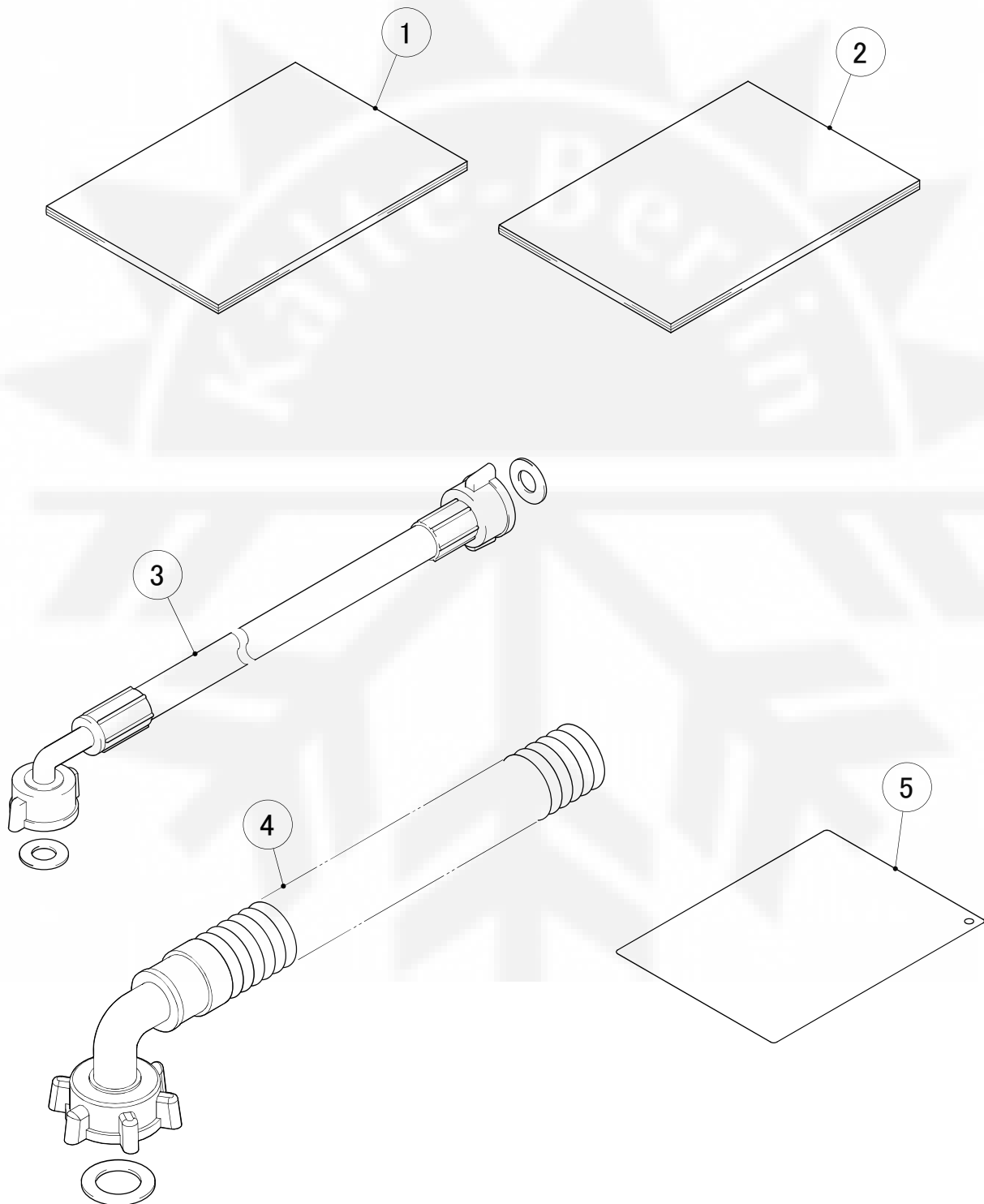
HE

MODEL: FM-300AFE-HC(N)					TITLE: K. EVAPORATOR ASSY			
INDEX NO.	DESCRIPTION	MATERIAL OR MODEL NUMBER	PART NUMBER	REQ'D NUMBER				
				K-1				
1	COUPLING		414137-01	1				
2	HOUSING		206657G02	1				
3	O RING		7616-G065	1				
4	MECHANICAL SEAL		432492-01	1				
5	AUGER		120863G02	1				
6	EVAPORATOR		258973G01	1				
7	SCREW		P01719-01	4				
8	FLANGE - 70		352713-01	1				
9	EXTRUDING HEAD-70F	FM-300AFE-HC	327097G02	1				
	EXTRUDING HEAD-70N	FM-300AFE-HCN	216531G02	1				
10	SEALBOLT-M8		P01768-01	4				
11	CUTTER	FM-300AFE-HC	317071-02	1				
	CUTTER 327385-01	FM-300AFE-HCN	327145-01	1				
12	DOWEL PIN		713S-0416	1				
13	SCREW - M10		458101-01	1				
14	SPLIT LOCK WASHER		FWSP10S0	1				
15	BELT HEATER / 70	FM-300AFE-HCN	469322-01	1				



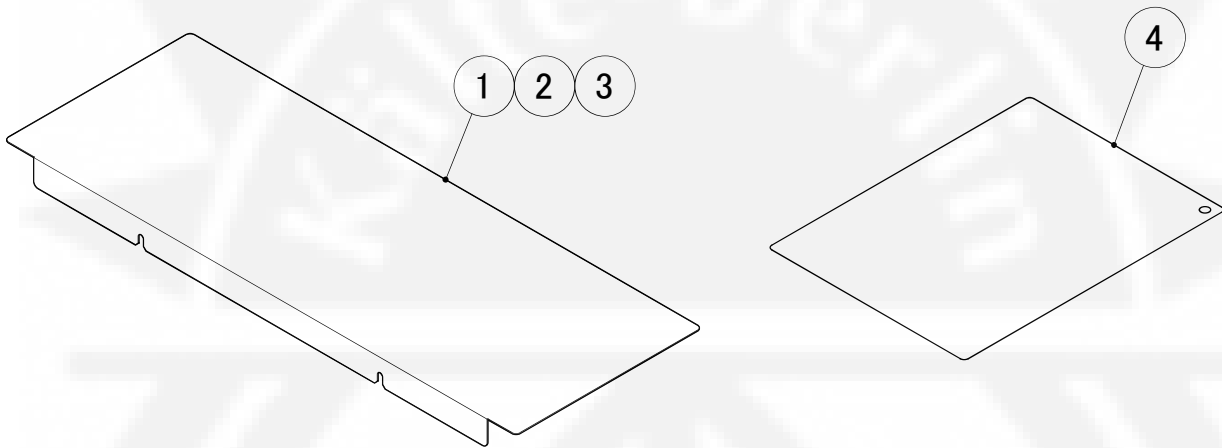
HE

MODEL: FM-300AFE-HC(N)		TITLE: L. FAN MOTOR ASSY		REQ'D NUMBER			
INDEX NO.	DESCRIPTION	MATERIAL OR MODEL NUMBER	PART NUMBER	K-1			
				1	BRACKET - FAN MOTOR		374267M01
2	FAN MOTOR		4Y2900-01	1			
3	FAN BLADE		421462-01	1			
4	SCREW	FAN BLADE ACCESSORIES	421462F01	1			
5	PAN HEAD SCREW W / WASHER (SW)		FSK0408S0	5			



HE

MODEL: FM-300AFE-HC(N)					TITLE: M. ACCESSORIES			
INDEX NO.	DESCRIPTION	MATERIAL OR MODEL NUMBER	PART NUMBER	REQ'D NUMBER				
				K-1				
1	INSTRUCTION MANUAL		L1F048202	1				
2	INSTALLATION MANUAL		L2F048201	1				
3	INLET HOSE		450722-01	1				
4	OUTLET HOSE		452365-01	1				
5	INSTRUCTION SHEET - ERROR		352237-01	1				



HE

MODEL: FM-300AFE-HC(N)				TITLE: N. OPTIONAL PARTS			
INDEX NO.	DESCRIPTION	MATERIAL OR MODEL NUMBER	PART NUMBER	REQ'D NUMBER			
				K-1			
1	TOP KIT - B3		259001M01	1			
2	TOP KIT - B5		259001M02	1			
3	TOP KIT - B8		259001M03	1			
4	INSTRUCTION MANUAL		373292L01	1			