

No.	F048-3308
ISSUED:	DEC. 25,2009
REVISED:	APR. 22,2011
SERVICE INFORMATION	



**HOSHIZAKI
MODULAR FLAKER**

MODEL FM-481AGE-HC(N)

PARTS LIST
(HE)

J-1 DEC. 2009
K-2 MAY. 2010

AUXILIARY CODE

U - 1

The auxiliary code is the first two characters in the serial number. The first character indicates the production year. Years progress or regress in alphabetical order. The series of letters and skipped letters depend on UL listing, production, and model. See the auxiliary code(s) and corresponding year(s) on the front cover.

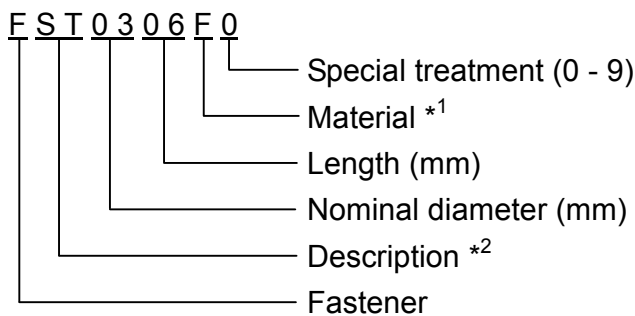
The second character indicates significant part changes within the same year. Base is "1" and this number advances for each change. If there is no significant part change at the turn of the year, this number starts from "0."

MARKS LOCATED UNDER THE AUXILIARY CODE

- = Part deleted.
- x = Part deleted and replaced by "o" part.
- o = New part in place of "x" part.

FASTENER PART NUMBER

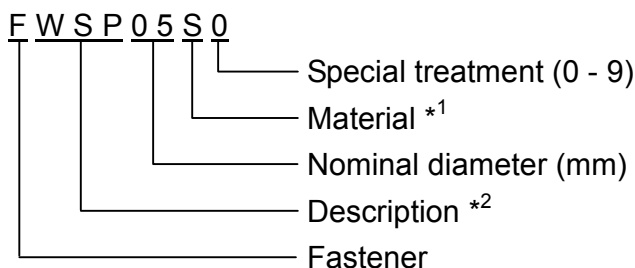
SCREWS



*¹ Material

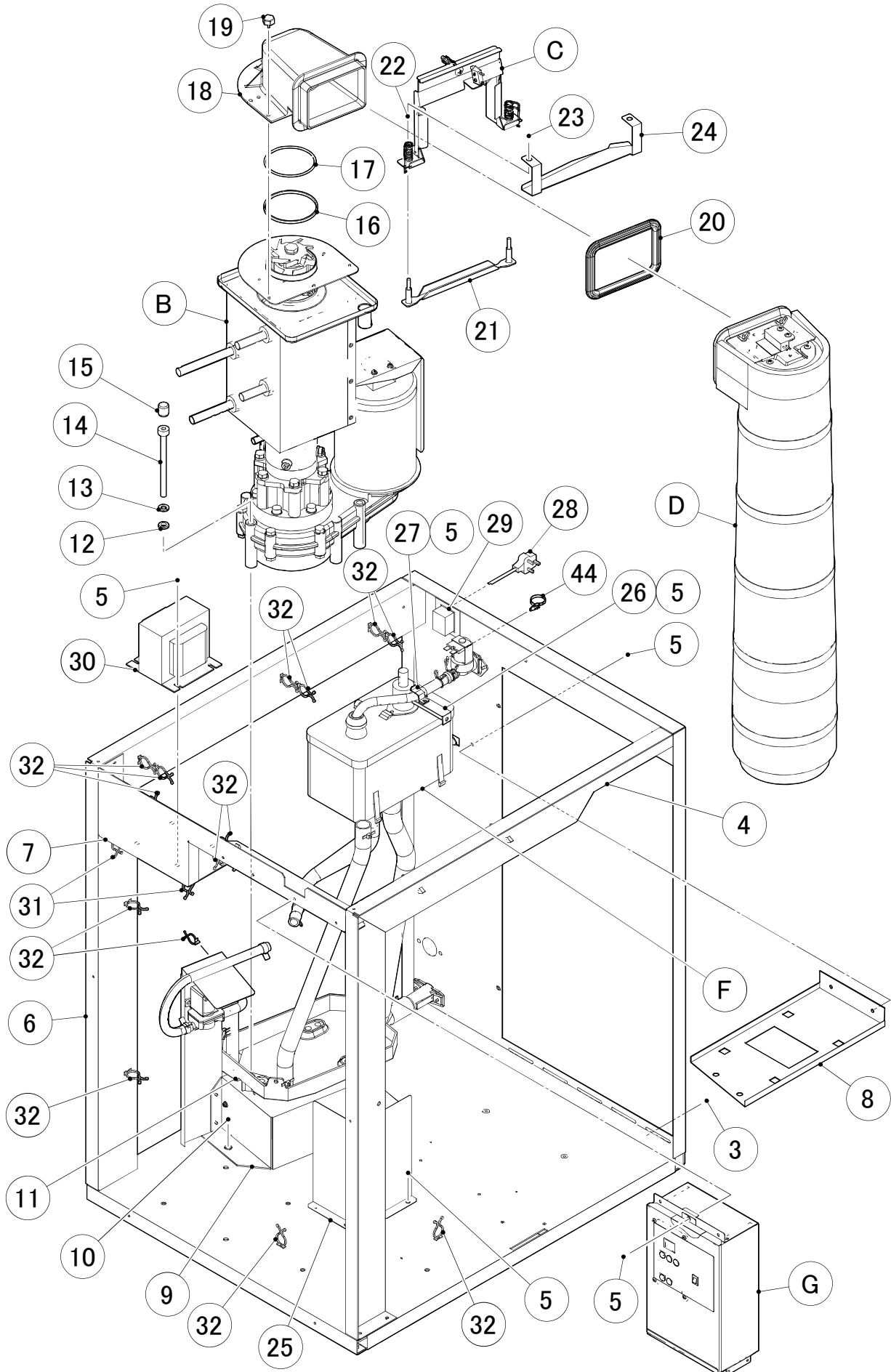
- F: Steel
- S: Austenitic stainless steel
- M: Martensitic stainless steel
- B: Copper alloy
- P: Polycarbonate
- N: Polyamide
- V: PVC
- A: ABS
- X: Polyacetal
- L: Aluminum

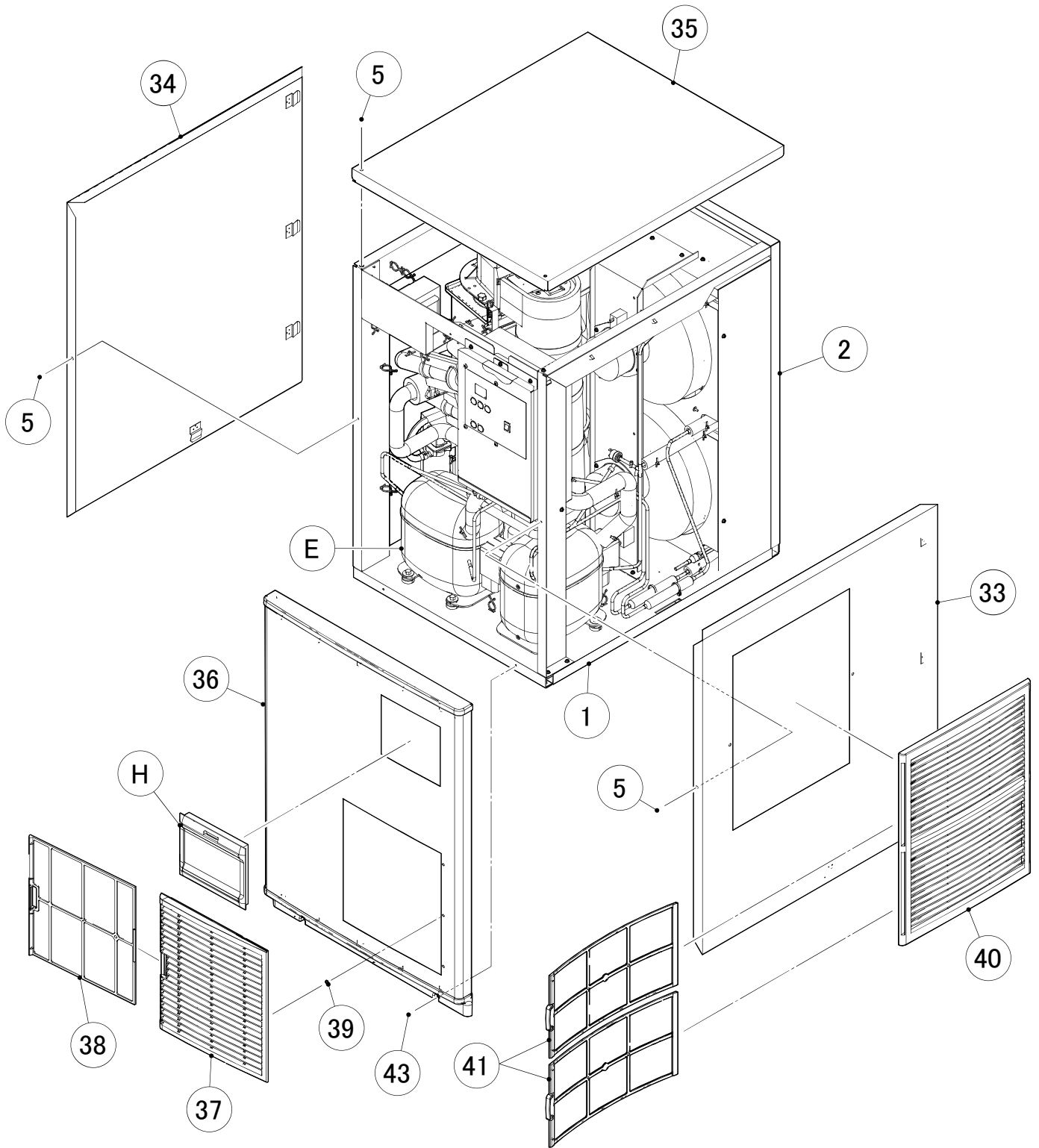
NUTS & WASHERS



*² Description

- First letter
- S: Machine screw
- T: Tapping screw
- M: Wood screw
- B: Bolt
- W: Washer
- N: Nut



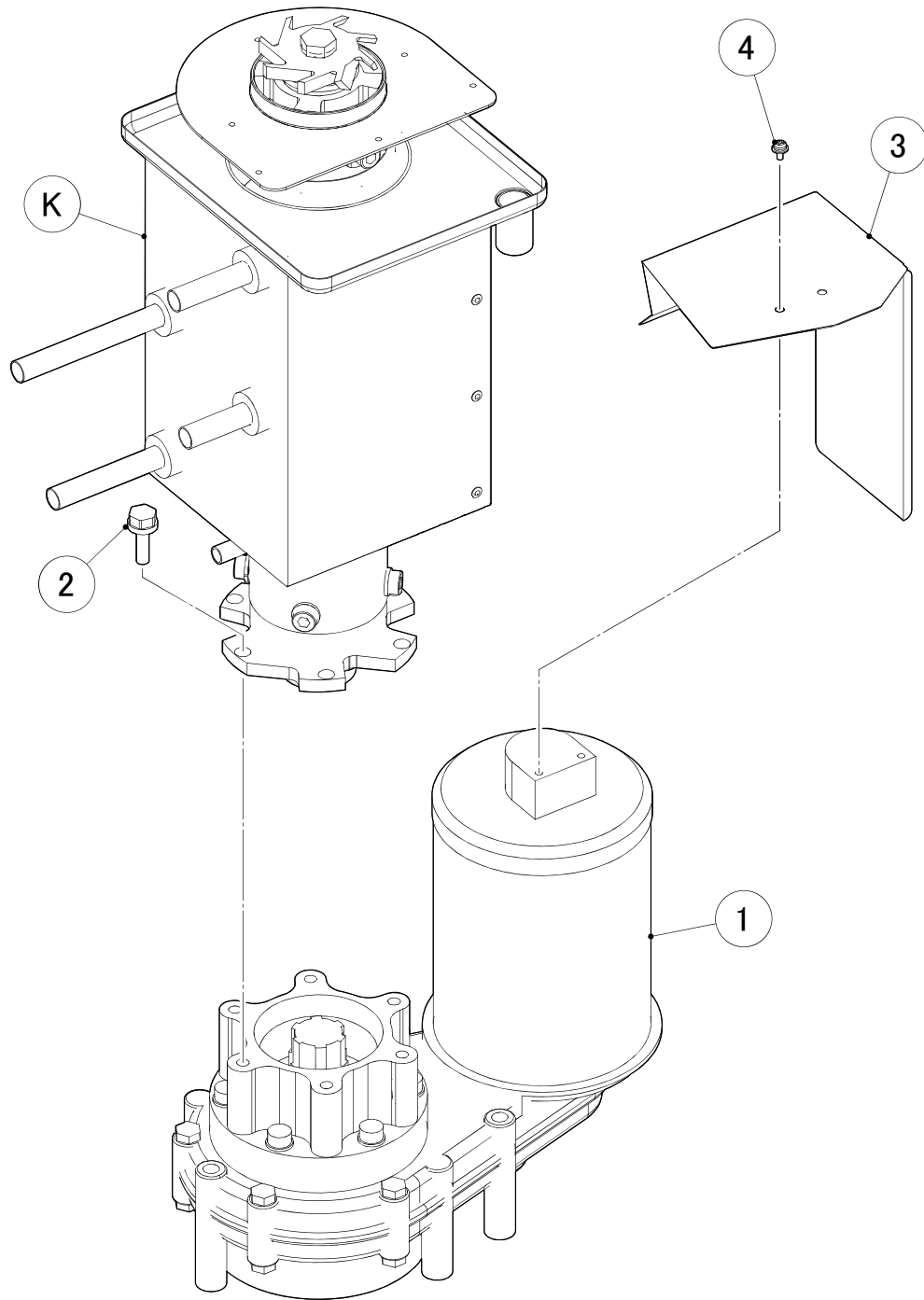


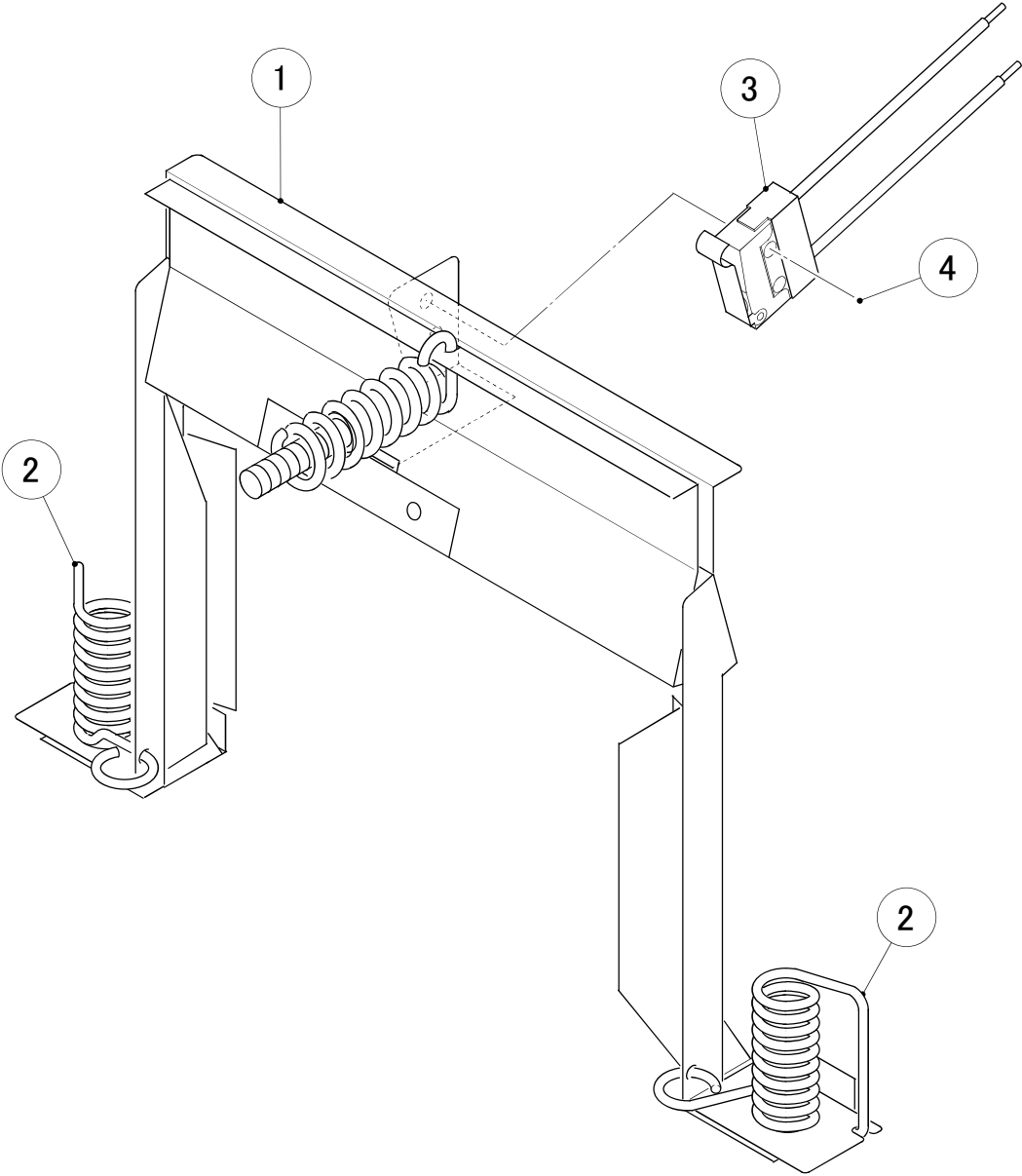
HE

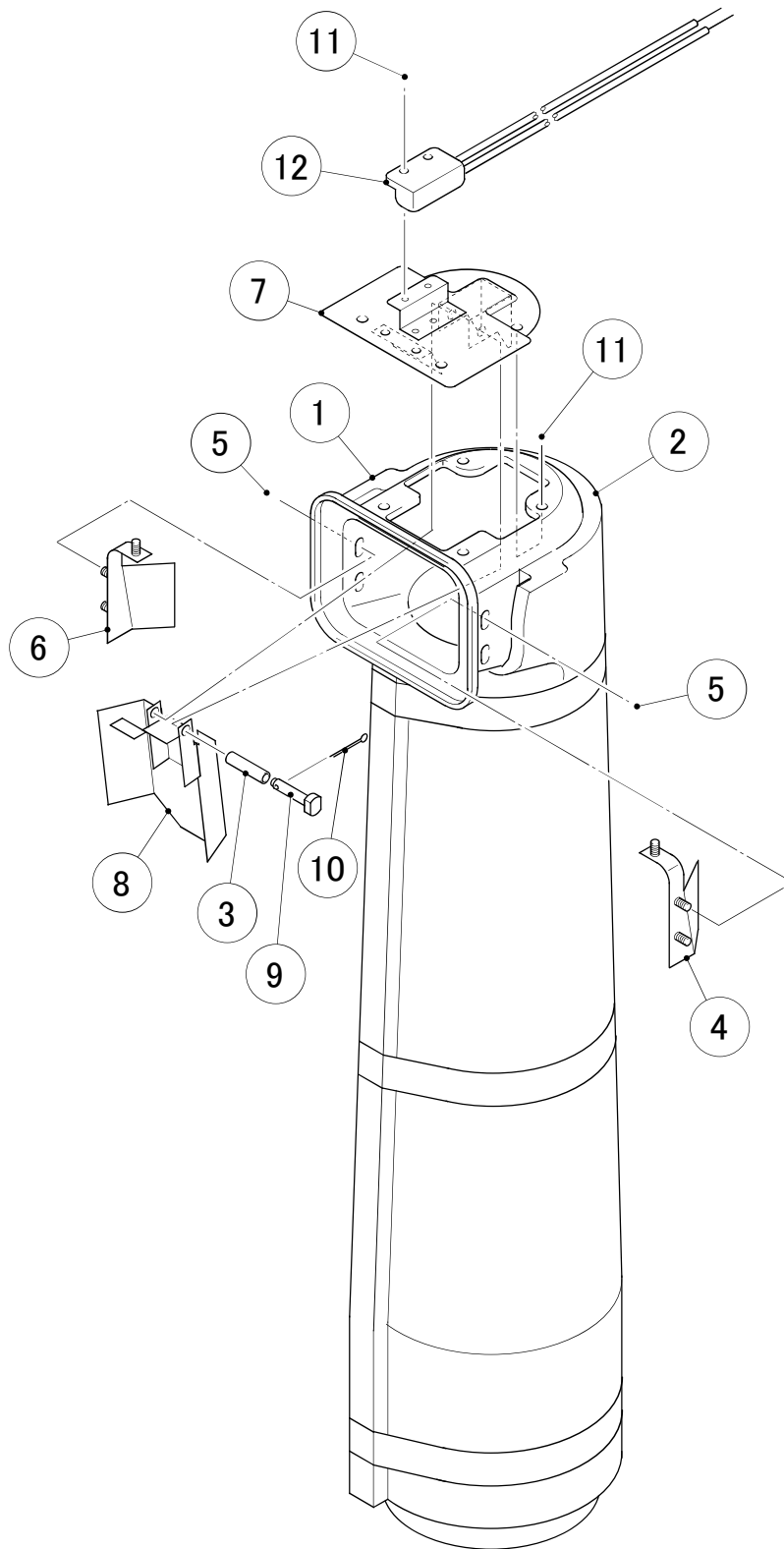
MODEL: FM-481AGE-HC(N)				TITLE: A. ICE FLAKER ASSY			
INDEX NO.	DESCRIPTION	MATERIAL OR MODEL NUMBER	PART NUMBER	REQ'D NUMBER			
				J-1, K-1	K-2		
B	ICE MAKING UNIT		373522A01	1	1		
C	BAND ASSY	S-9165	348911A01	1	1		
D	CHUTE ASSY		113006A01	1	1		
E	REFRIGERATION UNIT		120227A01	1	1		
F	WATER CIRCUIT		120228A01	1	1		
G	CONTROL BOX ASSY		258088A01	1	1		
H	WINDOW PANEL ASSY		348243A03	1	1		
J	LABEL LOCATION		258212A01	1	1		
M	ACCESSORIES		A02066-01	1	1		
1	BOTTOM PANEL		258078G01	1	1		
2	REAR PANEL(A)		373905G01	1	1		
3	HEX HEAD BOLT W/WASHER [SW]		FBK0512S0	2	2		
4	SIDE FRAME (R)		258239M01	1	1		
5	PAN HEAD SCREW W / WASHER (SW)		FSK0408S0	41	41		
6	SIDE FRAME (L)		258080M01	1	1		
7	FRONT FRAME		258140M01	1	1		
8	BRACKET - RESERVOIR		373519M01	1	1		
9	BRACKET - GEAR MOTOR		373520G01	1	1		
10	HEX HEAD BOLT		FBH0812S0	3	3		
11	DRAIN PAN		323765G01	1	1		
12	SEAL WASHER		458299-01	3	3		
13	SPLIT LOCK WASHER		FWSP08S0	3	3		
14	HEX. SOCKET HEAD CAP SCREW SUS 8×110		461285-01	3	3		
15	VINYL CAP		451272-01	3	3		
16	RING		432661-02	1	1		
17	O RING		7616-G070	1	1		
18	SPOUT		104797-01	1	1		
19	THUMB SCREW		415949G04	3	3		
20	PACKING		454256-01	1	1		
21	BAND (B)		459995G01	1	1		
22	FLANGE NUT		FNHF06S0	3	3		
23	HEX NUT		FNH106S0	5	5		

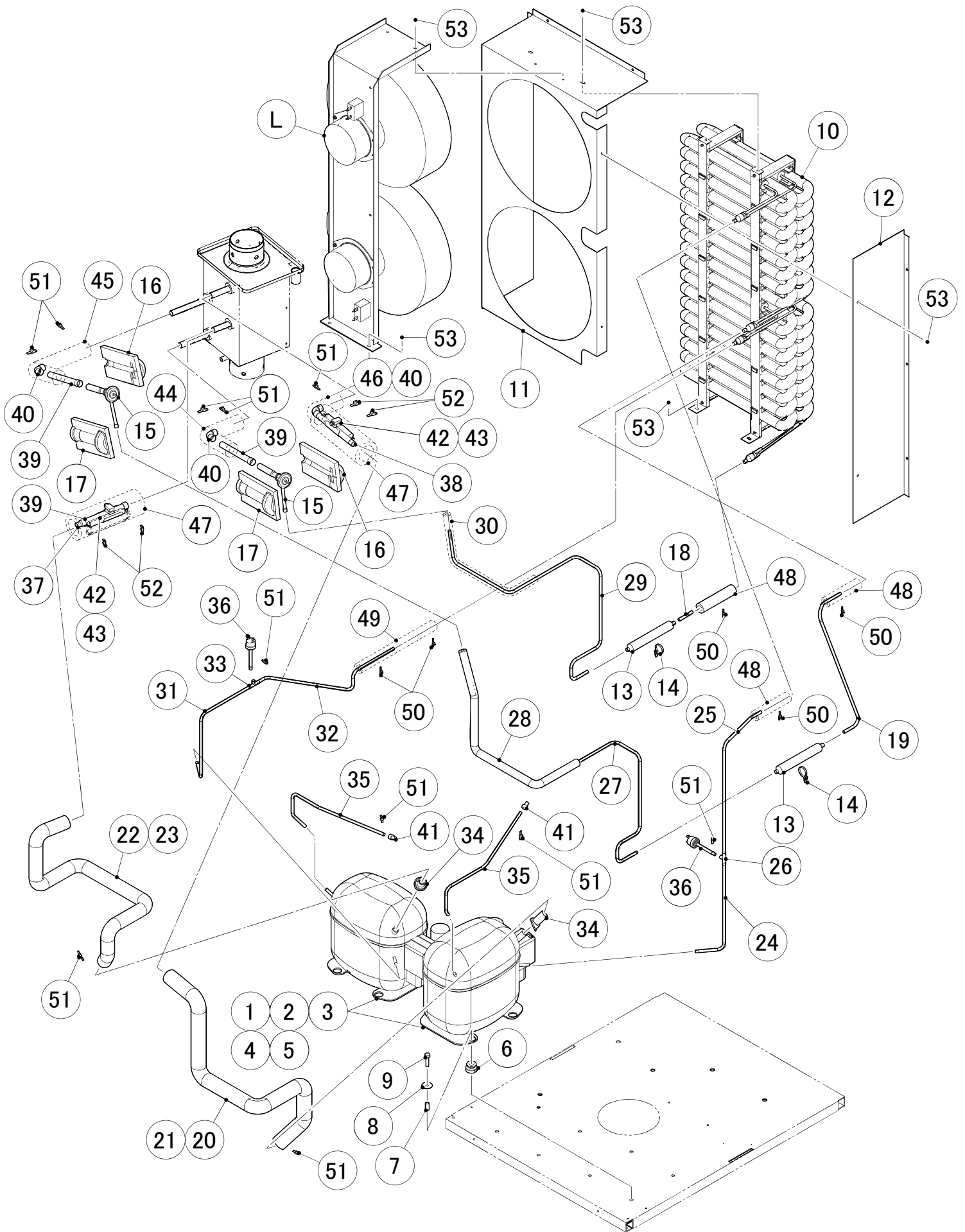
HE

MODEL: FM-481AGE-HC(N)				TITLE: A. ICE FLAKER ASSY			
INDEX NO.	DESCRIPTION	MATERIAL OR MODEL NUMBER	PART NUMBER	REQ'D NUMBER			
				J-1, K-1	K-2		
24	DRIP GUIDE		350725-01	1	1		
25	COVER - COMPRESSOR		373633M01	1	1		
26	BRACKET - WATER SUPPLY		474537M01	1	1		
27	BRACKET (A) - WATER SUPPLY		474638M01	1	1		
28	POWER CORD	UK Plug	P00244-01	1	1		
29	CONNECTOR		P00246-01	1	1		
30	TRANSFORMER		469405-01	1	1		
31	CLAMP	No.2674	427902-02	5	5		
32	CLAMP	No.4253	427902-05	16	16		
33	SIDE PANEL (R)		258142G01	1	1		
34	SIDE PANEL (L)		234110G01	1	1		
35	TOP PANEL		241736-01	1	1		
36	FRONT PANEL		373570G01	1	1		
37	LOUVER A		1A0547-01	1	1		
38	AIR FILTER		2A2062G01	1	1		
39	PUSH RETAINER		4A2414-01	3	3		
40	LOUVER		1A1329-01	1	1		
41	AIR FILTER		2A4128G01	2	2		
42	T2 SCREW		FT20408M0	2	2		
43	PAN HEAD SCREW W / WASHER (SW)		FSK0412S0	2	2		
44	PUSH MOUNT TIE		436156-01	1	1		









HE

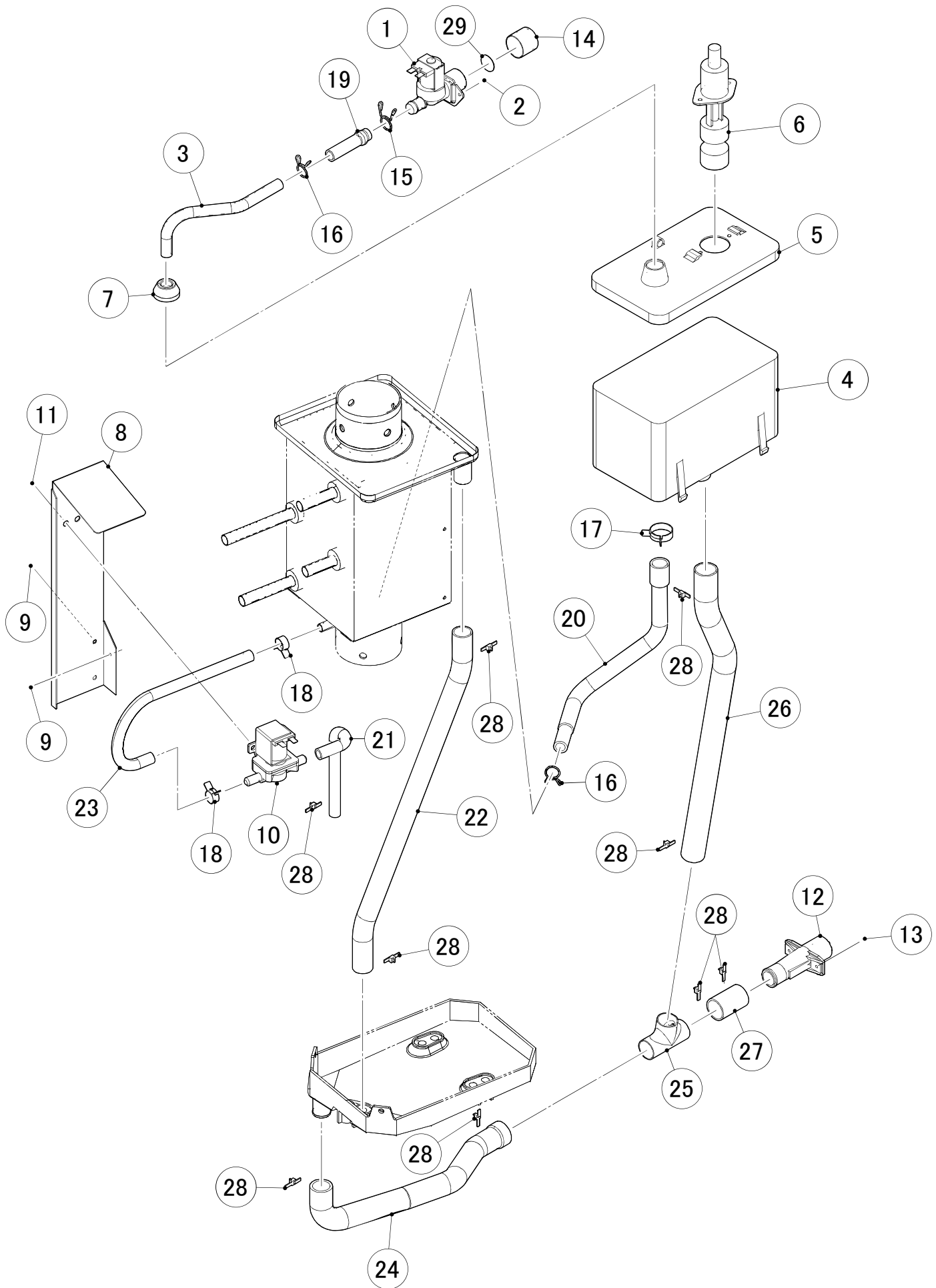
MODEL: FM-481AGE-HC(N)				TITLE: E. REFRIGERATION UNIT			
INDEX NO.	DESCRIPTION	MATERIAL OR MODEL NUMBER	PART NUMBER	REQ'D NUMBER			
				J-1, K-1	K-2		
L	FAN MOTOR ASSY		258141A01	1	1		
1	COMPRESSOR		P01630-01	2	2		
2	START RELAY		P01631-01	2	2		
3	START CAPACITOR		456350-01	2	2		
4	CORD RELIEF		452239-01	2	2		
5	COVER		459924-01	2	2		
6	RUBBER GROMMET		4A1452-01	8	8		
7	SLEEVE		4A1451-01	8	8		
8	WASHER		4A1450-01	8	8		
9	BOLT		4A1459-01	8	8		
10	CONDENSER ASSY		258069G01	1	1		
11	SHROUD (B)		257780M01	1	1		
12	SHROUD (A)		373315M01	1	1		
13	DRIER		462813-01	2	1		
			P01742-01	-	1		
14	PUSH MOUNT TIE		436156-01	2	2		
15	EXPANSION VALVE		P01626-01	2	2		
16	COVER (A) - EXPANSION VALVE		324313-01	2	2		
17	COVER (B) - EXPANSION VALVE		324313-02	2	2		
18	COPPER TUBE (A) - HIGH SIDE		474653M01	1	1		
19	COPPER TUBE (B) - HIGH SIDE		373526M01	1	-		
			374242M01	-	1		
20	COPPER TUBE (C1) - LOW SIDE	COPPER TUBE (C) - LOW SIDE 258082G01	258082M01	1	1		
21	INSULATION TUBE	COPPER TUBE (C) - LOW SIDE 258082G01	H71030800	1	1		
22	COPPER TUBE (D1) - LOW SIDE	COPPER TUBE (D) - LOW SIDE 258083G01	258083M01	1	1		
23	INSULATION TUBE	COPPER TUBE (D) - LOW SIDE 258083G01	H71030830	1	1		
24	COPPER TUBE (E1) - HIGH SIDE	COPPER TUBE (E) - HIGH SIDE 258084G01	258084M01	1	1		

HE

MODEL: FM-481AGE-HC(N)				TITLE: E. REFRIGERATION UNIT			
INDEX NO.	DESCRIPTION	MATERIAL OR MODEL NUMBER	PART NUMBER	REQ'D NUMBER			
				J-1, K-1	K-2		
25	COPPER TUBE (E2) - HIGH SIDE	COPPER TUBE (E) - HIGH SIDE 258084G01	258084M02	1	1		
26	TEE 6.4	COPPER TUBE (E) - HIGH SIDE 258084G01	417394-01	1	1		
27	COPPER TUBE (F1) - HIGH SIDE	COPPER TUBE (F) - HIGH SIDE 258085G01	258085M01	1	-		
		COPPER TUBE (F) - HIGH SIDE 258952G01	258952M01	-	1		
28	INSULATION TUBE	COPPER TUBE (F) - HIGH SIDE 258085G01	H70717560	1	1		
29	COPPER TUBE (G1) - HIGH SIDE	COPPER TUBE (G) - HIGH SIDE 258086G01	258086M01	1	1		
30	INSULATION TUBE	COPPER TUBE (G) - HIGH SIDE 258086G01	H70717370	1	1		
31	COPPER TUBE (H1) - HIGH SIDE	COPPER TUBE (H) - HIGH SIDE 258087G01	258087M01	1	1		
32	COPPER TUBE (H2) - HIGH SIDE	COPPER TUBE (H) - HIGH SIDE 258087G01	258087M02	1	1		
33	TEE 6.4	COPPER TUBE (H) - HIGH SIDE 258087G01	417394-01	1	1		
34	RUBBER SHEET		446470-01	2	2		
35	COPPER TUBE (K) - LOW SIDE		474642M01	2	2		
36	PRESSURE SWITCH	R290	459868-05	2	2		
37	REDUCER		421904-01	1	1		
38	COPPER TUBE (L) - LOW SIDE		474535M01	1	1		
39	COPPER TUBE (M) - LOW SIDE		474536M01	3	3		
40	ELBOW		417395-03	3	3		
41	LOCKRING STOPPER		P01677-01	2	2		
42	HOLDER - EXP. VALVE 1/2		3A0112-01	2	2		
43	CLAMP		443461-01	2	2		
44	INSULATION TUBE		H71333B19	1	1		

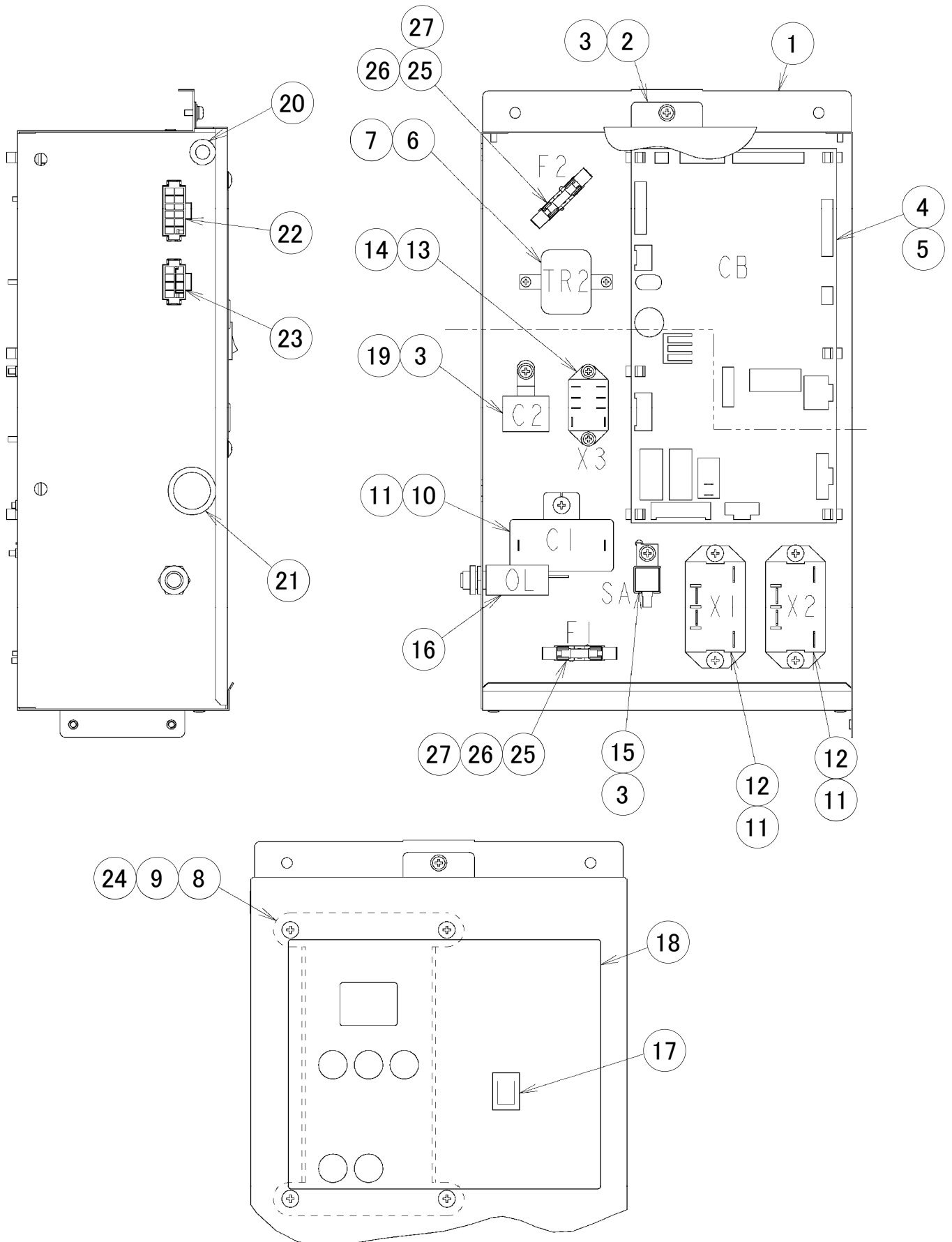
HE

MODEL: FM-481AGE-HC(N)		TITLE: E. REFRIGERATION UNIT					
INDEX NO.	DESCRIPTION	MATERIAL OR MODEL NUMBER	PART NUMBER	REQ'D NUMBER			
				J-1, K-1	K-2		
45	INSULATION TUBE		H71333B24	1	1		
46	INSULATION TUBE		H71333B10	1	1		
47	INSULATION TUBE		H73858B15	2	2		
48	INSULATION TUBE		H71323B10	3	3		
49	INSULATION TUBE		H71323B23	1	1		
50	TIE	CV-100	7920-0002	5	5		
51	TIE	CV-150	7920-0003	11	11		
52	TIE	CV-300	7920-0028	4	4		
53	PAN HEAD SCREW W/WASHER (SW) SUS		FSK0408S0	10	10		



HE

MODEL: FM-481AGE-HC(N)				TITLE: F. WATER CIRCUIT			
INDEX NO.	DESCRIPTION	MATERIAL OR MODEL NUMBER	PART NUMBER	REQ'D NUMBER			
				J-1, K-1	K-2		
1	WATER VALVE		452993-01	1	1		
2	HEX HEAD SCREW		FBH0408S0	2	2		
3	PIPE - WATER SUPPLY		474644M01	1	1		
4	RESERVOIR		232626-01	1	1		
5	RESERVOIR COVER		232627-01	1	1		
6	FLOAT SWITCH		458279-01	1	1		
7	COVER - RESERVOIR INLET		415094-01	1	1		
8	BRACKET - VALVE		373530M01	1	1		
9	PAN HEAD SCREW W / WASHER (SW)		FSK0408F0	3	3		
10	WATER VALVE		468655-01	1	1		
11	HEX HEAD BOLT W/WASHER [SW]		FBK0508F0	2	2		
12	DRAIN PIPE		321035-01	1	1		
13	T2 SCREW		FT20410S0	2	2		
14	CAP		417323-01	1	1		
15	HOSE CLAMP		435934-03	1	1		
16	HOSE CLAMP		435934-02	2	2		
17	CLIP BAND (H)		423866-08	1	1		
18	CLIP BAND (C)		423866-03	2	2		
19	SILICONE HOSE		H11014060	1	1		
20	HOSE (A)		373517P01	1	1		
21	DRAIN HOSE		459329-01	1	1		
22	VINYL HOSE		HD1923460	1	1		
23	VINYL HOSE		HD0912300	1	1		
24	HOSE (B)		373516P01	1	1		
25	TEE		120228M01	1	1		
26	VINYL HOSE		HD2226460	1	1		
27	VINYL HOSE		HD2226040	1	1		
28	TIE	CV-150	7920-0003	8	8		
29	FILTER		464377G01	1	1		



HE

MODEL: FM-481AGE-HC(N)		TITLE: G. CONTROL BOX ASSY					
INDEX NO.	DESCRIPTION	MATERIAL OR MODEL NUMBER	PART NUMBER	REQ'D NUMBER			
				J-1, K-1	K-2		
1	CONTROL BOX		258089G01	1	1		
2	COVER - CONTROL BOX		373531M01	1	1		
3	PAN HEAD SCREW W / WASHER (SW)		FSK0408S0	3	3		
4	CONTROLLER BOARD - MAIN		P01634-34	1	1		
5	BOARD SUPPORT		414929-01	6	6		
6	TRANSFORMER		P01634F01	1	1		
7	PAN HEAD T2 SCREW		FT50308M0	2	2		
8	CONTROLLER BOARD - OPERATION		465645-01	1	1		
9	TRUSS HEAD SCREW		FST0408S0	4	4		
10	CAPACITOR		459704-01	1	1		
11	T2 SCREW		FT20408F0	5	5		
12	POWER RELAY		449000-01	2	2		
13	RELAY		406132-08	1	1		
14	TAPPING SCREW		431415-01	2	2		
15	SURGE ABSORBER		436573-02	1	1		
16	PROTECTOR		425201-05	1	1		
17	ROCKER SWTCH		460681-01	1	1		
18	CONTROL LABEL		358611-01	1	1		
19	CAPACITOR - XY FILTER		460523-01	1	1		
20	BUSHING		428394-02	1	1		
21	BUSHING		428394-05	1	1		
22	HARNESS (A)		474599G01	1	1		
23	HARNESS (B)		469415G01	1	1		
24	HARNESS (D)		373631G01	1	1		
25	FUSE HOLDER		4Y2547-01	2	2		
26	FUSE		451924-02	2	2		
27	PAN HEAD T2 SCREW		FT50308F0	2	2		

