



## AUXILIARY CODE

U - 1

The auxiliary code is the first two characters in the serial number. The first character indicates the production year. Years progress or regress in alphabetical order. The series of letters and skipped letters depend on UL listing, production, and model. See the auxiliary code(s) and corresponding year(s) on the front cover.

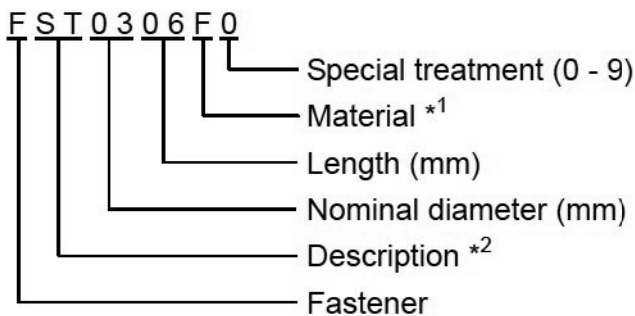
The second character indicates significant part changes within the same year. Base is "1" and this number advances for each change. If there is no significant part change at the turn of the year, this number starts from "0."

## MARKS LOCATED UNDER THE AUXILIARY CODE

- = Part deleted.
- x = Part deleted and replaced by "o" part.
- o = New part in place of "x" part.

## FASTENER PART NUMBER

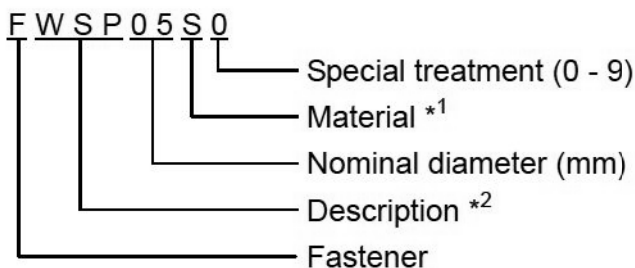
### SCREWS



\*1 Material

- F: Steel
- S: Austenitic stainless steel
- M: Martensitic stainless steel
- B: Copper alloy
- P: Polycarbonate
- N: Polyamide
- V: PVC
- A: ABS
- X: Polyacetal
- L: Aluminum

### NUTS & WASHERS



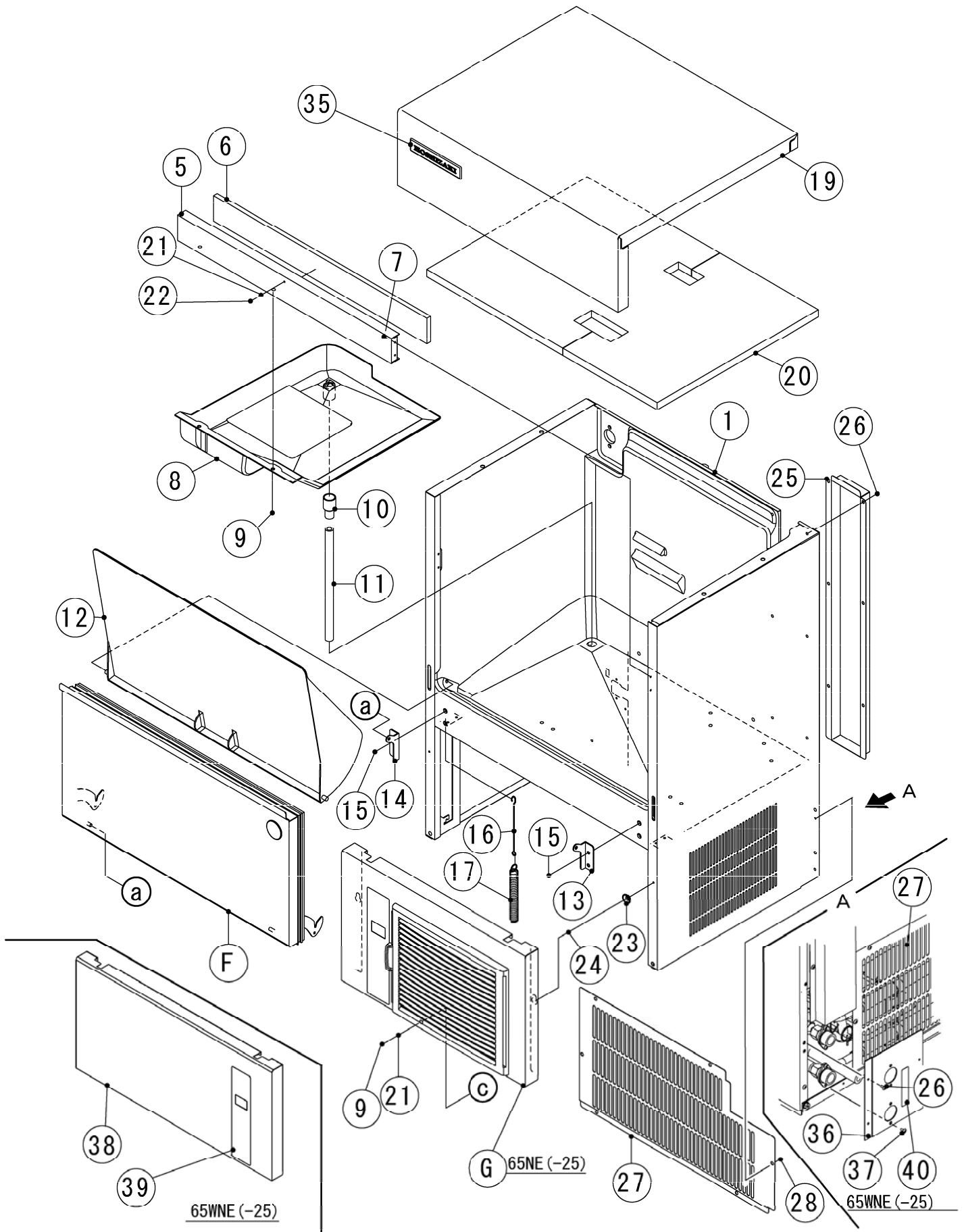
\*2 Description

- First letter
- S: Machine screw
- T: Tapping screw
- M: Wood screw
- B: Bolt
- W: Washer
- N: Nut

IM-65NE  
IM-65NE-25  
IM-65WNE  
IM-65WNE-25

A. ICE CUBER ASSY (1/2)

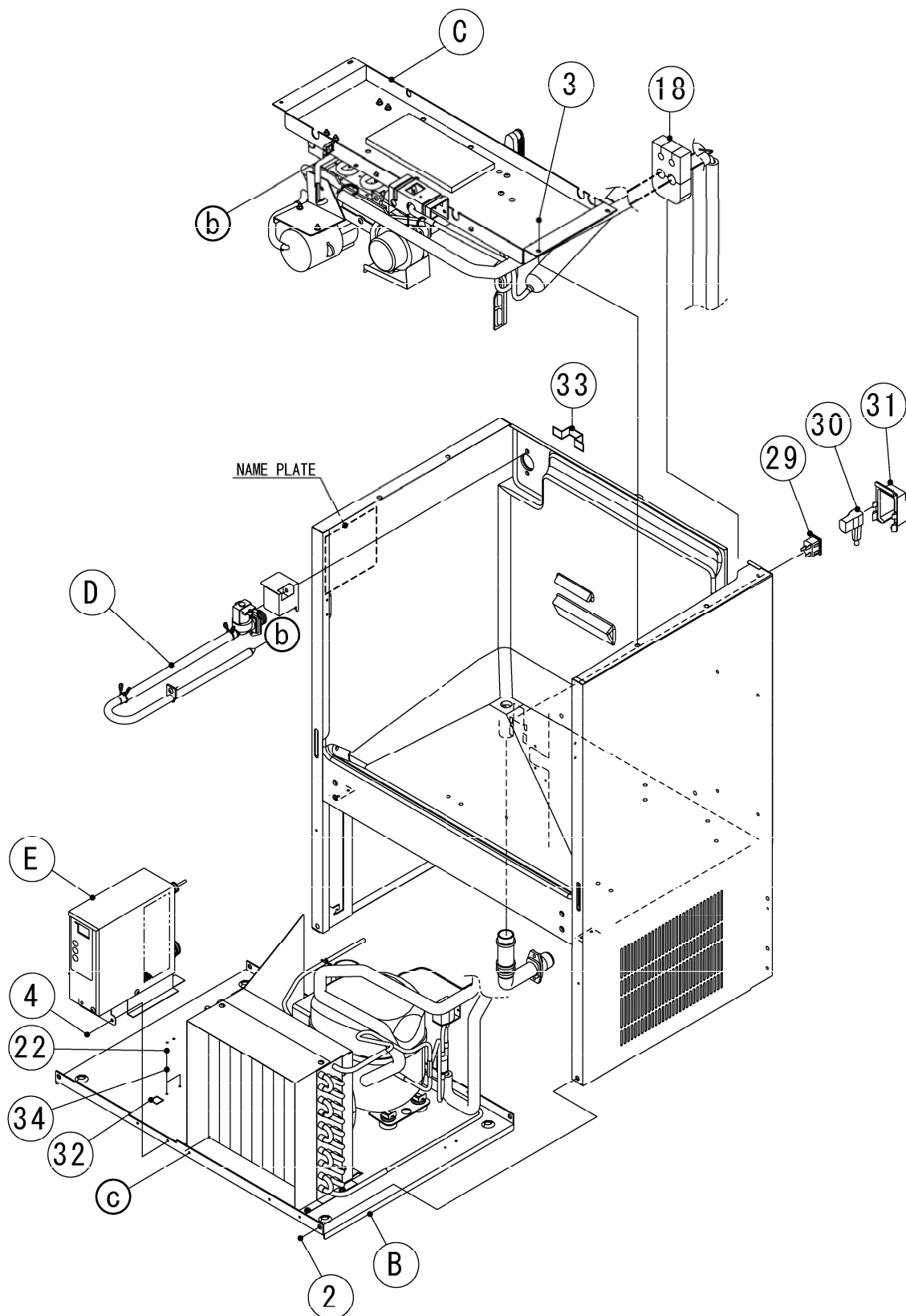
(B-1) and later



IM-65NE  
IM-65NE-25  
IM-65WNE  
IM-65WNE-25

A. ICE CUBER ASSY (2/2)

(B-1) and later

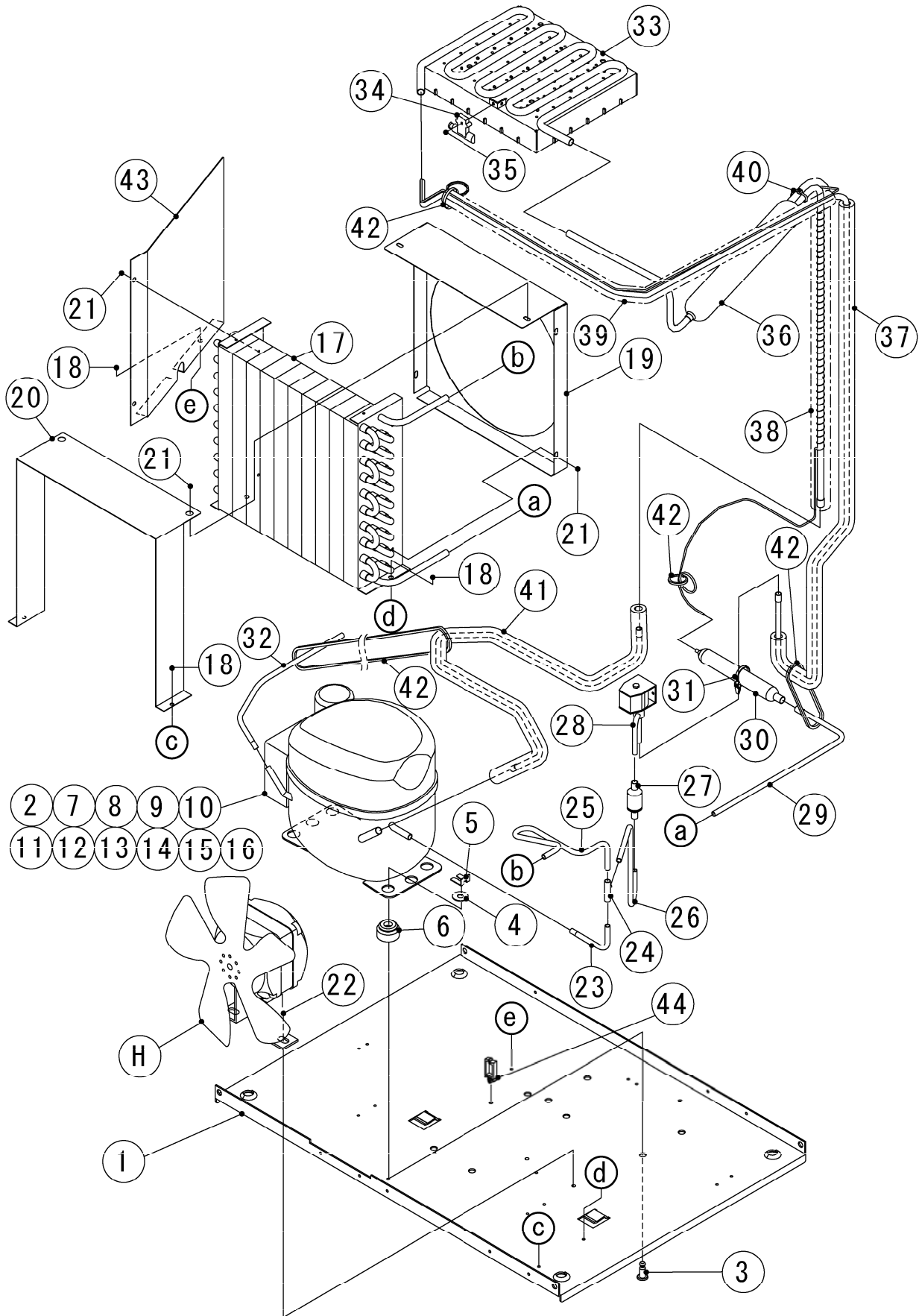


HE,GRAM

MODEL: <b>IM-65NE,IM-65NE-25</b> <b>IM-65WNE,IM-65WNE-25</b>		TITLE: <b>A.ICE CUBBER ASSY</b>					
INDEX NO.	DESCRIPTION	MATERIAL OR MODEL NUMBER	PART NUMBER	REQ'D NUMBER			
				B-1			
B	REFRIGERATION ASSY		1H4912A01	1			
		(IM-65WNE)(IM-65WNE-25)	1H5150A01	1			
C	ICE MAKING MECHANISM ASSY		1H4910A01	1			
D	WATER CIRCUIT ASSY		3Y5857A01	1			
E	CONTROL BOX ASSY		2X0439A02	1			
F	DOOR ASSY		3Y5644A02	1			
G	FRONT PANEL LOWER ASSY	(IM-65NE)(IM-65NE-25)	3Y5615A02	1			
1	UNIT FRAME		1H4909G01	1			
2	TRUSS HEAD TAPPING SCREW T2	6*16	1H4196Z02	4			
3	TRUSS HEAD TAPPING SCREW T2		FT20410M0	4			
4	FLANGE BOLT (S-TITE)		FTR0408M0	2			
5	FRONT FRAME		3H1678-12	1			
6	INSULATION - FRONT FRAME		4H2317-03	1			
7	RIVET	SSD42SSBS(t1.6~3.2)	7170-0002	4			
8	DRAIN PAN		2H1441-02	1			
9	TRUSS HEAD TAPPING SCREW (S-TITE)		FTS0408M0	3			
10	DRAIN TUBE		4H2585-01	1			
11	DRAIN PIPE		4Y7493P03	1			
12	SLOPE		2H1349-02	1			
13	HINGE (RIGHT)		4H2583-01	1			
14	HINGE (LEFT)		4H2584-01	1			
15	HEX HEAD BOLT (SPRING WASHER AND FLAT WASHER)		FBK0616S0	4			
16	HOOK		404060-10	1			
17	SPRING		4H0823-01	1			
18	INSULATION-BIN		4Y7416P01	1			
19	FRONT PANEL(UPPER)	(HE) Including No. 35	3Y5548G03	1			
		(GRAM) Including No. 35	3Y5548003	1			
20	INSULATION - TOP		3Y5960P01	1			
21	SPRING WASHER		FWSP04S0	2			
22	TRUSS HEAD MACHINE SCREW		FST0408S0	3			
23	TAPER COLLAR		4H0171-01	2			
24	RIVET	SSD42BS	7170-0001	2			
25	COVER - PIPE		3Y5869M01	1			

HE,GRAM

MODEL: <b>IM-65NE,IM-65NE-25</b> <b>IM-65WNE,IM-65WNE-25</b>				TITLE: <b>A.ICE CUBBER ASSY</b>			
INDEX NO.	DESCRIPTION	MATERIAL OR MODEL NUMBER	PART NUMBER	REQ'D NUMBER			
				B-1			
26	TRUSS HEAD TAPPING SCREW T2		FT20408F0	6			
		(IM-65WNE)(IM-65WNE-25)		14			
27	REAR COVER		3Y5858M01	1			
		(IM-65WNE)(IM-65WNE-25)	3Y6615M01	1			
28	TRUSS HEAD TAPPING SCREW T2	(IM-65NE)(IM-65NE-25)	FT20408M0	6			
29	CONNECTOR		P00245-02	1			
30	POWER CORD	CONT Plug	P00240-01	1			
31	COVER - CONNECTOR	ACCESSORIES NO.4	2X0271P01	1			
32	LABEL - GROUND (B)		450452-02	1			
33	CAUTION - LABEL		452552-01	1			
34	TOOTH WASHER		FWTB04S0	2			
35	EMBLEM	(HE)	340842-01	1			
	EMBLEM-GRAM	(GRAM)	4Y6123L01	1			
36	BRACKET - WATER	(IM-65WNE)(IM-65WNE-25)	4Y7399M01	1			
37	S-TITE TRUSS HEAD SCREW	(IM-65WNE)(IM-65WNE-25)	FTS0408F0	4			
38	FRONT PANEL LOWER(G)	(IM-65WNE)(IM-65WNE-25)	3Y5939G02	1			
39	OPERATION LABEL	(IM-65WNE)(IM-65WNE-25)	375116L03	1			
40	LABEL-CONNECTION	(IM-65WNE)(IM-65WNE-25)	464541-02	1			

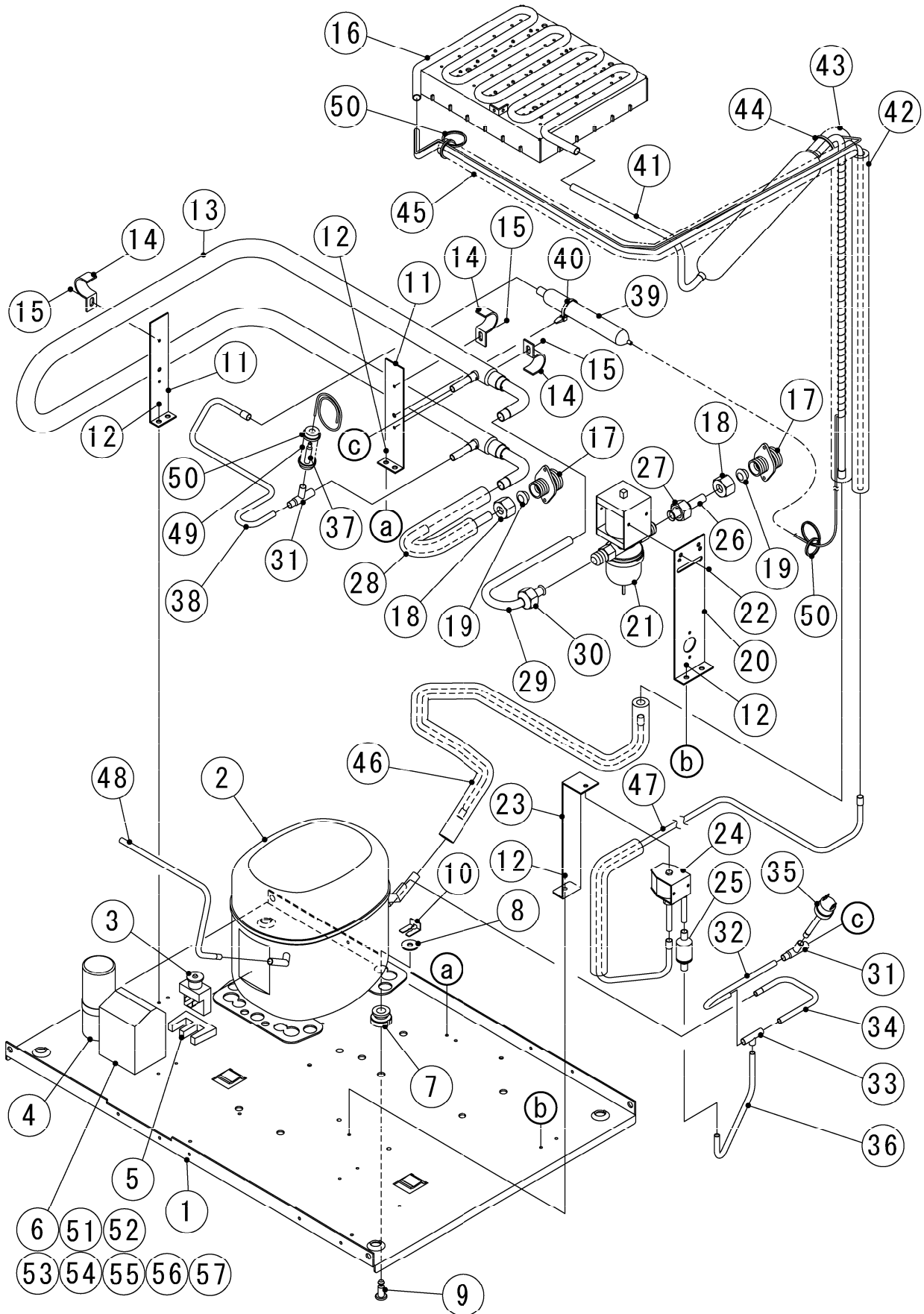


HE,GRAM

MODEL: <b>IM-65NE</b> <b>IM-65NE-25</b>		TITLE: <b>B.REFRIGERATION ASSY</b>					
INDEX NO.	DESCRIPTION	MATERIAL OR MODEL NUMBER	PART NUMBER	REQ'D NUMBER			
				B-1			
H	FAN MOTOR ASSY		3Y5886A01	1			
1	BASE		1H4829M01	1			
2	COMPRESSOR	(50Hz)	P02582-01	1			
		(60Hz)	P02617-01	1			
3	PIN		P02605-01	4			
4	WASHER		P02606-01	4			
5	CLAMP		P02607-01	4			
6	RUBBER GROMMET		P02608-01	4			
7	TERMINAL COVER		P02609-01	1			
8	SCREW		P00840-01	2			
9	BRACKET FOR CAPACITOR		P02610-01	1			
10	START CAPACITOR		P02611-01	1			
11	TERMINAL BOARD		P02612-01	1			
12	STARTING RELAY	(50Hz)	P02622-01	1			
		(60Hz)	P02619-01	1			
13	MOTOR PROTECTOR	(50Hz)	P02621-01	1			
		(60Hz)	P02614-01	1			
14	PROTECTOR RETAINER		P00839-01	1			
15	SELF TAPPING SCREW M4-11		P02615-01	1			
16	SELF TAPPING SCRW M4-21		P02616-01	1			
17	CONDENSER - AIR COOLED		P02263-01	1			
18	FLANGE BOLT (S-TITE)		FTR0408M0	5			
19	SHROUD		3Y5883M01	1			
20	COVER - CONDENSER		3Y5890M01	1			
21	TRUSS HEAD TAPPING SCREW T2		FT20408F0	6			
22	HEX HEAD BOLT (SPRING WASHER AND FLAT WASHER)		FBK0612F0	2			
23	PIPE(A) - HIGH SIDE		4Y7160M01	1			
24	TEE		417394-01	1			
25	PIPE(B) - HIGH SIDE		4Y7161M01	1			
26	PIPE(A) - HOT		4Y7162M01	1			
27	STRAINER		P00008-01	1			
28	HOT GAS VALVE		P02539-01	1			
29	PIPE(C) - HIGH SIDE		4Y7163M01	1			
30	DRIER		P00007-01	1			





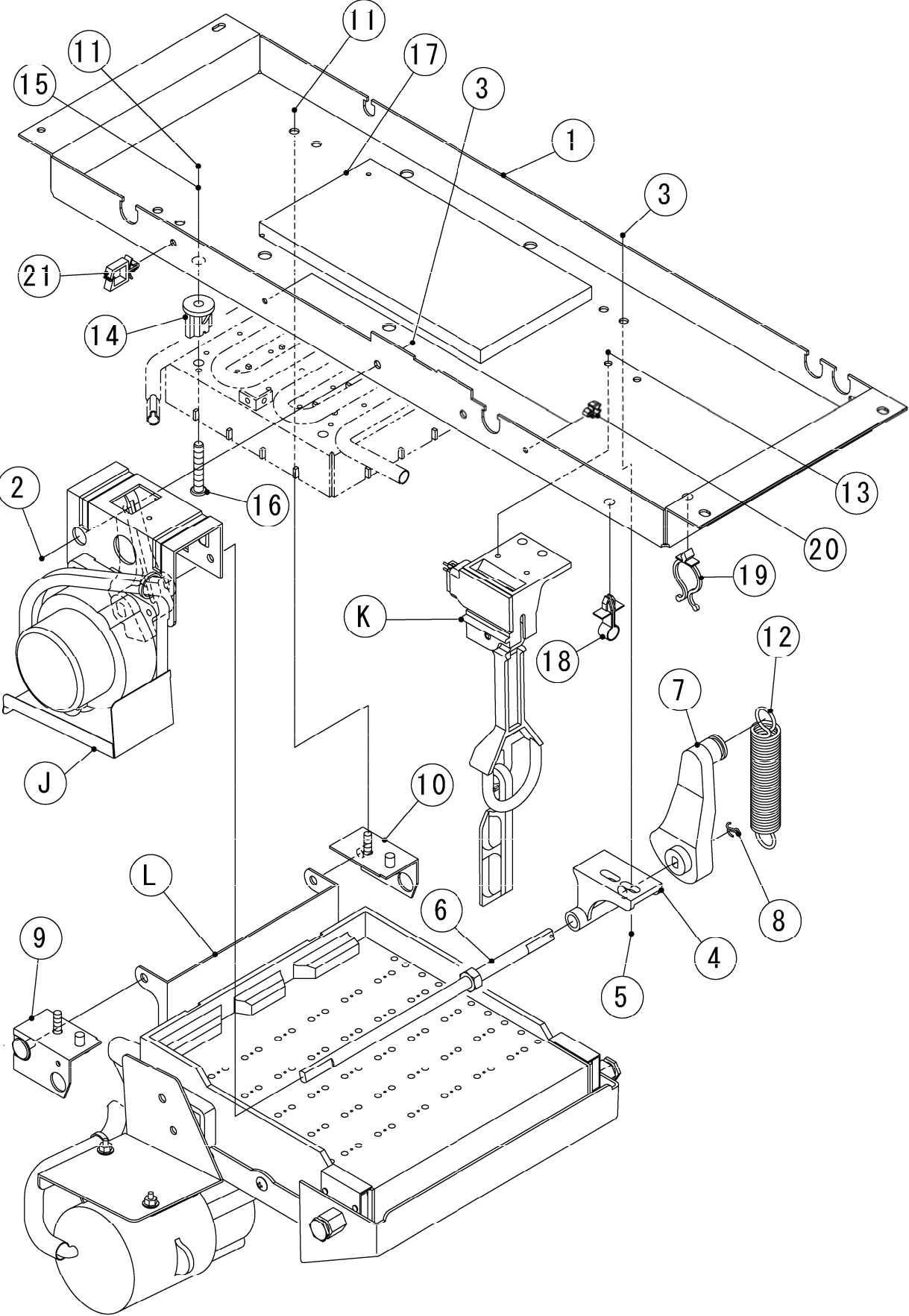


HE,GRAM

MODEL: <b>IM-65WNE</b> <b>IM-65WNE-25</b>		TITLE: <b>B.REFRIGERATION ASSY</b>					
INDEX NO.	DESCRIPTION	MATERIAL OR MODEL NUMBER	PART NUMBER	REQ'D NUMBER			
				B-1			
1	BASE		1H4829M01	1			
2	COMPRESSOR	(50Hz)	451196-01	1			
		(60Hz)	P02617-01	1			
3	STARTING RELAY	(50Hz)	451197-01	1			
		(60Hz)	P02619-01	1			
4	STARTING CAPACITOR	(50Hz)	450898-01	1			
		(60Hz)	P02611-01	1			
5	CORD RELIEF	(50Hz)	450899-01	1			
6	COVER	(50Hz)	450896-01	1			
	TERMINAL COVER	(60Hz)	P02609-01	1			
7	GROMMET	(50Hz)	450897-01	4			
	RUBBER GROMMET	(60Hz)	P02608-01	4			
8	WASHER CUSHION	(50Hz)	450894-01	4			
	WASHER	(60Hz)	P02606-01	4			
9	STEEL PIN	(50Hz)	452255-01	4			
	PIN	(60Hz)	P02605-01	4			
10	CLIP	(50Hz)	452256-01	4			
	CLAMP	(60Hz)	P02607-01	4			
11	BRACKET - CONDENSER		4H5731-01	2			
12	FLANGE BOLT (S-TITE)		FTQ0410M0	7			
13	CONDENSER - WATER COOLING		2X1106G01	1			
14	CLAMP(B) - CONDENSER		4H0622-01	3			
15	T2 TRUSS HEAD SCREW		FT20408F0	3			
16	EVAPORATOR		3H6803G02	1			
		(IM-65WNE-25)	3H4407G01	1			
17	FITTING(P)		3Y0747-01	2			
18	NUT (A) - FITTING		415713-03	2			
19	TAPPERED PACKING		415715-01	2			
20	BRACKET - WATER REGURATOR		4X5632-01	1			
21	WATER REGULATOR		448082-01	1			
22	TRUSS HEAD SCREW		FST0406S0	2			
23	BRACKET - HOT GAS VALVE		4H5186-01	1			
24	HOT GAS VALVE		P02539-01	1			
25	STRAINER		P00008-01	1			
26	PIPE(C) - WATER		4Y7391M01	1			
27	NUT - FLARE		403695-01	1			



IM-65NE  
 IM-65NE-25  
 IM-65WNE  
 IM-65WNE-25 C. ICE MAKING MACHANISM ASSY (B-1) and later



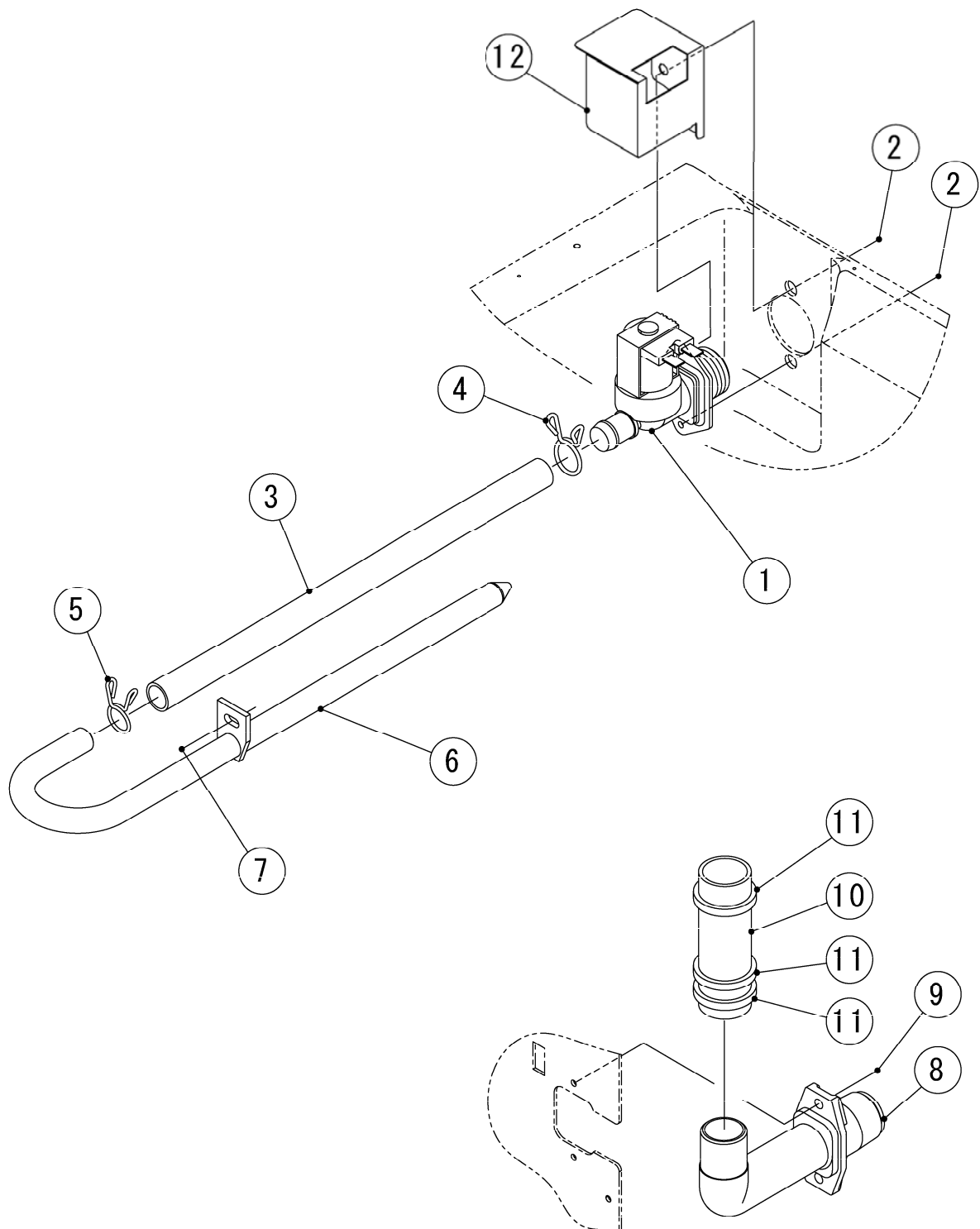
HE,GRAM

MODEL: <b>IM-65NE,IM-65NE-25</b> <b>IM-65WNE,IM-65WNE-25</b>		TITLE: <b>C.ICE MAKING MECHANISM</b> <b>ASSY</b>					
INDEX NO.	DESCRIPTION	MATERIAL OR MODEL NUMBER	PART NUMBER	REQ'D NUMBER			
				B-1			
J	ACTUATOR MOTOR ASSY		3Y5641A02	1			
K	BIN CONTROL SWITCH		3H1537A02	1			
L	WATER PAN ASSY		2X0656A01	1			
1	BRACKET - ICE MAKING MECHANISM		2X0657M01	1			
		(IM-65NE-25) (IM-65WNE-25)	2X0911M01	1			
2	TRUSS HEAD MACHINE SCREW		FST0512S0	2			
3	FLANGE NUT		FNHF05S0	4			
4	CAM SHAFT BEARING		307256-01	1			
5	TRUSS HEAD MACHINE SCREW		FST0516S0	2			
6	CAM SHAFT		4H2589G01	1			
7	CAM (B)		3H1389-01	1			
8	COTTER PIN		711S-0212	1			
9	BEARING (FRONT) - WATER PAN		4H2591G02	1			
10	BEARING (REAR) - WATER PAN		4H2592G02	1			
11	FLANGE NUT		FNHF06S0	6			
12	SPRING		4H2590-01	1			
13	TRUSS HEAD TAPPING SCREW T2		FT20410M0	2			
14	SPACER		4H0471-01	4			
		(IM-65NE-25) (IM-65WNE-25)	4X5342-01	4			
15	WASHER		4H0777-01	4			
16	SCREW EVAPORATOR		4Y4922M01	4			
		(IM-65NE-25) (IM-65WNE-25)	4Y4922M02	4			
17	INSULATION (D)		4Y7347P01	1			
18	CLAMP		428644-02	1			
19	CLAMP	No.2674	427902-02	1			
20	CLAMP		426197-01	2			
21	WIRE SADDLE		428060-03	1			

IM-65NE  
IM-65NE-25  
IM-65WNE  
IM-65WNE-25

D. WATER CIRCUIT ASSY

(B-1) and later



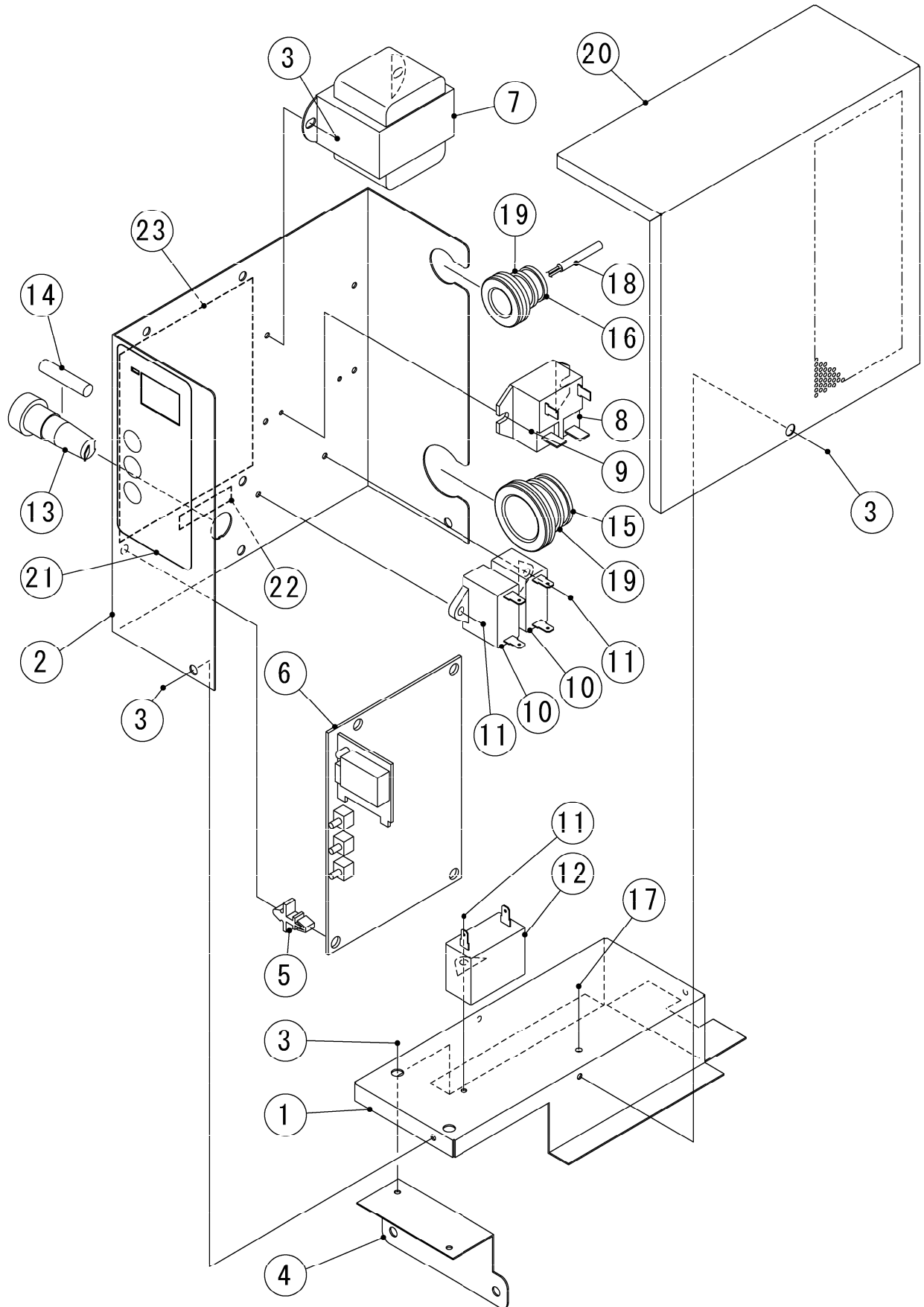




IM-65NE  
IM-65NE-25  
IM-65WNE  
IM-65WNE-25

E. CONTROL BOX ASSY

(B-1) and later



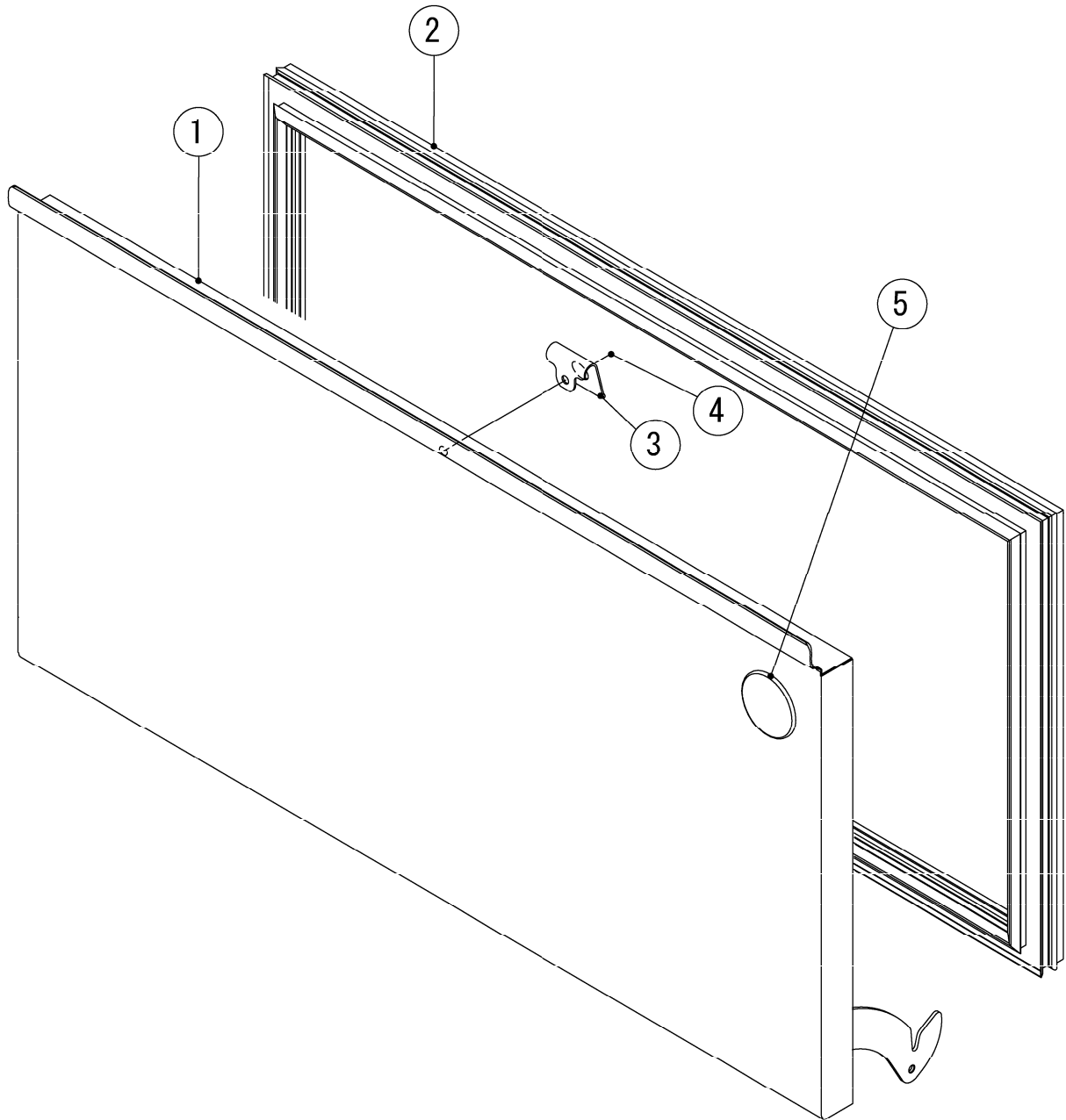
HE,GRAM

MODEL: <b>IM-65NE,IM-65NE-25 IM-65WNE,IM-65WNE-25</b>		TITLE: <b>E.CONTROL BOX ASSY</b>					
INDEX NO.	DESCRIPTION	MATERIAL OR MODEL NUMBER	PART NUMBER	REQ'D NUMBER			
				B-1			
1	CONTROL BOX (A)		3Y5611M01	1			
2	CONTROL BOX(B)		2X0438M01	1			
3	TRUSS HEAD TAPPING SCREW T2		FT20408F0	8			
4	PLATE - BOX		4Y7215M01	1			
5	BOARD SUPPORT		414929-02	4			
6	CONTROLLER BOARD		P01873-01	1			
7	TRANSFORMER		P02714-01	1			
8	POWER RELAY		P02203-02	1			
9	TRUSS HEAD TAPPING SCREW T2		FT20308F0	2			
10	CAPACITOR		P01870-01	2			
11	TRUSS HEAD TAPPING SCREW T2		FT20410F0	3			
12	CONDENSER		P02158-01	1			
13	FUSE HOLDER		P00014-01	1			
14	FUSE		P01876-01	1			
15	GROMMET		4H2568-01	1			
16	GROMMET		4H2568-02	1			
17	TRUSS HEAD MACHINE SCREW		FST0408S0	1			
18	THERMISTOR - CUBE COTROL		P00350-03	1			
19	TIE	CV-150	7920-0003	2			
20	CONTROL BOX COVER		3Y5612M01	1			
21	CONTROL LABEL		475642L01	1			
22	LABEL - FUSE		466798-01	1			
23	WIRING LABEL		3Y5648L01	1			

IM-65NE  
IM-65NE-25  
IM-65WNE  
IM-65WNE-25

F. DOOR ASSY

(B-1) and later



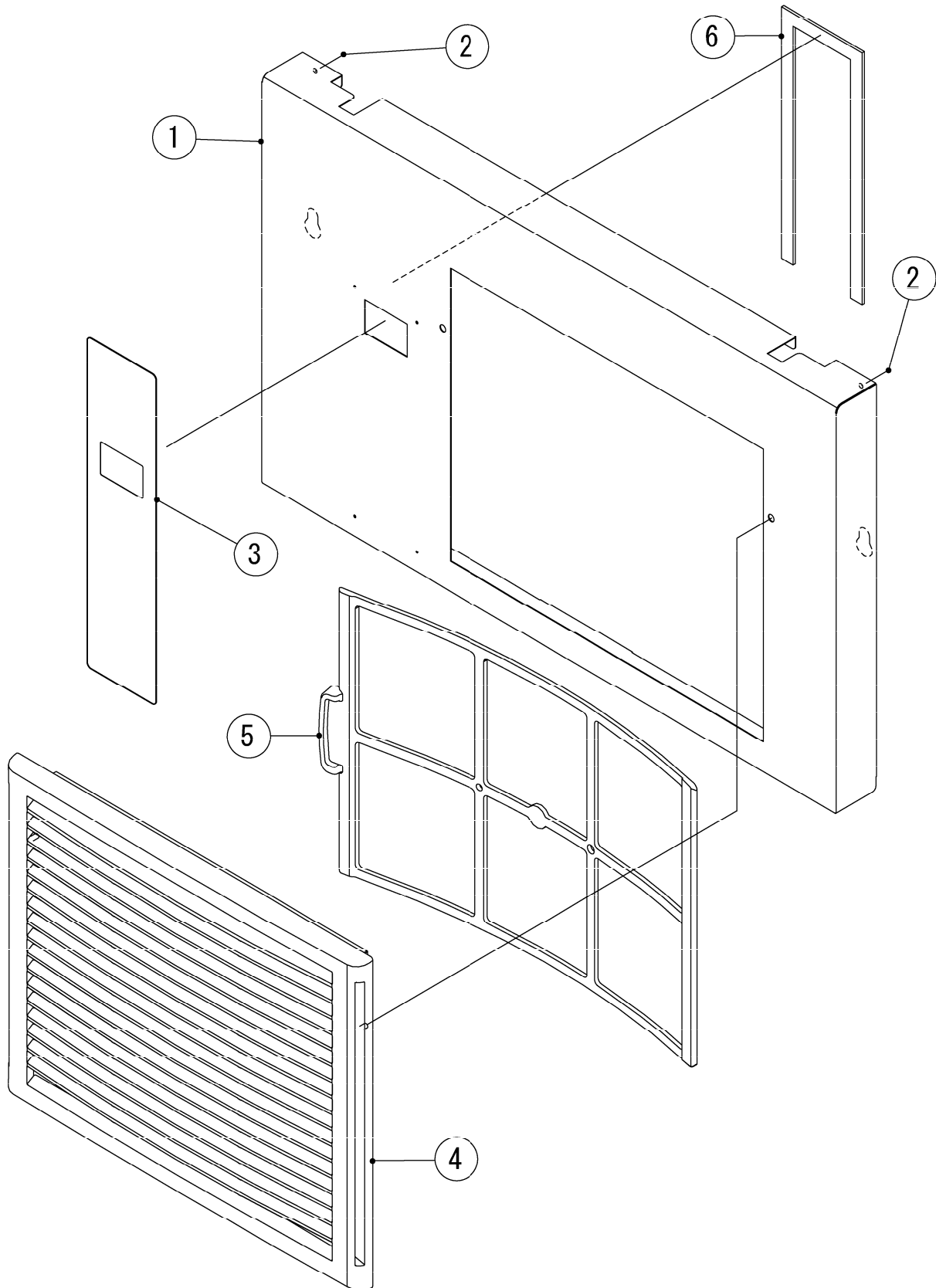
HE,GRAM

MODEL: <b>IM-65NE,IM-65NE-25</b> <b>IM-65WNE,IM-65WNE-25</b>					TITLE: <b>F.DOOR ASSY</b>			
INDEX NO.	DESCRIPTION	MATERIAL OR MODEL NUMBER	PART NUMBER	REQ'D NUMBER				
				B-1				
1	DOOR - INSULATION	(HE) Including No. 5,6	2X0466G02	1				
		(GRAM)	2X0466001	1				
2	DOOR GASKET		3Y6199P03	1				
3	CATCH - SLOPE		4X7644-01	1				
4	TRUSS HEAD TAPPING SCREW T2		FT20408M0	1				
5	LABEL - PENGUIN	(HE)	471486L01	1				

IM-65NE  
IM-65NE-25  
IM-65WNE  
IM-65WNE-25

G. FRONT PANEL LOWER ASSY

(B-1) and later



HE,GRAM

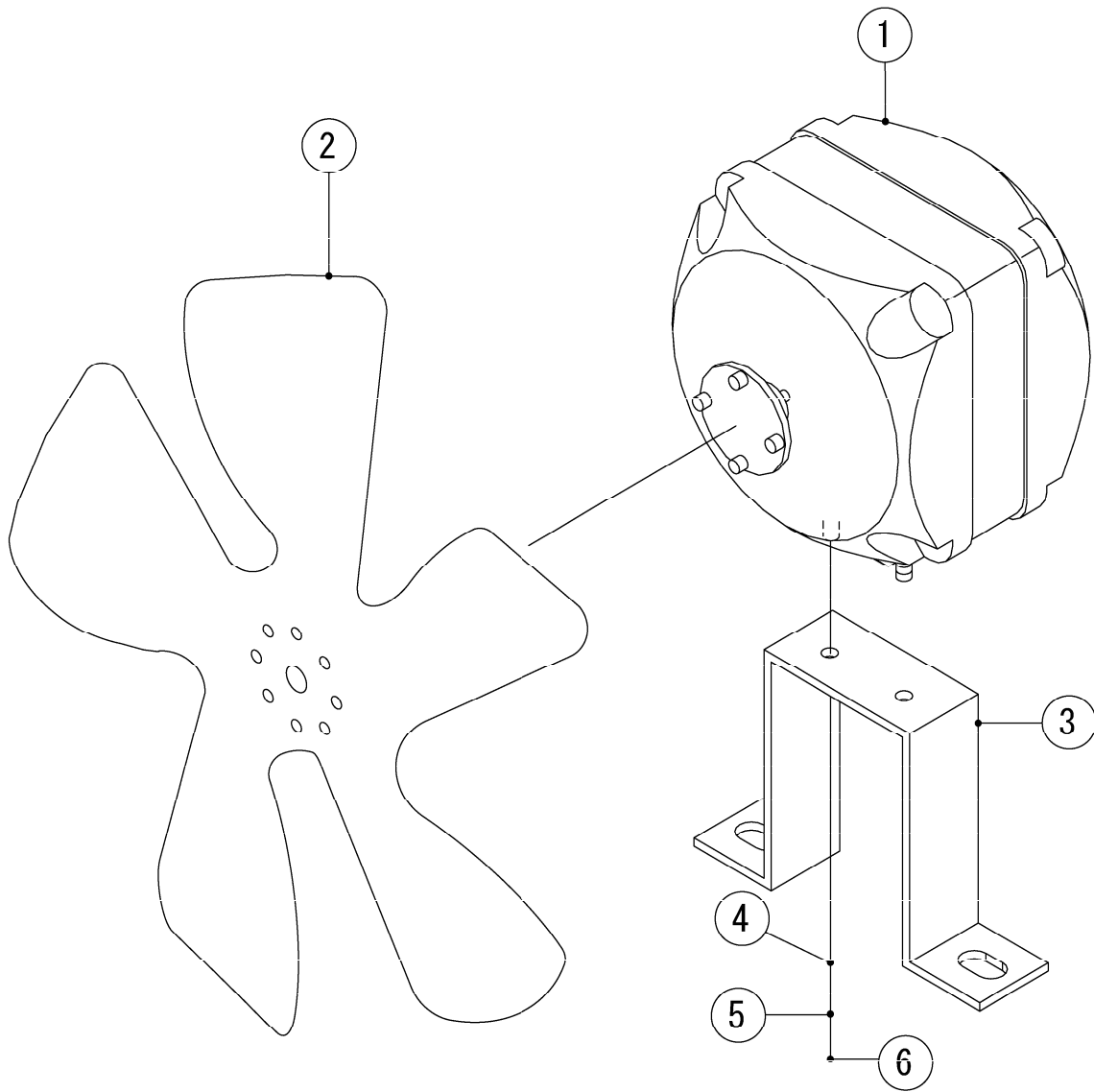
<b>MODEL: IM-65NE,IM-65NE-25 IM-65WNE,IM-65WNE-25</b>				<b>TITLE:G.FRONT PANEL LOWER ASSY</b>			
---	--	--	--	---------------------------------------	--	--	--

INDEX NO.	DESCRIPTION	MATERIAL OR MODEL NUMBER	PART NUMBER	REQ'D NUMBER			
				B-1			
1	FRONT PANEL(LO)		2X0440M02	1			
2	RIVET	SSD42SSBS(t1.6~3.2)	7170-0002	2			
3	OPERATION LABEL		375116L03	1			
4	LOUVER		1H4811P01	1			
5	AIR FILTER		2X0416G01	1			
6	SPONGE TAPE		3Y5555Z01	1			

IM-65NE  
IM-65NE-25  
IM-65WNE  
IM-65WNE-25

H. FAN MOTOR ASSY

(B-1) and later



HE,GRAM

MODEL: **IM-65NE,IM-65NE-25**  
**IM-65WNE,IM-65WNE-25** TITLE:**H.FAN MOTOR ASSY**

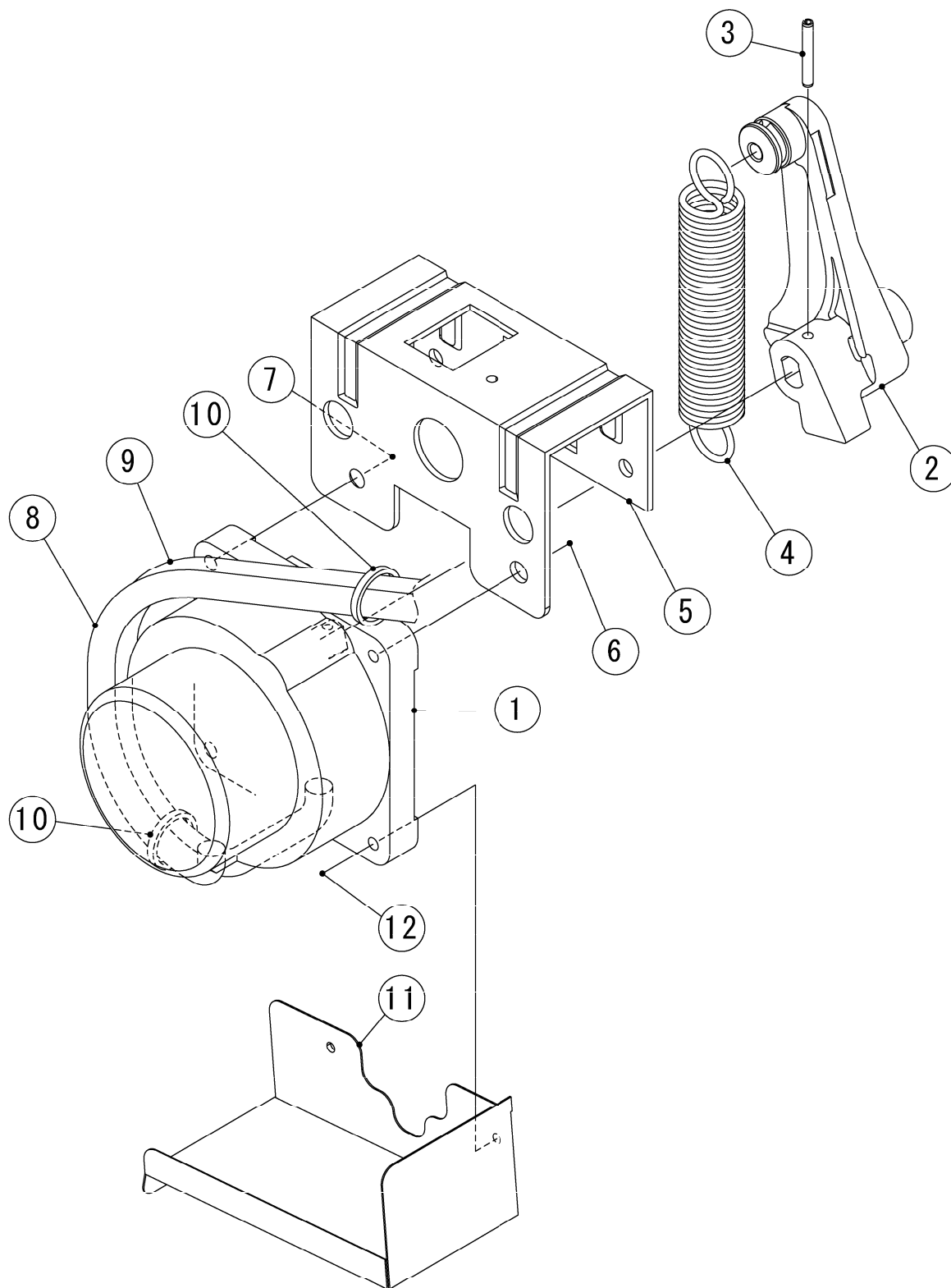
INDEX NO.	DESCRIPTION	MATERIAL OR MODEL NUMBER	PART NUMBER	REQ'D NUMBER			
				B-1			
1	FAN MOTOR		P00022-01	1			
2	FAN		451771-01	1			
3	BRACKET - FM		451767-01	1			
4	FLAT WASHER		FWPL04S0	2			
5	SPRING WASHER		FWSP04S0	2			
6	NUT		FNH104S0	2			



IM-65NE  
IM-65NE-25  
IM-65WNE  
IM-65WNE-25

### J. ACTUATOR MOTOR ASSY

(B-1) and later

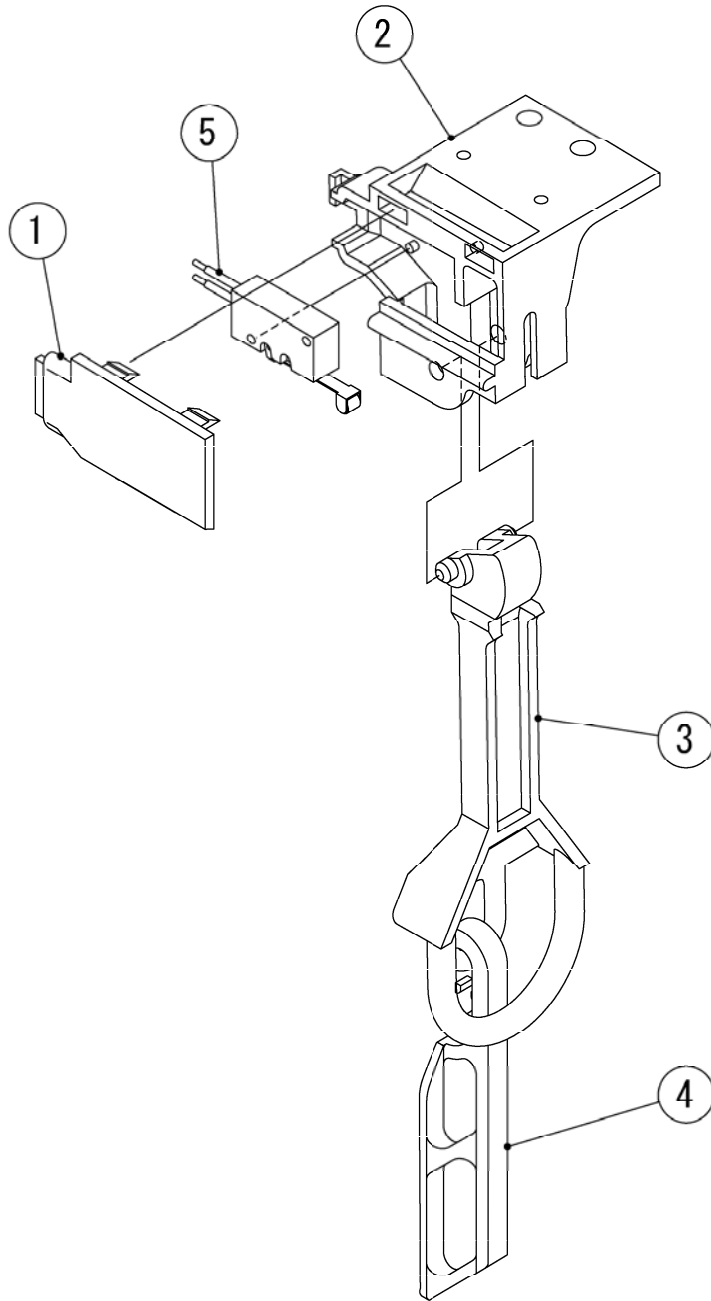




IM-65NE  
IM-65NE-25  
IM-65WNE  
IM-65WNE-25

K. BIN CONTROL SWITCH

(B-1) and later

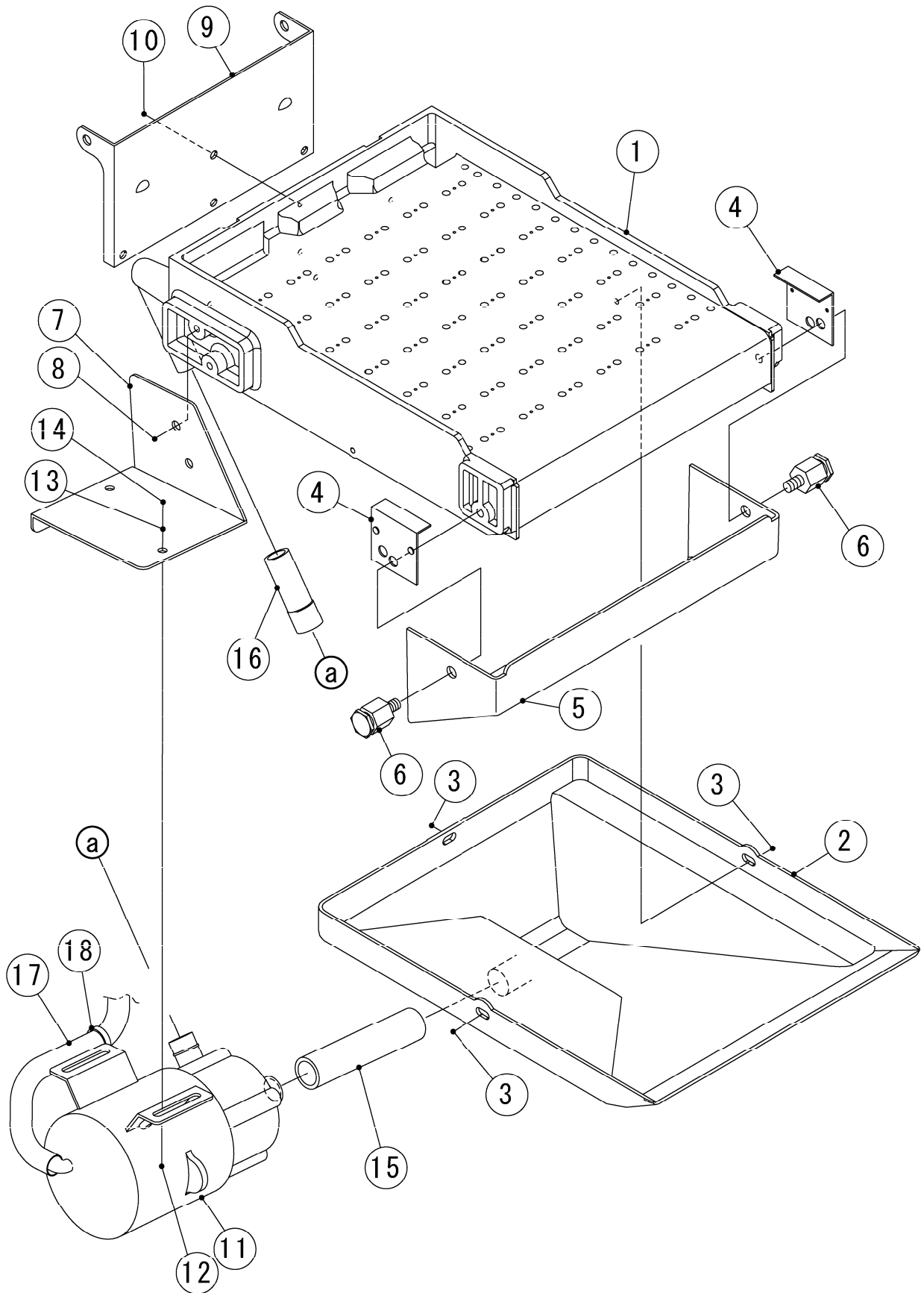




IM-65NE  
IM-65NE-25  
IM-65WNE  
IM-65WNE-25

L. WATER PAN ASSY

(B-1) and later





IM-65NE  
IM-65NE-25  
IM-65WNE  
IM-65WNE-25

M. ACCESSORIES

(B-1) and later

